



COUNTY OF LOS ANGELES  
**REGISTRAR-RECORDER/COUNTY CLERK**  
MEMORANDUM

December 30, 2003

TO: Each Supervisor

FROM: Conny B. McCormack Registrar-Recorder/County Clerk

SUBJECT: **TOUCHSCREEN EARLY VOTING LOCATIONS FINALIZED**

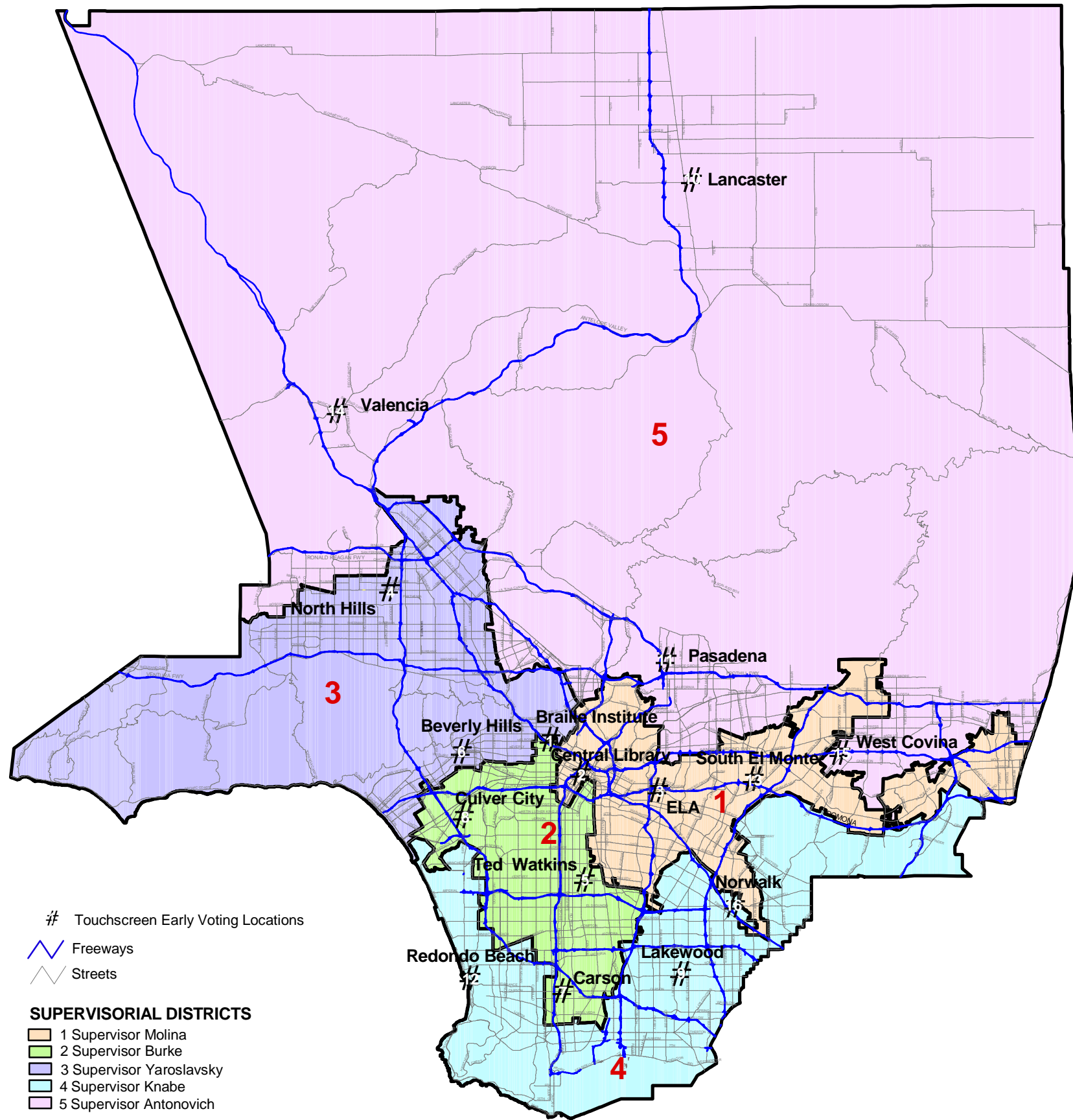
Sixteen (16) Touchscreen Early Voting Sites have been selected for the 2004 March Presidential Primary Election. The early voting period will begin on February 18 and run through February 27, 2004 at 15 locations. Early voting will continue through election day, Tuesday March 2<sup>nd</sup> at the 16<sup>th</sup> site, the RR/CC Headquarters in Norwalk. We have garnered a wealth of information on the types of sites that work best for voters and are pleased to report that all of the facilities selected meet or *exceed* the requirements determined necessary based on prior experience and the ability to accommodate tens of thousands of early voters.

We have been successful in providing more uniform coverage of the county as can be seen on the attached county map. Each district has a minimum of three locations that are large enough to serve the maximum number of voters we experienced on the busiest day during the October Special Election.

We have placed early voting sites in predominantly county owned facilities, as they are more cost effective for the county (ISD cost to establish T1 communication in a county facility is \$1,500 versus \$4,500 for a T1 line in a non-county site) and more reliable for the voting public. County owned facilities consistently provide sufficient parking, disabled access and are enthusiastically supported by our county partners. Most importantly, they can be established as permanent locations for future elections and provide a consistent and recognizable location for all voters. We plan to use these sites in future elections with minimal changes.

In closing, I want to thank our Community Voter Outreach Committee (CVOC) partners who brought to our attention some excellent facilities, which we were able to secure. I also want to thank each of your deputies for their knowledgeable assistance and valuable contact information, without which such a comprehensive location search in each district would not have been possible.

Attachment  
CMC: sr



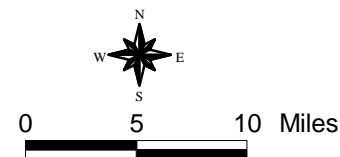
# Touchscreen Early Voting Locations

Freeways

Streets

**SUPERVISORIAL DISTRICTS**

- 1 Supervisor Molina
- 2 Supervisor Burke
- 3 Supervisor Yaroslavsky
- 4 Supervisor Knabe
- 5 Supervisor Antonovich



Data contained in this map is reproduced in whole or part from the Thomas Brothers Maps Digital Database. This map is copyrighted and reproduced with permission granted by Thomas Brothers Maps. All rights Reserved.



**2004 PRESIDENTIAL PRIMARY ELECTION  
EARLY VOTING LOCATIONS  
February 18 - 27, 2004**

**LOS ANGELES**

- |   |  |
|---|--|
| <p><b>1. BRAILLE INSTITUTE</b><br/>Weingart North<br/>741 North Vermont Avenue<br/>Daily 8:30am - 4:30pm</p> <p><b>2. CENTRAL LIBRARY</b><br/>630 West 5th Street<br/>Meeting Room A<br/>Mon - Thurs 11am - 7pm<br/>Fri &amp; Sat 10am - 5pm<br/>Sun 1pm - 4:30pm</p> <p><b>3. EAST LOS ANGELES</b><br/>County Regional Library<br/>Community Room<br/>4801 East 3rd Street<br/>Mon - Thurs 11am - 7pm<br/>Fri &amp; Sat 10am - 5pm<br/>Sun 1pm - 4:30pm</p> <p><b>4. NORTH HILLS</b><br/>Mid - Valley Regional Library<br/>Community Room<br/>16244 Nordhoff Street<br/>Mon - Thurs 11am - 7pm<br/>Fri &amp; Sat 10am - 5pm<br/>Sun 1pm - 4:30pm</p> <p><b>5. TED WATKINS COUNTY PARK</b><br/>Annex Room - 102nd and Success<br/>1335 East 103rd Street<br/>Los Angeles<br/>Daily 8:30am - 4:30pm</p> <p><b>6. BEVERLY HILLS</b><br/>City Hall<br/>Room G30C<br/>455 North Rexford Drive<br/>Daily 8:30am - 4:30pm</p> <p><b>7. CARSON</b><br/>County Regional Library<br/>Community Room<br/>151 East Carson<br/>Mon - Thurs 11am - 7pm<br/>Fri &amp; Sat 10am - 5pm<br/>Sun 1pm - 4:30pm</p> | <p><b>8. CULVER CITY</b><br/>County Regional Library<br/>Community Room<br/>4975 Overland Avenue<br/>Mon - Thurs 11am - 7pm<br/>Fri &amp; Sat 10am - 5pm<br/>Sun 1pm - 4:30pm</p> <p><b>9. LAKEWOOD</b><br/>County Regional Library<br/>Community Room<br/>4990 Clark Avenue<br/>Mon - Thurs 11am - 7pm<br/>Fri &amp; Sat 10am - 5pm<br/>Sun 1pm - 4:30pm</p> <p><b>10. LANCASTER</b><br/>North County<br/>Fire Training Center<br/>Room 67<br/>42110 6th Street West<br/>Daily 8:30am - 4:30pm</p> <p><b>11. PASADENA</b><br/>Jackie Robinson Center<br/>1020 North Fair Oaks Avenue<br/>Daily 8:30am - 4:30pm</p> <p><b>12. REDONDO BEACH</b><br/>Public Library<br/>2nd Floor Conference Room<br/>303 N. Pacific Coast Hwy<br/>Mon - Thurs 11am - 7pm<br/>Fri &amp; Sat 10am - 5pm<br/>Sun 1pm - 4:30pm</p> <p><b>13. SOUTH EL MONTE</b><br/>San Gabriel Valley Service Center<br/>1441 Santa Anita Avenue<br/>Daily 8:30am - 4:30pm</p> <p><b>14. VALENCIA</b><br/>County Regional Library<br/>Community Room<br/>23743 W. Valencia Blvd<br/>Mon - Thurs 11am - 7pm<br/>Fri &amp; Sat 10am - 5pm<br/>Sun 1pm - 4:30pm</p> <p><b>15. WEST COVINA</b><br/>County Regional Library<br/>Community Room<br/>1601 West Covina Parkway<br/>Mon - Thurs 11am - 7pm<br/>Fri &amp; Sat 10am - 5pm<br/>Sun 1pm - 4:30pm</p> |
|---|--|

**16. NORWALK REGISTRAR/ RECORDER-COUNTY CLERK**

3rd Floor - Room 3002  
12400 Imperial Highway  
February 18th through March 1st  
Daily 8:30am - 4:30pm

*\* March 2nd - Election Day 7am - 8pm*