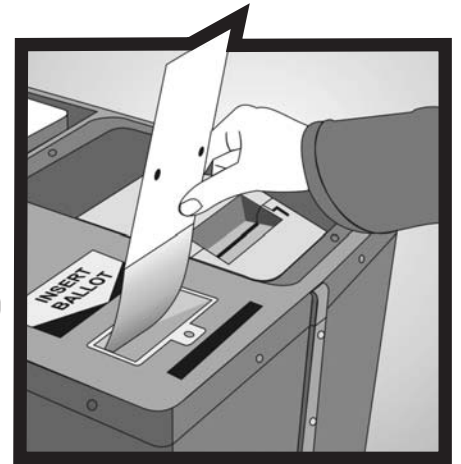
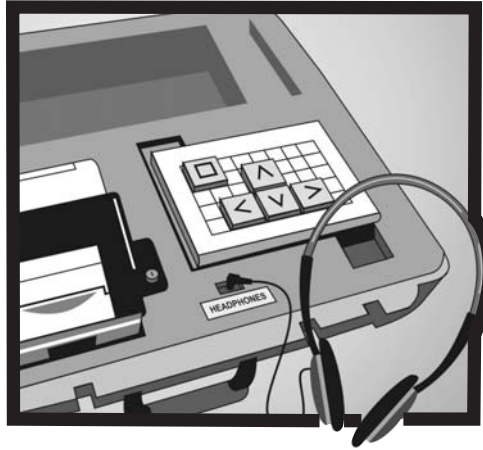




ELECTION TRAINING CLASS SCHEDULE



CLERKS Only

November 8, 2011

Local and Municipal Consolidated Elections



Los Angeles County REGISTRAR-RECORDER/COUNTY CLERK



Los Angeles County REGISTRAR-RECORDER/COUNTY CLERK

DEAN C. LOGAN
Registrar-Recorder/County Clerk

Dear Pollworker:

The Los Angeles County Registrar Recorder/County Clerk would like to thank you for your participation in volunteering as a Pollworker for the November 8, 2011 Local and Municipal Consolidated Elections. Your involvement greatly contributes to conducting successful elections for the citizens of Los Angeles County.

This booklet contains the schedule of Clerk training classes for the November 8, 2011 Local and Municipal Consolidated Elections. The classes listed are for **Clerks only**. Inspectors will be mailed a separate schedule that lists locations and times for Inspector classes.

To assist you in selecting the most convenient class for you to attend, the schedule is arranged by:

- The dates the classes will be held throughout the County.
- Alphabetical order of cities and communities (refer to alphabetical listing on page 3)

Please note that reservations for training classes are not required.

Remember, attending Pollworker training is important. Although Clerks are not required to attend training, it is highly recommended that you attend a class in preparation for your Election Day assignment. Additionally, you will receive a \$25 stipend for attending a training class.

Please remember to bring your attendance slip when attending training and turn it in at the end of the class so that you may receive credit for attending. Your attendance slip is located at the bottom of your Appointment Letter. Any questions regarding your appointment should be directed to the Polls Section (*refer to the phone number on your Appointment Letter*).

In an effort to accommodate Pollworkers, we try to schedule trainings throughout Los Angeles County; therefore, we hope you find a convenient location for you to attend. Once again, we thank you for your dedication and we look forward to seeing you in training class.

Sincerely,
BLANCA CASARRUBIAS
Training Director

What's Inside

Important Information... *Page 2*

Table of Contents for Locations... *Pages 3-5*

Class Schedule Details... *Page 6*

Summary of Duties... *Page 21*

Telephone Directory... *Page 22*

Questions/Contact Page... *Back Page*

IMPORTANT INFORMATION

This booklet contains the classes for **CLERKS only**.



Please **be on time** to avoid disrupting class and to assure you do not miss any important information. Instructors will direct you to another class if you are late.

Attendance slips will be collected at the end of the class. Please schedule your time so you may stay till the end of class. **You will not receive credit for attending a class if you leave early.**

- RESERVATIONS are neither required nor accepted.
- You may attend a class at any location.
- You may attend as many classes as you like. However, you will only be compensated for one class.

- Parking fees are the responsibility of the Pollworker.
- All locations are wheelchair accessible, unless otherwise noted.
- Please see Index listing for locations that will have a Language Interpreter.



You will need to turn in the attendance slip located at the bottom of your appointment letter when you attend class.

**Avoid the crowd...
First two weeks are best!!**

Table of Contents

LOCATION	Page	Quick Date Reference
AGOURA HILLS	14	Oct 27 (Thurs)
ALTADENA	15	Oct 30 (Sun)
ARTESIA	11	Oct 24 (Mon)
AZUSA	6	Oct 11 (Tues)
BALDWIN PARK	15	Oct 29 (Sat)
BELL GARDENS	19	Nov 4 (Fri)
BEVERLY HILLS	20	Nov 6 (Sun)
CALABASAS	9	Oct 18 (Tues)
CERRITOS	17	Nov 2 (Wed)
CITY OF INDUSTRY	10	Oct 20 (Thurs)
CLAREMONT	18	Nov 3 (Thurs)
COMPTON	7	Oct 14 (Fri)
COMPTON	13	Oct 26 (Wed)
COVINA	14	Oct 28 (Fri)
CULVER CITY	7	Oct 13 (Thurs)
CULVER CITY	14	Oct 27 (Thurs)
DIAMOND BAR	17	Nov 2 (Wed)
DUARTE	9	Oct 19 (Wed)
EL MONTE	16	Oct 31 (Mon)
EL SEGUNDO	13	Oct 26 (Wed)
GLENDORA	8	Oct 17 (Mon)
GLENDORA	12	Oct 24 (Mon)
HAWAIIAN GARDENS	6	Oct 11 (Tues)
HAWTHORNE	19	Nov 4 (Fri)
HERMOSA BEACH	14	Oct 28 (Fri)
INGLEWOOD	6	Oct 12 (Wed)
INGLEWOOD	18	Nov 2 (Wed)
LA CANADA (FLINTRIDGE)	16	Oct 31 (Mon)
LA PUENTE	11	Oct 23 (Sun)
LANCASTER	7	Oct 14 (Fri)

Table of Contents

LOCATION	Page	Quick Date Reference
LYNWOOD.....	18	Nov 3 (Thurs)
MANHATTAN BEACH.....	16	Nov 1 (Tues)
MAYWOOD	9	Oct 19 (Wed)
MONTEBELLO	12	Oct 25 (Tues)
NORWALK	20	Nov 6 (Sun)
PALMDALE	17	Nov 1 (Tues)
PARAMOUNT	19	Nov 5 (Sat)
PASADENA.....	20	Nov 5 (Sat)
PICO RIVERA	8	Oct 15 (Sat)
PICO RIVERA	12	Oct 25 (Tues)
POMONA	10	Oct 20 (Thurs)
POMONA	19	Nov 4 (Fri)
ROLLING HILLS ESTATES	8	Oct 17 (Mon)
ROSEMEAD.....	7	Oct 14 (Fri)
ROSEMEAD.....	13	Oct 25 (Tues)
ROWLAND HEIGHTS	11	Oct 22 (Sat)
SAN DIMAS.....	20	Nov 6 (Sun)
SANTA CLARITA	11	Oct 21 (Fri)
SANTA CLARITA	15	Oct 28 (Fri)
SANTA FE SPRINGS.....	10	Oct 21 (Fri)
SOUTH PASADENA	6	Oct 12 (Wed)
SOUTH PASADENA	13	Oct 26 (Wed)
TEMPLE CITY	8	Oct 17 (Mon)
TORRANCE	12	Oct 24 (Mon)
TORRANCE	18	Nov 3 (Thurs)
WALNUT	15	Oct 30 (Sun)
WEST COVINA	10	Oct 20 (Thurs)
WEST COVINA	16	Oct 31 (Mon)
WHITTIER	9	Oct 18 (Tues)
WHITTIER	17	Nov 1 (Tues)

Table of Contents

LOCATION **Page** **Quick Date Reference**

LANGUAGE INTERPRETATION

CHINESE

MONTEBELLO 12 Oct 25 (Tues)

JAPANESE

HAWTHORNE 19 Nov 4 (Fri)

KOREAN

TORRANCE 12 Oct 24 (Mon)

SPANISH

NORWALK 20 Nov 6 (Sun)

TAGALOG

WEST COVINA 16 Oct 31 (Mon)

VIETNAMESE

ROSEMEAD 13 Oct 25 (Tues)

Note: Classes are presented in English with an interpreter on-site to answer questions as needed.

City/Address	Date/Time
--------------	-----------

If you are late, you will not be admitted.

AZUSA

October 11 (Tuesday)

Valleydale Park
 5525 North Lark Ellen Avenue
 (Between Gladstone St. and East
 Arrow Hwy.)
 Zip: 91702

11:00 a.m. to 1:00 p.m.

Note: Class will be held in the Auditorium. **Please DO NOT CALL FACILITY. Refer to the numbers on the back of schedule.**

HAWAIIAN GARDENS

October 11 (Tuesday)

C. Robert Lee Activity Center
 21815 Pioneer Boulevard
 (Between Carson St. and 221st St.)
 Zip: 90716

11:00 a.m. to 1:00 p.m.

Note: Class will be held in Meeting Room B at the south end of the Senior Center Building. **Please DO NOT CALL FACILITY. Refer to the numbers on the back of schedule.**

INGLEWOOD

October 12 (Wednesday)

Darby Park
 3400 Arbor Vitae Street
 (West of Crenshaw Blvd. and South of
 90th St.)
 Zip: 90305

10:00 a.m. to 12:00 p.m.
 3:30 p.m. to 5:30 p.m.

Note: Classes will be held in the Gymnasium. Please, no heels on gym floor. Additional parking available on West 90th St. **Please DO NOT CALL FACILITY. Refer to the numbers on the back of schedule.**

SOUTH PASADENA

October 12 (Wednesday)

South Pasadena Library
 1115 El Centro Street
 (Between Fremont Ave. and Diamond
 Ave.)
 Zip: 91030

10:00 a.m. to 12:00 p.m.
 3:30 p.m. to 5:30 p.m.

Note: Classes will be held in the Community Room. It is the building north of library. Please be quiet in the mezzanine area and hallway between restrooms. "This activity is not sponsored by the City of South Pasadena or the South Pasadena Public Library." **Please DO NOT CALL FACILITY. Refer to the numbers on the back of schedule.**

City/Address	Date/Time
--------------	-----------

If you are late, you will not be admitted.

CULVER CITY

October 13 (Thursday)

Culver Palms United Methodist Church
 4464 Sepulveda Boulevard
 (Between Braddock Dr. and Franklin Ave.)
 Zip: 90230

10:00 a.m. to 12:00 p.m.

Note: Classes will be held in the Fellowship Hall. Limited parking is available behind church and there is metered parking on the street . Please do not park in lot in front of the Church or the YMCA Parking lot. **Please DO NOT CALL FACILITY. Refer to the numbers on the back of schedule.**

COMPTON

October 14 (Friday)

Saint Albert the Great Catholic Church
 804 East Compton Boulevard
 (Between Santa Fe Ave. and South Long Beach Blvd.)
 Zip: 90220

10:00 a.m. to 12:00 p.m.
 4:00 p.m. to 6:00 p.m.

Note: Classes will be held in the Small Hall. **Please DO NOT CALL FACILITY. Refer to the numbers on the back of schedule.**

LANCASTER

October 14 (Friday)

Valley View Church of the Nazarene
 42338 30th Street West
 (Between Avenue L and Avenue M)
 Zip: 93536

10:00 a.m. to 12:00 p.m.
 4:00 p.m. to 6:00 p.m.

Note: Classes will be held in the Sanctuary. **Please DO NOT CALL FACILITY. Refer to the numbers on the back of schedule.**

ROSEMEAD

October 14 (Friday)

Rosemead Evergreen Baptist Church
 1255 San Gabriel Boulevard
 (Between Paramount Blvd. and Rose Glen Ave.)
 Zip: 91770

10:00 a.m. to 12:00 p.m.

Note: Class will be held in the Fellowship Hall. **Please DO NOT CALL FACILITY. Refer to the numbers on the back of schedule.**

City/Address	Date/Time
--------------	-----------

If you are late, you will not be admitted.

PICO RIVERA	October 15 (Saturday)
--------------------	------------------------------

Pico Rivera Peace Lutheran Church
 9412 Shade Lane
 (Intersects Passons Blvd. between
 Slauson Ave. and Telegraph Rd.)
 Zip: 90660

10:00 a.m. to 12:00 p.m.
 4:00 p.m. to 6:00 p.m.

Note: Class will be held in the Parish Hall. **Please DO NOT CALL FACILITY. Refer to the numbers on the back of schedule.**

GLENDORA	October 17 (Monday)
-----------------	----------------------------

Glendora Public Library
 140 South Glendora Avenue
 (Between Carroll Ave. and East Foothill
 Blvd.)
 Zip 91741

1:30 p.m. to 3:30 p.m.

Note: Class will be held in the Bidwell Forum Room on the 2nd floor. **Please DO NOT CALL FACILITY. Refer to the numbers on the back of schedule.**

ROLLING HILLS ESTATES	October 17 (Monday)
------------------------------	----------------------------

Peninsula Center Library
 701 Silver Spur Road
 (Between Crenshaw Blvd. and Hawthorne
 Blvd.)
 Zip: 90274

1:30 p.m. to 3:30 p.m.

Note: Class will be held in the Community Room, 2nd floor. Parking is located on the roof of the library and the second floor garage for underground parking. Please do not park in nearby shopping area. **Please DO NOT CALL FACILITY. Refer to the numbers on the back of schedule.**

TEMPLE CITY	October 17 (Monday)
--------------------	----------------------------

Community of Christ Church
 9468 Broadway
 (Between Temple City Blvd. and Baldwin
 Ave.)
 Zip: 91780

1:30 p.m. to 3:30 p.m.

Note: Class will be held in the Fellowship Hall. **Please DO NOT CALL FACILITY. Refer to the numbers on the back of schedule.**

City/Address	Date/Time
--------------	-----------

If you are late, you will not be admitted.

CALABASAS

October 18 (Tuesday)

Church in the Canyon
 4235 Las Virgenes Road
 (South of the 101 Freeway and East of
 Lost Hills Rd.)
 Zip: 91302

11:00 a.m. to 1:00 p.m.

Note: Class will be held in the Fellowship Hall. **Please DO NOT CALL FACILITY. Refer to the numbers on the back of schedule.**

WHITTIER

October 18 (Tuesday)

East Whittier United Methodist Church
 10005 South Cole Road
 (Between Lambert Rd. and Whittier
 Blvd.)
 Zip: 90603

10:00 a.m. to 12:00 p.m.
 4:00 p.m. to 6:00 p.m.

Note: Classes will be held in the Fellowship Hall. **Please DO NOT CALL FACILITY. Refer to the numbers on the back of schedule.**

DUARTE

October 19 (Wednesday)

Duarte Community Center
 1600 East Huntington Drive
 (Between Buena Vista St. and Highland
 Ave.)
 Zip: 91010

12:30 p.m. to 2:30 p.m.
 6:00 p.m. to 8:00 p.m.

Note: Classes will be held in the Community Center. Street parking only. **Please DO NOT CALL FACILITY. Refer to the numbers on the back of schedule.**

MAYWOOD

October 19 (Wednesday)

United Steel Workers #9518
 4735 Slauson Avenue
 (Between Atlantic Blvd. and 710 Frwy.)
 Zip: 90270

10:00 a.m. to 12:00 p.m.
 4:00 p.m. to 6:00 p.m.

Note: Class will be held in the Hall. **Please DO NOT CALL FACILITY. Refer to the numbers on the back of schedule.**

City/Address	Date/Time
--------------	-----------

If you are late, you will not be admitted.

CITY OF INDUSTRY

October 20 (Thursday)

Veterans of Foreign Wars Post #1944
 16157 Gale Avenue
 (Between Stimson Ave. and Azusa Ave.)
 Zip: 91745

10:00 a.m. to 12:00 p.m.
 3:30 p.m. to 5:30 p.m.

Note: Class will be held in the Martin Room. **Please DO NOT CALL FACILITY. Refer to the numbers on the back of schedule.**

POMONA

October 20 (Thursday)

Shield of Faith Christian Center
 1750 West Holt Avenue
 (Between Erie St. and Union Ave.)
 Zip: 91768

10:00 a.m. to 12:00 p.m.

Note: Classes will be held in the Fellowship Hall. **Please DO NOT CALL FACILITY. Refer to the numbers on the back of schedule.**

WEST COVINA

October 20 (Thursday)

American Legion Post 790
 330 North Azusa Avenue
 (Between Workman Ave. and Puente Ave.)
 Zip: 91791

1:00 p.m. to 3:00 p.m.
 6:30 p.m. to 8:30 p.m.

Note: Classes will be held in the Banquet Hall. **Please DO NOT CALL FACILITY. Refer to the numbers on the back of schedule.**

SANTA FE SPRINGS

October 21 (Friday)

City of Santa Fe Springs-Town Center Hall
 11740 Telegraph Road
 (Between Pioneer Blvd. and Orr & Day Rd.)
 Zip: 90670

1:30 p.m. to 3:30 p.m.

Note: Class will be held in the Social Hall. **Please DO NOT CALL FACILITY. Refer to the numbers on the back of schedule.**

City/Address	Date/Time
--------------	-----------

If you are late, you will not be admitted.

SANTA CLARITA

October 21 (Friday)

Saint Stephen's Episcopal Church
 24901 Orchard Village Road
 (Between Wiley Canyon Rd. and Lyons Ave.)
 Zip: 91355

11:00 a.m. to 1:00 p.m.

Note: Class will be held in Spurling Hall. **Please DO NOT CALL FACILITY. Refer to the numbers on the back of schedule.**

ROWLAND HEIGHTS

October 22 (Saturday)

Calvary Church of Eastwood
 2103 Baston Avenue
 (Between Crosshaven Dr. and Sordello St.)
 Zip: 91748

10:00 a.m. to 12:00 p.m.
 4:00 p.m. to 6:00 p.m.

Note: Classes will be held in the Fellowship Hall. **Please DO NOT CALL FACILITY. Refer to the numbers on the back of schedule.**

LA PUENTE

October 23 (Sunday)

Bassett Park
 510 Vineland Avenue
 (Between Nelson Ave. and Baldwin Park Blvd.)
 Zip: 91746

11:00 a.m. to 1:00 p.m.

Note: Class will be held in the downstairs gymnasium. **Please DO NOT CALL FACILITY. Refer to the numbers on the back of schedule.**

ARTESIA

October 24 (Monday)

AJ Padelford Park
 11870 169th Street
 (Between Clarkdale and Elaine Avenue)
 Zip: 90701

10:00 a.m. to 12:00 p.m.
 4:00 p.m. to 6:00 p.m.

Note: Classes will be held in the All Purpose Room. **Please DO NOT CALL FACILITY. Refer to the numbers on the back of schedule.**

City/Address	Date/Time
--------------	-----------

If you are late, you will not be admitted.

GLENDORA	October 24 (Monday)
-----------------	----------------------------

Glendora Public Library
 140 South Glendora Avenue
 (Between Carroll Ave. and East Foothill Blvd.)
 Zip: 91741

10:00 a.m. to 12:00 p.m.

Note: Class will be held in the Bidwell Forum Room on the 2nd floor. **Please DO NOT CALL FACILITY. Refer to the numbers on the back of schedule.**

TORRANCE	October 24 (Monday)
-----------------	----------------------------

Torrance First Presbyterian Church
 1900 Crenshaw Boulevard
 (Between West Carson St. and Jefferson St.)
 Zip: 90501

10:00 a.m. to 12:00 p.m.
 3:30 p.m. to 5:30 p.m. *-with Korean interpreter*

Note: Classes will be held in the Fellowship Hall. Enter parking lot from Jefferson St. **Please DO NOT CALL FACILITY. Refer to the numbers on the back of schedule.**

MONTEBELLO	October 25 (Tuesday)
-------------------	-----------------------------

The American Legion Post #272
 616 West Cleveland Avenue
 (Between Montebello Blvd. and Poplar Ave.)
 Zip: 90640

10:00 a.m. to 12:00 p.m.
 4:00 p.m. to 6:00 p.m. *-with Chinese interpreter*

Note: Classes will be held in the American Legion Hall. **Please DO NOT CALL FACILITY. Refer to the numbers on the back of schedule.**

PICO RIVERA	October 25 (Tuesday)
--------------------	-----------------------------

Pico Rivera Peace Lutheran Church
 9412 Shade Lane
 (Intersects Passons Blvd. between Slauson Ave. and Telegraph Rd.)
 Zip: 90660

10:00 a.m. to 12:00 p.m.
 3:30 p.m. to 5:30 p.m.

Note: Classes will be held in the Parish Hall. **Please DO NOT CALL FACILITY. Refer to the numbers on the back of schedule.**

City/Address	Date/Time
--------------	-----------

If you are late, you will not be admitted.

ROSEMEAD

October 25 (Tuesday)

Rosemead Evergreen Baptist Church
1255 San Gabriel Boulevard
(Between Paramount Blvd. and Rose
Glen Ave.)
Zip: 91770

1:30 p.m. to 3:30 p.m. -with Vietnamese
interpreter

Note: Class will be held in the Fellowship Hall. **Please DO NOT CALL FACILITY. Refer to the numbers on the back of schedule.**

COMPTON

October 26 (Wednesday)

Saint Albert the Great Catholic Church
804 East Compton Boulevard
(Between Santa Fe Ave. and South
Long Beach Blvd.)
Zip: 90220

10:00 a.m. to 12:00 p.m.
3:30 p.m. to 5:30 p.m.

Note: Classes will be held in the Small Hall. **Please DO NOT CALL FACILITY. Refer to the numbers on the back of schedule.**

EL SEGUNDO

October 26 (Wednesday)

El Segundo Moose Lodge
514 West Imperial Hwy.
(Between Sepulveda Blvd. and Main
St.)
Zip: 90245

10:00 a.m. to 12:00 p.m.
3:30 p.m. to 5:30 p.m.

Note: Classes will be held in the Main Hall. **Please DO NOT CALL FACILITY. Refer to the numbers on the back of schedule.**

SOUTH PASADENA

October 26 (Wednesday)

South Pasadena Library
1115 El Centro Street
(Between Fremont Ave. and Diamond
Ave.)
Zip: 91030

1:30 p.m. to 3:30 p.m.

Note: Class will be held in the Community Room. It is the building North of Library. Please be quiet in the mezzanine area and hallway between restrooms. "This activity is not sponsored by the City of South Pasadena or the South Pasadena Public Library." **Please DO NOT CALL FACILITY. Refer to the numbers on the back of schedule.**

City/Address	Date/Time
--------------	-----------

If you are late, you will not be admitted.

AGOURA HILLS	October 27 (Thursday)
---------------------	------------------------------

Agoura Bible Fellowship 5564 Foothill Drive (Between Easterly Rd. and Lewis Ln.) Zip: 91301	10:00 a.m. to 12:00 p.m. 3:30 p.m. to 5:30 p.m.
--	--

Note: Classes will be held in the Fellowship Hall. **Please DO NOT CALL FACILITY. Refer to the numbers on the back of schedule.**

CULVER CITY	October 27 (Thursday)
--------------------	------------------------------

Culver Palms United Methodist Church 4464 Sepulveda Boulevard (Between Braddock Dr. & Franklin Ave.) Zip: 90230	1:30 p.m. to 3:30 p.m.
--	------------------------

Note: Class will be held in the Fellowship Hall. Limited parking is available behind church and there is metered parking on the street. Please do not park in lot in front of Church or the YMCA Parking lot. **Please DO NOT CALL FACILITY. Refer to the numbers on the back of schedule.**

COVINA	October 28 (Friday)
---------------	----------------------------

Covina Woman's Club 128 South San Jose Avenue (Between East Puente St. and East Badillo St.) Zip: 91723	10:00 a.m. to 12:00 p.m. 3:30 p.m. to 5:30 p.m.
--	--

Note: Classes will be held in the Banquet Room. **Please DO NOT CALL FACILITY. Refer to the numbers on the back of schedule.**

HERMOSA BEACH	October 28 (Friday)
----------------------	----------------------------

Kiwanis Club of Hermosa Beach 2515 Valley Drive (Between Gould and 25th Street.) Zip: 90254	10:00 a.m. to 12:00 p.m. 3:30 p.m. to 5:30 p.m.
--	--

Note: Classes will be held in the Banquet Hall. **Please DO NOT CALL FACILITY. Refer to the numbers on the back of schedule.**

City/Address	Date/Time
--------------	-----------

If you are late, you will not be admitted.

SANTA CLARITA

October 28 (Friday)

Saint Stephen's Episcopal Church
 24901 Orchard Village Road
 (Between Wiley Canyon Rd. and Lyons Ave.)
 Zip: 91355

11:00 a.m. to 1:00 p.m.

Note: Class will be held in Spurling Hall. ***Please DO NOT CALL FACILITY. Refer to the numbers on the back of schedule.***

BALDWIN PARK

October 29 (Saturday)

Free Will Baptist Church
 3941 Merced Avenue
 (Between Palm Ave. and Ramona Pkwy.)
 Zip: 91706

10:00 a.m. to 12:00 p.m.
 4:00 p.m. to 6:00 p.m.

Note: Classes will be held in the Assembly Hall. ***Please DO NOT CALL FACILITY. Refer to the numbers on the back of schedule.***

ALTADENA

October 30 (Sunday)

Altadena Farnsworth Park
 568 East Mount Curve Road
 (Between North Marengo Ave. and Lake Ave.)
 Zip: 91001

11:00 a.m. to 1:00 p.m.

Note: Class will be held in the Upper Davies Building, large Community Room. ***Please DO NOT CALL FACILITY. Refer to the numbers on the back of schedule.***

WALNUT

October 30 (Sunday)

Walnut Senior Center
 21215 La Puente Road
 (Between Morningside Dr. and Spur Trail Ave.)
 Zip: 91789

10:00 a.m. to 12:00 p.m.
 4:00 p.m. to 6:00 p.m.

Note: Classes will be held in the Assembly Room. No smoking allowed in the facility or within 20 feet of the exterior door. ***Please DO NOT CALL FACILITY. Refer to the numbers on the back***

City/Address	Date/Time
--------------	-----------

If you are late, you will not be admitted.

EL MONTE

October 31 (Monday)

Lambert Park
 11431 McGirk Avenue
 (Between North Peck Rd. and Cedar Ave.)
 Zip: 91731

10:00 a.m. to 12:00 p.m.
 3:30 p.m. to 5:30 p.m.

Note: Classes will be held in the Auditorium. **Please DO NOT CALL FACILITY. Refer to the numbers on the back of schedule.**

LA CAÑADA FLINTRIDGE

October 31 (Monday)

La Cañada Presbyterian Church
 626 Foothill Boulevard
 (Between Oakwood Ave. and Woodleigh Ln.)
 Zip: 91011

1:30 p.m. to 3:30 p.m.

Note: Class will be held in the Fellowship Hall. **Please DO NOT CALL FACILITY. Refer to the numbers on the back of schedule.**

WEST COVINA

October 31 (Monday)

West Covina Elk's Lodge #1996
 841 West Merced Avenue
 (Between South Glendora Ave. and California Ave.)
 Zip: 91790

10:00 a.m. to 12:00 p.m.
 3:30 p.m. to 5:30 p.m. -with Tagalog interpreter

Note: Classes will be held in the Lodge Hall. **Please DO NOT CALL FACILITY. Refer to the numbers on the back of schedule.**

MANHATTAN BEACH

November 1 (Tuesday)

Cornerstone Church
 300 North Redondo Avenue
 (West of Aviation Blvd. and north of 2nd St.)
 Zip: 90266

10:00 a.m. to 12:00 p.m.

Note: Class will be held in the Sanctuary. **Please DO NOT CALL FACILITY. Refer to the numbers on the back of schedule.**

City/Address	Date/Time
--------------	-----------

If you are late, you will not be admitted.

PALMDALE

November 1 (Tuesday)

Saint Stephen's Lutheran Church
 1737 East Avenue R
 (Between 17th Street East and 20th
 Street East.)
 Zip: 93550

11:00 a.m. to 1:00 p.m.
 5:00 p.m. to 7:00 p.m.

Note: Classes will be held in the Fellowship Hall. **Please DO NOT CALL FACILITY. Refer to the numbers on the back of schedule.**

WHITTIER

November 1 (Tuesday)

Whittier Hills Baptist Church
 16153 Russell Street
 (Between Costa Green Ave. and Bo-
 gardus Ave.)
 Zip: 90603

1:00 p.m. to 3:00 p.m.
 6:30 p.m. to 8:30 p.m.

Note: Classes will be held in the McClintocks Main Social Hall. **Please DO NOT CALL FACILITY. Refer to the numbers on the back of schedule.**

CERRITOS

November 2 (Wednesday)

Cerritos Park East
 13234 East 166th Street
 (Between Shoemaker Ave. and Carmenita
 Rd.)
 Zip: 90703

10:00 a.m. to 12:00 p.m.
 4:00 p.m. to 6:00 p.m.

Note: Classes will be held in the Malibu Room. **Please DO NOT CALL FACILITY. Refer to the numbers on the back of schedule.**

DIAMOND BAR

November 2 (Wednesday)

South Coast Air Quality Management
 District
 21865 East Copley Drive
 (Between Golden Springs Dr. and South
 Valley Vista Dr.)
 Zip: 91765

10:00 a.m. to 12:00 p.m.
 3:30 p.m. to 5:30 p.m.

Note: Classes will be held in the Auditorium. **Please DO NOT CALL FACILITY. Refer to the numbers on the back of schedule.**

City/Address	Date/Time
--------------	-----------

If you are late, you will not be admitted.

INGLEWOOD	November 2 (Wednesday)
------------------	-------------------------------

Darby Park
 3400 Arbor Vitae Street
 (West of Crenshaw Blvd. and South
 of 90th St.)
 Zip: 90305

10:00 a.m. to 12:00 p.m.
 3:30 p.m. to 5:30 p.m.

Note: Classes will be held in the gymnasium. Please, no heels on gym floor. Additional parking available on West 90th St. **Please DO NOT CALL FACILITY. Refer to the numbers on the back of schedule.**

CLAREMONT	November 3 (Thursday)
------------------	------------------------------

Alexander Hughes Community Center
 1700 Danbury Road
 (Between Scripps Dr. and Syracuse Dr.)
 Zip: 91711

10:00 a.m. to 12:00 p.m.
 3:30 p.m. to 5:30 p.m.

Note: Classes will be held in the Padua Room. **Please DO NOT CALL FACILITY. Refer to the numbers on the back of schedule.**

LYNWOOD	November 3 (Thursday)
----------------	------------------------------

Bateman Hall
 11331 Ernestine Avenue
 (Between Martin Luther King Jr. Blvd.
 and Platt Ave.)
 Zip: 90262

10:00 a.m. to 12:00 p.m.
 3:30 p.m. to 5:30 p.m.

Note: Classes will be held in Room #2. **Please DO NOT CALL FACILITY. Refer to the numbers on the back of schedule.**

TORRANCE	November 3 (Thursday)
-----------------	------------------------------

Torrance First Presbyterian Church
 1900 Crenshaw Boulevard
 (Between West Carson St. and Jefferson
 St.)
 Zip: 90501

1:30 p.m. to 3:30 p.m.

Note: Class will be held in the Fellowship Hall. Enter parking lot from Jefferson St. **Please DO NOT CALL FACILITY. Refer to the numbers on the back of schedule.**

City/Address	Date/Time
--------------	-----------

If you are late, you will not be admitted.

BELL GARDENS	November 4 (Friday)
Bell Gardens Veterans Park 6662 Loveland Street (Between Perry St. and Suva St.) Zip: 90201	10:00 a.m. to 12:00 p.m. 3:30 p.m. to 5:30 p.m.

Note: Classes will be held in Ross Hall. **Please DO NOT CALL FACILITY. Refer to the numbers on the back of schedule.**

HAWTHORNE	November 4 (Friday)
Trinity Lutheran Church and School 4783 West 130th Street (Between Inglewood Ave. and Hawthorne Blvd.) Zip: 90250	10:00 a.m. to 12:00 p.m. 3:30 p.m. to 5:30 p.m. -with Japanese interpreter

Note: Classes will be held in the AMC Room. **Please DO NOT CALL FACILITY. Refer to the numbers on the back of schedule.**

POMONA	November 4 (Friday)
Shield of Faith Christian Center 1750 West Holt Avenue (Between Erie St. and Union Ave.) Zip: 91768	1:30 p.m. to 3:30 p.m.

Note: Classes will be held in the Fellowship Hall. **Please DO NOT CALL FACILITY. Refer to the numbers on the back of schedule.**

PARAMOUNT	November 5 (Saturday)
Progress Park Plaza West 15500 Downey Avenue (Between Alondra Blvd. and Somerset Blvd.) Zip: 90723	10:00 a.m. to 12:00 p.m. 4:00 p.m. to 6:00 p.m.

Note: Classes will be held in the Auditorium. It is the building closest to Downey Avenue. **Please DO NOT CALL FACILITY. Refer to the numbers on the back of schedule.**

City/Address	Date/Time
--------------	-----------

If you are late, you will not be admitted.

PASADENA	November 5 (Saturday)
-----------------	------------------------------

Westminster Presbyterian Church 1757 North Lake Avenue (Between E. Woodbury Rd. and Wash- ington Blvd.) Zip: 91104	10:00 a.m. to 12:00 p.m. 4:00 p.m. to 6:00 p.m.
--	--

Note: Classes will be held in Morrison Hall. **Please DO NOT CALL FACILITY. Refer to the numbers on the back of schedule.**

BEVERLY HILLS	November 6 (Sunday)
----------------------	----------------------------

Roxbury Park 471 South Roxbury Drive (Between West Olympic and West Pico Blvd.) Zip: 90210	12:00 p.m. to 2:00 p.m. 2:30 p.m. to 4:30 p.m.
--	---

Note: Classes will be held in the Auditorium. **Please DO NOT CALL FACILITY. Refer to the numbers on the back of schedule.**

NORWALK	November 6 (Sunday)
----------------	----------------------------

Norwalk Arts and Sports Complex 13200 Clarkdale Avenue (Between Sproul St. and Olive St.) Zip: 90650	10:00 a.m. to 12:00 p.m. 1:00 p.m. to 3:00 p.m. 3:30 p.m. to 5:30 p.m. <i>-with Spanish interpreter</i>
---	--

Note: Classes will be held in the Multipurpose Room. Parking available across from the facility at the corner of Clarkdale Ave. and Sproul St. **Please DO NOT CALL FACILITY. Refer to the numbers on the back of schedule.**

SAN DIMAS	November 6 (Sunday)
------------------	----------------------------

Ladera Serra Park 975 Calle Serra (Off of Via Verde. Take Avenida Entrada north to Calle Serra.) Zip: 91773	10:00 a.m. to 12:00 p.m. 1:00 p.m. to 3:00 p.m. 3:30 p.m. to 5:30 p.m.
---	--

Note: Classes will be held in the Recreation Building. **Please DO NOT CALL FACILITY. Refer to the numbers on the back of schedule.**



SUMMARY OF DUTIES

ABOUT THE CLASSES

Classes for Clerks are 2 hours long.

You will receive 2 training manuals in class:

1- ***Election Guide and Checklist***: This guide will show you step by step how to set up the polling place, assist voters, and close the Polls.

2- ***What To Do If...***: This booklet gives solutions to issues that may arise on Election Day.

Instructors will review materials and, as time allows, answer questions. You will also have the opportunity to view and operate the Precinct Ballot Reader and Audio Ballot Booth and see how easy they are to use.

ABOUT YOUR DUTIES

The following is just a short overview of duties. (The Election Guide and Checklist gives detailed instructions).

As a Clerk, you will assist the Inspector in setting up the polling place, assisting voters, closing the polls, and packing supplies. The Inspector will assign you to one of the four job positions that may be rotated throughout the day:

- ***Roster Clerk Position***: where voters will sign Roster.
- ***Street Index Clerk Position***: where you line out the address of voters as they sign in.
- ***Ballot Clerk Position***: where you give voters a ballot and demonstrate to voters how to vote using the InkaVote voting device.
- ***Ballot Box Clerk Position***: where you assure that the voter places voted ballots into the Precinct Ballot Reader and assist voters using the Audio Ballot Booth.

In addition there are ***Provisional Voter Processing Procedures*** where you assist voters who need to vote using the Provisional Envelope.



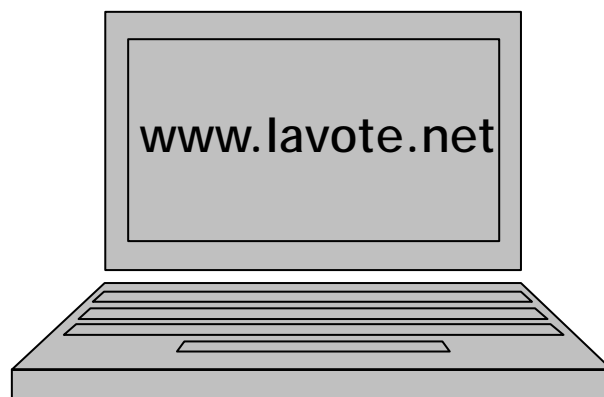
If you still have questions after you have attended a class and reviewed the materials, you may contact us as indicated on the back page of this schedule.

TELEPHONE DIRECTORY

For more information contact the **Registrar-Recorder/County Clerk** at **1 (800) 815-2666** and follow the prompts, or you may directly call the offices listed below:

- **Registering to Vote**.....(562) 466-1310
After regular office hours (8 a.m. to 5 p.m.) you may leave a recorded message requesting information forms to be mailed to you the next day.
- **Registration/Sample Ballot Inquiries**.....(562) 466-1323
Verification of voter status, where to vote and assistance with registration/sample ballot problems. Under federal law voter information and sample ballots are available in the following languages: Chinese, Japanese, Korean, Spanish, Tagalog and Vietnamese. Call 1 (800) 481-8683 to request information.
- **Vote By Mail Ballots**.....(562) 466-1323
Information on how to request and/or complete application for Vote By Mail Ballot.
- **Election Information**.....(562) 466-1310
General information on elections, registration and voter services.
- **TDD (Hearing Impaired)**.....(562) 462-2259

For quick info, visit our website:





Notes

QUESTIONS?

Please do not call the facilities listed in this schedule.

They provide the rooms for classes and will not be able to answer your questions.

Questions should be directed to:

POLLS

...if you have questions about:

Classes-Your Assignment-Getting Paid-Your Precinct Board

*For the quickest response, call
the number on your appointment notice .*

If you do not have that number call:

562.462.2509 *or*
800.815.2666 (*Option 7*)

“ASK WANDA”

...if you have questions about:

Procedures at the polling place-Something you did not understand in the class

*For the quickest response, send an email to:
AskWanda@rrcc.lacounty.gov*

*...or visit website at www.lavote.net, under Pollworker Information,
click on “For Pollworkers only,” then click on “Ask Wanda.” Inquiries
should be made prior to the election. “Ask Wanda” staff is not available
on Election Day.*

If you do not have email, call:

562.462.2728
