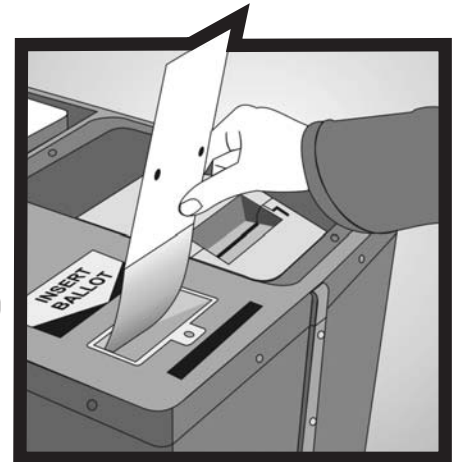
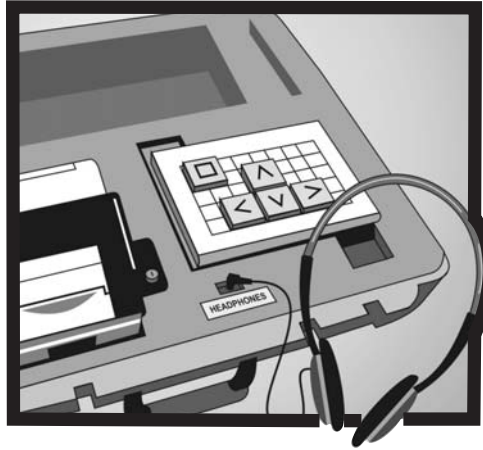




ELECTION TRAINING CLASS SCHEDULE



INSPECTORS Only

November 8, 2011

Local and Municipal Consolidated Elections



Los Angeles County REGISTRAR-RECORDER/COUNTY CLERK



Los Angeles County REGISTRAR-RECORDER/COUNTY CLERK

DEAN C. LOGAN
Registrar-Recorder/County Clerk

Dear Pollworker:

The Los Angeles County Registrar Recorder/County Clerk would like to thank you for your participation in volunteering as a Pollworker for the November 8, 2011 Local and Municipal Consolidated Elections. Your involvement greatly contributes to conducting successful elections for the citizens of Los Angeles County.

This booklet contains the schedule of Inspector training classes for the November 8, 2011 Local and Municipal Consolidated Elections. The classes listed are for **INSPECTORS only**. Clerks will be mailed a separate schedule that lists locations and times for Clerk classes.

To assist you in selecting the most convenient class for you to attend, the schedule is arranged by:

- The dates the classes will be held throughout the County.
- Alphabetical order of cities and communities (refer to alphabetical listing on page 3)

Please note that reservations for training classes are not required.

Remember, attending Pollworker training is important. California Elections Code Section 12309 requires that all Precinct Inspectors attend a training class; therefore, in order to serve as an Inspector you must attend an Inspector class. Inspectors who attend a Clerk class will not receive credit for attending training and will not be able to serve as an Inspector on Election Day. In addition, in order to receive your \$25 class compensation, you must complete the Inspector Online Training Course aside from attending the in-class training. (*Refer to your appointment letter for further details regarding online training*).

Please remember to bring your attendance slip when attending training and turn it in at the end of the class so that you may receive credit for attending. Your attendance slip is located at the bottom of your Appointment Letter. Any questions regarding your appointment should be directed to the Polls Section (*refer to the phone number on your Appointment Letter*).

In an effort to accommodate Pollworkers, we try to schedule trainings throughout Los Angeles County; therefore, we hope you find a convenient location for you to attend. Once again, we thank you for your dedication and we look forward to seeing you in training class.

Sincerely,
BLANCA CASARRUBIAS
Training Director

What's Inside

Important Information... *Page 2*

Table of Contents for Locations... *Pages 3-4*

Class Schedule Details... *Page 5*

Summary of Duties... *Page 20*

Telephone Directory... *Page 21*

Questions/Contact Page... *Back Page*

IMPORTANT INFORMATION

This booklet contains the classes for **Inspectors only**.



Please **be on time** to avoid disrupting class and to assure you do not miss any important information. Instructors will direct you to another class if you are late.

Attendance slips will be collected at the end of the class. Please schedule your time so you may stay till the end of class. **You will not receive credit for attending a class if you leave early.**

◦ REMEMBER – You must attend Training Class **and** complete the **Inspector Online Training Course** to receive \$25 class attendance compensation.

◦ RESERVATIONS are neither required nor accepted.

◦ You may attend a class at any location.

◦ You may attend as many classes as you like. However, you will only be compensated for one class.

- Parking fees are the responsibility of the Pollworker.
- All locations are wheelchair accessible, unless otherwise noted.
- Please see Index listing for locations that will have a Language Interpreter.



You will need to turn in the attendance slip located at the bottom of your appointment letter when you attend class.

**Avoid the crowd...
First two weeks are best!!**

Table of Contents

LOCATION	Page	Quick Date Reference
AGOURA HILLS	13	Oct 27 (Thurs)
ALTADENA	14	Oct 30 (Sun)
ARTESIA	11	Oct 24 (Mon)
AZUSA	5	Oct 11 (Tues)
BALDWIN PARK	14	Oct 29 (Sat)
BELL GARDENS	18	Nov 4 (Fri)
CALABASAS	8	Oct 18 (Tues)
CERRITOS	17	Nov 2 (Wed)
CITY OF INDUSTRY	9	Oct 20 (Thurs)
CLAREMONT	17	Nov 3 (Thurs)
COMPTON	6	Oct 14 (Fri)
COMPTON	12	Oct 26 (Wed)
COVINA	13	Oct 28 (Fri)
CULVER CITY	6	Oct 13 (Thurs)
CULVER CITY	13	Oct 27 (Thurs)
DIAMOND BAR	17	Nov 2 (Wed)
DUARTE	8	Oct 19 (Wed)
EL MONTE	15	Oct 31 (Mon)
EL SEGUNDO	12	Oct 26 (Wed)
GLENDORA	7	Oct 17 (Mon)
GLENDORA	11	Oct 24 (Mon)
HAWAIIAN GARDENS	5	Oct 11 (Tues)
HAWTHORNE	18	Nov 4 (Fri)
HERMOSA BEACH	14	Oct 28 (Fri)
INGLEWOOD	5	Oct 12 (Wed)
INGLEWOOD	17	Nov 2 (Wed)
LA CANADA (FLINTRIDGE)	15	Oct 31 (Mon)
LA PUENTE	10	Oct 23 (Sun)
LYNWOOD	18	Nov 3 (Thurs)
LANCASTER	6	Oct 14 (Fri)

Table of Contents

LOCATION	Page	Quick Date Reference
MANHATTAN BEACH.....	16	Nov 1 (Tues)
MAYWOOD	8	Oct 19 (Wed)
MONTEBELLO	11	Oct 25 (Tues)
NORWALK	15	Oct 30 (Sun)
PALMDALE	10	Oct 22 (Sat)
PALMDALE	16	Nov 1 (Tues)
PARAMOUNT	19	Nov 5 (Sat)
PASADENA.....	19	Nov 5 (Sat)
PICO RIVERA	7	Oct 15 (Sat)
PICO RIVERA	12	Oct 25 (Tues)
POMONA	9	Oct 20 (Thurs)
POMONA	19	Nov 4 (Fri)
ROLLING HILLS ESTATES	7	Oct 17 (Mon)
ROWLAND HEIGHTS	10	Oct 22 (Sat)
ROSEMEAD.....	6	Oct 14 (Fri)
ROSEMEAD.....	12	Oct 25 (Tues)
SANTA CLARITA	9	Oct 21 (Fri)
SANTA CLARITA	14	Oct 28 (Fri)
SANTA FE SPRINGS.....	10	Oct 21 (Fri)
SOUTH PASADENA	5	Oct 12 (Wed)
SOUTH PASADENA	13	Oct 26 (Wed)
TEMPLE CITY.....	7	Oct 17 (Mon)
TORRANCE	11	Oct 24 (Mon)
TORRANCE	18	Nov 3 (Thurs)
WALNUT	15	Oct 30 (Sun)
WEST COVINA	9	Oct 20 (Thurs)
WEST COVINA	16	Oct 31 (Mon)
WHITTIER	8	Oct 18 (Tues)
WHITTIER	16	Nov 1 (Tues)

City/Address	Date/Time
--------------	-----------

***You must attend an “Inspector’s Class” to serve as an Inspector.
If you are late, you will not be admitted.***

AZUSA	October 11 (Tuesday)
--------------	-----------------------------

Valleydale Park
5525 North Lark Ellen Avenue
(Between Gladstone St. and East Arrow Hwy.)
Zip: 91702

2:00 p.m. to 4:30 p.m.

Note: Class will be held in the Auditorium. **Please DO NOT CALL FACILITY. Refer to the numbers on the back of schedule.**

HAWAIIAN GARDENS	October 11 (Tuesday)
-------------------------	-----------------------------

C. Robert Lee Activity Center
21815 Pioneer Boulevard
(Between Carson St. and 221st St.)
Zip: 90716

2:00 p.m. to 4:30 p.m.

Note: Class will be held in Meeting Room B at the south end of the Senior Center Building. **Please DO NOT CALL FACILITY. Refer to the numbers on the back of schedule.**

INGLEWOOD	October 12 (Wednesday)
------------------	-------------------------------

Darby Park
3400 Arbor Vitae Street
(West of Crenshaw Blvd. and South of 90th St.)
Zip: 90305

12:30 p.m. to 3:00 p.m.
6:00 p.m. to 8:30 p.m.

Note: Classes will be held in the Gymnasium. Please, no heels on gym floor. Additional parking available on West 90th St. **Please DO NOT CALL FACILITY. Refer to the numbers on the back of schedule.**

SOUTH PASADENA	October 12 (Wednesday)
-----------------------	-------------------------------

South Pasadena Library
1115 El Centro Street
(Between Fremont Ave. and Diamond Ave.)
Zip: 91030

12:30 p.m. to 3:00 p.m.
6:00 p.m. to 8:30 p.m.

Note: Classes will be held in the Community Room. It is the building north of library. Please be quiet in the mezzanine area and hallway between restrooms. *“This activity is not sponsored by the City of South Pasadena or the South Pasadena Public Library.”* **Please DO NOT CALL FACILITY. Refer to the numbers on the back of schedule.**

City/Address	Date/Time
--------------	-----------

*You must attend an “Inspector’s Class” to serve as an Inspector.
If you are late, you will not be admitted.*

CULVER CITY

October 13 (Thursday)

Culver Palms United Methodist Church
4464 Sepulveda Boulevard
(Between Braddock Dr. and Franklin Ave.)
Zip: 90230

1:00 p.m. to 3:30 p.m.

Note: Class will be held in the Fellowship Hall. Limited parking is available behind church and there is metered parking on the street . Please do not park in lot in front of the Church or the YMCA Parking lot. **Please DO NOT CALL FACILITY. Refer to the numbers on the back of schedule.**

COMPTON

October 14 (Friday)

Saint Albert the Great Catholic Church
804 East Compton Boulevard
(Between Santa Fe Ave. and South Long Beach Blvd.)
Zip: 90220

1:00 p.m. to 3:30 p.m.

Note: Class will be held in the Small Hall. **Please DO NOT CALL FACILITY. Refer to the numbers on the back of schedule.**

LANCASTER

October 14 (Friday)

Valley View Church of the Nazarene
42338 30th Street West
(Between Avenue L and Avenue M)
Zip: 93536

1:00 p.m. to 3:30 p.m.

Note: Class will be held in the Sanctuary. **Please DO NOT CALL FACILITY. Refer to the numbers on the back of schedule.**

ROSEMEAD

October 14 (Friday)

Rosemead Evergreen Baptist Church
1255 San Gabriel Boulevard
(Between Paramount Blvd. and Rose Glen Ave.)
Zip: 91770

1:00 p.m. to 3:30 p.m.

Note: Class will be held in the Fellowship Hall. **Please DO NOT CALL FACILITY. Refer to the numbers on the back of schedule.**

City/Address	Date/Time
--------------	-----------

***You must attend an “Inspector’s Class” to serve as an Inspector.
If you are late, you will not be admitted.***

PICO RIVERA	October 15 (Saturday)
--------------------	------------------------------

Pico Rivera Peace Lutheran Church
9412 Shade Lane
(Intersects Passons Blvd. between
Slauson Ave. and Telegraph Rd.)
Zip: 90660

1:00 p.m. to 3:30 p.m.

Note: Class will be held in the Parish Hall. **Please DO NOT CALL FACILITY. Refer to the numbers on the back of schedule.**

GLENDORA	October 17 (Monday)
-----------------	----------------------------

Glendora Public Library
140 South Glendora Avenue
(Between Carroll Ave. and East Foothill
Blvd.)
Zip 91741

10:00 a.m. to 12:30 p.m.

Note: Class will be held in the Bidwell Forum Room on the 2nd floor. **Please DO NOT CALL FACILITY. Refer to the numbers on the back of schedule.**

ROLLING HILLS ESTATES	October 17 (Monday)
------------------------------	----------------------------

Peninsula Center Library
701 Silver Spur Road
(Between Crenshaw Blvd. and Hawthorne
Blvd.)
Zip: 90274

10:00 a.m. to 12:30 p.m.

Note: Class will be held in the Community Room, 2nd floor. Parking is located on the roof of the library and the second floor garage for underground parking. Please do not park in nearby shopping area. **Please DO NOT CALL FACILITY. Refer to the numbers on the back of schedule.**

TEMPLE CITY	October 17 (Monday)
--------------------	----------------------------

Community of Christ Church
9468 Broadway
(Between Temple City Blvd. and Baldwin
Ave.)
Zip: 91780

10:00 a.m. to 12:30 p.m.

Note: Class will be held in the Fellowship Hall. **Please DO NOT CALL FACILITY. Refer to the numbers on the back of schedule.**

City/Address	Date/Time
--------------	-----------

***You must attend an “Inspector’s Class” to serve as an Inspector.
If you are late, you will not be admitted.***

CALABASAS	October 18 (Tuesday)
------------------	-----------------------------

Church in the Canyon
4235 Las Virgenes Road
(South of the 101 Freeway and East of
Lost Hills Rd.)
Zip: 91302

2:00 p.m. to 4:30 p.m.

Note: Class will be held in the Fellowship Hall. ***Please DO NOT CALL FACILITY. Refer to the numbers on the back of schedule.***

WHITTIER	October 18 (Tuesday)
-----------------	-----------------------------

East Whittier United Methodist Church
10005 South Cole Road
(Between Lambert Rd and Whittier
Blvd.)
Zip: 90603

1:00 p.m. to 3:30 p.m.

Note: Class will be held in the Fellowship Hall. ***Please DO NOT CALL FACILITY. Refer to the numbers on the back of schedule.***

DUARTE	October 19 (Wednesday)
---------------	-------------------------------

Duarte Community Center
1600 East Huntington Drive
(Between Buena Vista St. and Highland
Ave.)
Zip: 91010

3:00 p.m. to 5:30 p.m.

Note: Class will be held in the Community Center. Street parking only. ***Please DO NOT CALL FACILITY. Refer to the numbers on the back of schedule.***

MAYWOOD	October 19 (Wednesday)
----------------	-------------------------------

United Steel Workers #9518
4735 Slauson Avenue
(Between Atlantic Blvd. and 710 Frwy.)
Zip: 90270

1:00 p.m. to 3:30 p.m.

Note: Class will be held in the Hall. ***Please DO NOT CALL FACILITY. Refer to the numbers on the back of schedule.***

City/Address	Date/Time
--------------	-----------

***You must attend an "Inspector's Class" to serve as an Inspector.
If you are late, you will not be admitted.***

CITY OF INDUSTRY

October 20 (Thursday)

Veterans of Foreign Wars Post #1944
16157 Gale Avenue
(Between Stimson Ave. and Azusa Ave.)
Zip: 91745

12:30 p.m. to 3:00 p.m.
6:00 p.m. to 8:30 p.m.

Note: Classes will be held in the Martin Room. **Please DO NOT CALL FACILITY. Refer to the numbers on the back of schedule.**

POMONA

October 20 (Thursday)

Shield of Faith Christian Center
1750 West Holt Avenue
(Between Erie St. and Union Ave.)
Zip: 91768

12:30 p.m. to 3:00 p.m.

Note: Class will be held in the Fellowship Hall. **Please DO NOT CALL FACILITY. Refer to the numbers on the back of schedule.**

WEST COVINA

October 20 (Thursday)

American Legion Post 790
330 North Azusa Avenue
(Between Workman Ave. and Puente Ave.)
Zip: 91791

10:00 a.m. to 12:30 p.m.
3:30 p.m. to 6:00 p.m.

Note: Classes will be held in the Banquet Hall. **Please DO NOT CALL FACILITY. Refer to the numbers on the back of schedule.**

SANTA CLARITA

October 21 (Friday)

Saint Stephen's Episcopal Church
24901 Orchard Village Road
(Between Wiley Canyon Rd. and Lyons Ave.)
Zip: 91355

2:00 p.m. to 4:30 p.m.

Note: Class will be held in Spurling Hall. **Please DO NOT CALL FACILITY. Refer to the numbers on the back of schedule.**

City/Address	Date/Time
--------------	-----------

***You must attend an "Inspector's Class" to serve as an Inspector.
If you are late, you will not be admitted.***

SANTA FE SPRINGS	October 21 (Friday)
-------------------------	----------------------------

City of Santa Fe Springs-Town Center Hall 10:00 a.m. to 12:30 p.m.
 11740 Telegraph Road
 (Between Pioneer Blvd. and Orr & Day
 Rd.)
 Zip: 90670

Note: Class will be held in the Social Hall. **Please DO NOT CALL FACILITY. Refer to the numbers on the back of schedule.**

PALMDALE	October 22 (Saturday)
-----------------	------------------------------

Saint Stephen's Lutheran Church 11:00 a.m. to 1:30 p.m.
 1737 East Avenue R
 (Between 17th Street East and 20th
 Street East.)
 Zip: 93550

Note: Class will be held in the Fellowship Hall. **Please DO NOT CALL FACILITY. Refer to the numbers on the back of schedule.**

ROWLAND HEIGHTS	October 22 (Saturday)
------------------------	------------------------------

Calvary Church of Eastwood 1:00 p.m. to 3:30 p.m.
 2103 Baston Avenue
 (Between Crosshaven Dr. and Sordello
 St.)
 Zip: 91748

Note: Class will be held in the Fellowship Hall. **Please DO NOT CALL FACILITY. Refer to the numbers on the back of schedule.**

LA PUENTE	October 23 (Sunday)
------------------	----------------------------

Bassett Park 2:00 p.m. to 4:30 p.m.
 510 Vineland Avenue
 (Between Nelson Ave. and Baldwin
 Park Blvd.)
 Zip: 91746

Note: Class will be held in the downstairs gymnasium. **Please DO NOT CALL FACILITY. Refer to the numbers on the back of schedule.**

City/Address	Date/Time
--------------	-----------

***You must attend an “Inspector’s Class” to serve as an Inspector.
If you are late, you will not be admitted.***

ARTESIA	October 24 (Monday)
----------------	----------------------------

AJ Padelford Park
11870 169th Street
(Between Clarkdale Ave. and Elaine Ave.)
Zip: 90701

1:00 p.m. to 3:30 p.m.

Note: Class will be held in the All Purpose Room. **Please DO NOT CALL FACILITY. Refer to the numbers on the back of schedule.**

GLENDORA	October 24 (Monday)
-----------------	----------------------------

Glendora Public Library
140 South Glendora Avenue
(Between Carroll Ave. and East Foothill Blvd.)
Zip: 91741

1:00 p.m. to 3:30 p.m.

Note: Class will be held in the Bidwell Forum Room on the 2nd floor. **Please DO NOT CALL FACILITY. Refer to the numbers on the back of schedule.**

TORRANCE	October 24 (Monday)
-----------------	----------------------------

Torrance First Presbyterian Church
1900 Crenshaw Boulevard
(Between West Carson St. and Jefferson St.)
Zip: 90501

12:30 p.m. to 3:00 p.m.
6:00 p.m. to 8:30 p.m.

Note: Classes will be held in the Fellowship Hall. Enter parking lot from Jefferson St. **Please DO NOT CALL FACILITY. Refer to the numbers on the back of schedule.**

MONTEBELLO	October 25 (Tuesday)
-------------------	-----------------------------

The American Legion Post #272
616 West Cleveland Avenue
(Between Montebello Blvd. and Poplar Ave.)
Zip: 90640

1:00 p.m. to 3:30 p.m.

Note: Class will be held in the American Legion Hall. **Please DO NOT CALL FACILITY. Refer to the numbers on the back of schedule.**

City/Address	Date/Time
--------------	-----------

***You must attend an “Inspector’s Class” to serve as an Inspector.
If you are late, you will not be admitted.***

PICO RIVERA

October 25 (Tuesday)

Pico Rivera Peace Lutheran Church
9412 Shade Lane
(Intersects Passons Blvd. between
Slauson Ave. and Telegraph Rd.)
Zip: 90660

12:30 p.m. to 3:00 p.m.
6:00 p.m. to 8:30 p.m.

Note: Classes will be held in the Parish Hall. ***Please DO NOT CALL FACILITY. Refer to the numbers on the back of schedule.***

ROSEMEAD

October 25 (Tuesday)

Rosemead Evergreen Baptist Church
1255 San Gabriel Boulevard
(Between Valley Blvd. and Mission
Dr.)
Zip: 91770

10:00 a.m. to 12:30 p.m.

Note: Class will be held in the Fellowship Hall. ***Please DO NOT CALL FACILITY. Refer to the numbers on the back of schedule.***

COMPTON

October 26 (Wednesday)

Saint Albert the Great Catholic Church
804 East Compton Boulevard
(Between Santa Fe Ave. and South
Long Beach Blvd.)
Zip: 90220

12:30 p.m. to 3:00 p.m.

Note: Class will be held in the Small Hall. ***Please DO NOT CALL FACILITY. Refer to the numbers on the back of schedule.***

EL SEGUNDO

October 26 (Wednesday)

El Segundo Moose Lodge
514 West Imperial Hwy.
(Between Sepulveda Blvd. and Main
St.)
Zip: 90245

12:30 p.m. to 3:00 p.m.
6:00 p.m. to 8:30 p.m.

Note: Classes will be held in the Main Hall. ***Please DO NOT CALL FACILITY. Refer to the numbers on the back of schedule.***

City/Address	Date/Time
--------------	-----------

***You must attend an “Inspector’s Class” to serve as an Inspector.
If you are late, you will not be admitted.***

SOUTH PASADENA	October 26 (Wednesday)
-----------------------	-------------------------------

South Pasadena Library 1115 El Centro Street (Between Fremont Ave. and Diamond Ave.) Zip: 91030	10:00 a.m. to 12:30 p.m.
--	--------------------------

Note: Class will be held in the Community Room. It is the building North of Library. Please be quiet in the mezzanine area and hallway between restrooms. *“This activity is not sponsored by the City of South Pasadena or the South Pasadena Public Library.” Please DO NOT CALL FACILITY. Refer to the numbers on the back of schedule.*

AGOURA HILLS	October 27 (Thursday)
---------------------	------------------------------

Agoura Bible Fellowship 5564 Foothill Drive (Between Easterly Rd. and Lewis Ln.) Zip: 91301	12:30 p.m. to 3:00 p.m. 6:00 p.m. to 8:30 p.m.
--	---

Note: Classes will be held in the Fellowship Hall. **Please DO NOT CALL FACILITY. Refer to the numbers on the back of schedule.**

CULVER CITY	October 27 (Thursday)
--------------------	------------------------------

Culver Palms United Methodist Church 4464 Sepulveda Boulevard (Between Braddock Dr. & Franklin Ave.) Zip: 90230	10:00 a.m. to 12:30 p.m.
--	--------------------------

Note: Class will be held in the Fellowship Hall. Limited parking is available behind church and there is metered parking on the street. Please do not park in lot in front of Church or the YMCA Parking lot. **Please DO NOT CALL FACILITY. Refer to the numbers on the back of schedule.**

COVINA	October 28 (Friday)
---------------	----------------------------

Covina Woman’s Club 128 South San Jose Avenue (Between East Puente St. and East Badillo St.) Zip: 91723	12:30 p.m. to 3:00 p.m. 6:00 p.m. to 8:30 p.m.
--	---

Note: Classes will be held in the Banquet Room. **Please DO NOT CALL FACILITY. Refer to the numbers on the back of schedule.**

City/Address	Date/Time
--------------	-----------

***You must attend an “Inspector’s Class” to serve as an Inspector.
If you are late, you will not be admitted.***

HERMOSA BEACH	October 28 (Friday)
Kiwanis Club of Hermosa Beach 2515 Valley Drive (Between Gould and 25th Street.) Zip: 90254	12:30 p.m. to 3:00 p.m. 6:00 p.m. to 8:30 p.m.

Note: Classes will be held in the Banquet Hall. ***Please DO NOT CALL FACILITY. Refer to the numbers on the back of schedule.***

SANTA CLARITA	October 28 (Friday)
Saint Stephen’s Episcopal Church 24901 Orchard Village Road (Between Wiley Canyon Rd. and Lyons Ave.) Zip: 91355	1:30 p.m. to 4:00 p.m.

Note: Class will be held in Spurling Hall. ***Please DO NOT CALL FACILITY. Refer to the numbers on the back of schedule.***

BALDWIN PARK	October 29 (Saturday)
Free Will Baptist Church 3941 Merced Avenue (Between Palm Ave. and Ramona Pkwy.) Zip: 91706	1:00 p.m. to 3:30 p.m.

Note: Class will be held in the Assembly Hall. ***Please DO NOT CALL FACILITY. Refer to the numbers on the back of schedule.***

ALTADENA	October 30 (Sunday)
Altadena Farnsworth Park 568 East Mount Curve Road (Between North Marengo Ave. and Lake Ave.) Zip: 91001	2:00 p.m. to 4:30 p.m.

Note: Class will be held in the Upper Davies Building, large Community Room. ***Please DO NOT CALL FACILITY. Refer to the numbers on the back of schedule.***

City/Address	Date/Time
--------------	-----------

***You must attend an “Inspector’s Class” to serve as an Inspector.
If you are late, you will not be admitted.***

NORWALK	October 30 (Sunday)
----------------	----------------------------

Norwalk Arts and Sports Complex
13200 Clarkdale Avenue
(Between Sproul St. and Olive St.)
Zip: 90650

10:30 a.m. to 1:00 p.m.

Note: Class will be held in the Multipurpose Room. Parking available across from the facility at the corner of Clarkdale Ave. and Sproul St. **Please DO NOT CALL FACILITY. Refer to the numbers on the back of schedule.**

WALNUT	October 30 (Sunday)
---------------	----------------------------

Walnut Senior Center
21215 La Puente Road
(Between Morningside Dr. and Spur Trail Ave.)
Zip: 91789

1:00 p.m. to 3:30 p.m.

Note: Class will be held in the Assembly Room. No smoking allowed in the facility or within 20 feet of the exterior door. **Please DO NOT CALL FACILITY. Refer to the numbers on the back**

EL MONTE	October 31 (Monday)
-----------------	----------------------------

Lambert Park
11431 McGirk Avenue
(Between North Peck Rd. and Cedar Ave.)
Zip: 91731

12:30 p.m. to 3:00 p.m.
6:00 p.m. to 8:30 p.m.

Note: Classes will be held in the Auditorium. **Please DO NOT CALL FACILITY. Refer to the numbers on the back of schedule.**

LA CAÑADA FLINTRIDGE	October 31 (Monday)
-----------------------------	----------------------------

La Cañada Presbyterian Church
626 Foothill Boulevard
(Between Oakwood Ave. & Woodleigh Ln.)
Zip: 91011

10:00 a.m. to 12:30 p.m.

Note: Class will be held in the Fellowship Hall. **Please DO NOT CALL FACILITY. Refer to the numbers on the back of schedule.**

City/Address	Date/Time
--------------	-----------

***You must attend an “Inspector’s Class” to serve as an Inspector.
If you are late, you will not be admitted.***

WEST COVINA	October 31 (Monday)
--------------------	----------------------------

West Covina Elk’s Lodge #1996
841 West Merced Avenue
(Between South Glendora Ave. and
California Ave.)
Zip: 91790

12:30 p.m. to 3:00 p.m.
6:00 p.m. to 8:30 p.m.

Note: Classes will be held in the Lodge Hall. **Please DO NOT CALL FACILITY. Refer to the numbers on the back of schedule.**

MANHATTAN BEACH	November 1 (Tuesday)
------------------------	-----------------------------

Cornerstone Church
300 North Redondo Avenue
(West of Aviation Blvd. and north of
2nd St.)
Zip: 90266

1:00 p.m. to 3:30 p.m.

Note: Class will be held in the Sanctuary. **Please DO NOT CALL FACILITY. Refer to the numbers on the back of schedule.**

PALMDALE	November 1 (Tuesday)
-----------------	-----------------------------

Saint Stephen’s Lutheran Church
1737 East Avenue R
(Between 17th Street East and 20th
Street East.)
Zip: 93550

2:00 p.m. to 4:30 p.m.

Note: Class will be held in the Fellowship Hall. **Please DO NOT CALL FACILITY. Refer to the numbers on the back of schedule.**

WHITTIER	November 1 (Tuesday)
-----------------	-----------------------------

Whittier Hills Baptist Church
16153 Russell Street
(Between Costa Green Ave. and Bo-
gardus Ave.)
Zip: 90603

10:00 a.m. to 12:30 p.m.
3:30 p.m. to 6:00 p.m.

Note: Classes will be held in the McClintocks Main Social Hall. **Please DO NOT CALL FACILITY. Refer to the numbers on the back of schedule.**

City/Address	Date/Time
--------------	-----------

*You must attend an “Inspector’s Class” to serve as an Inspector.
If you are late, you will not be admitted.*

CERRITOS	November 2 (Wednesday)
-----------------	-------------------------------

Cerritos Park East
13234 East 166th Street
(Between Shoemaker Ave. and Carmenita Rd.)
Zip: 90703

1:00 p.m. to 3:30 p.m.

Note: Class will be held in the Malibu Room. **Please DO NOT CALL FACILITY. Refer to the numbers on the back of schedule.**

DIAMOND BAR	November 2 (Wednesday)
--------------------	-------------------------------

South Coast Air Quality Management District
21865 East Copley Drive
(Between Golden Springs Dr. and South Valley Vista Dr.)
Zip: 91765

12:30 p.m. to 3:00 p.m.
6:00 p.m. to 8:30 p.m.

Note: Classes will be held in the Auditorium. **Please DO NOT CALL FACILITY. Refer to the numbers on the back of schedule.**

INGLEWOOD	November 2 (Wednesday)
------------------	-------------------------------

Darby Park
3400 Arbor Vitae Street
(West of Crenshaw Blvd. and South of 90th St.)
Zip: 90305

12:30 p.m. to 3:00 p.m.
6:00 p.m. to 8:30 p.m.

Note: Classes will be held in the gymnasium. Please, no heels on gym floor. Additional parking available on West 90th St. **Please DO NOT CALL FACILITY. Refer to the numbers on the back of schedule.**

CLAREMONT	November 3 (Thursday)
------------------	------------------------------

Alexander Hughes Community Center
1700 Danbury Road
(Between Scripps Dr. and Syracuse Dr.)
Zip: 91711

12:30 p.m. to 3:00 p.m.
6:00 p.m. to 8:30 p.m.

Note: Classes will be held in the Padua Room. **Please DO NOT CALL FACILITY. Refer to the numbers on the back of schedule.**

City/Address	Date/Time
--------------	-----------

***You must attend an “Inspector’s Class” to serve as an Inspector.
If you are late, you will not be admitted.***

LYNWOOD	November 3 (Thursday)
----------------	------------------------------

Bateman Hall
11331 Ernestine Avenue
(Between Martin Luther King Jr. Blvd.
and Platt Ave.)
Zip: 90262

12:30 p.m. to 3:00 p.m.
6:00 p.m. to 8:30 p.m.

Note: Classes will be held in Room #2. **Please DO NOT CALL FACILITY. Refer to the numbers on the back of schedule.**

TORRANCE	November 3 (Thursday)
-----------------	------------------------------

Torrance First Presbyterian Church
1900 Crenshaw Boulevard
(Between West Carson St. and Jefferson
St.)
Zip: 90501

10:00 a.m. to 12:30 p.m.

Note: Class will be held in the Fellowship Hall. Enter parking lot from Jefferson St. **Please DO NOT CALL FACILITY. Refer to the numbers on the back of schedule.**

BELL GARDENS	November 4 (Friday)
---------------------	----------------------------

Bell Gardens Veterans Park
6662 Loveland Street
(Between Perry St. and Suva St.)
Zip: 90201

12:30 p.m. to 3:00 p.m.
6:00 p.m. to 8:30 p.m.

Note: Classes will be held in Ross Hall. **Please DO NOT CALL FACILITY. Refer to the numbers on the back of schedule.**

HAWTHORNE	November 4 (Friday)
------------------	----------------------------

Trinity Lutheran Church and School
4783 West 130th Street
(Between Inglewood Ave. and Hawthorne Blvd.)
Zip: 90250

12:30 p.m. to 3:00 p.m.
6:00 p.m. to 8:30 p.m.

Note: Classes will be held in the AMC Room. **Please DO NOT CALL FACILITY. Refer to the numbers on the back of schedule.**

City/Address	Date/Time
--------------	-----------

***You must attend an “Inspector’s Class” to serve as an Inspector.
If you are late, you will not be admitted.***

POMONA	November 4 (Friday)
---------------	----------------------------

Shield of Faith Christian Center
1750 West Holt Avenue
(Between Erie St. and Union Ave.)
Zip: 91768

10:00 a.m. to 12:30 p.m.

Note: Class will be held in the Fellowship Hall. **Please DO NOT CALL FACILITY. Refer to the numbers on the back of schedule.**

PARAMOUNT	November 5 (Saturday)
------------------	------------------------------

Progress Park Plaza West
15500 Downey Avenue
(Between Alondra Blvd. and Somerset Blvd.)
Zip: 90723

1:00 p.m. to 3:30 p.m.

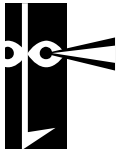
Note: Class will be held in the Auditorium. It is the building closest to Downey Avenue. **Please DO NOT CALL FACILITY. Refer to the numbers on the back of schedule.**

PASADENA	November 5 (Saturday)
-----------------	------------------------------

Westminster Presbyterian Church
1757 North Lake Avenue
(Between E. Woodbury Rd. and Washington Blvd.)
Zip: 91104

1:00 p.m. to 3:30 p.m.

Note: Class will be held in Morrison Hall. **Please DO NOT CALL FACILITY. Refer to the numbers on the back of schedule.**



SUMMARY OF DUTIES

ABOUT THE CLASSES

Classes for Inspectors are 2 ½ hours long

You will receive 2 training manuals in class:

- 1- ***Election Guide and Checklist***: This guide will show you step by step how to set up the polling place, assist voters, and close the Polls.
- 2- ***What To Do If...***: This booklet gives solutions to issues that may arise on Election Day.

Instructors will review materials and, as time allows, answer questions. You will also have the opportunity to view and operate the Precinct Ballot Reader and Audio Ballot Booth and see how easy they are to use.

ABOUT YOUR DUTIES

The following is just a short overview of duties. (The Election Guide and Checklist gives detailed instructions).

As an Inspector, you are responsible for picking up supplies, contacting clerks, assigning duties, opening the polls, assuring that voters are assisted, closing the polls, packing supplies, and taking the supplies to your assigned Check-in Center. You along with the Clerks will rotate jobs in one of the 4 clerk positions:

- ***Roster Clerk Position***: where voters will sign Roster.
- ***Street Index Clerk Position***: where you line out the address of voters as they sign in.
- ***Ballot Clerk Position***: where you give voters a ballot and demonstrate to voters how to vote using the InkaVote voting device.
- ***Ballot Box Clerk Position***: where you assure that the voter places voted ballots into the Precinct Ballot Reader and assist voters using the Audio Ballot Booth.

In addition there are ***Provisional Voter Processing Procedures*** where you assist voters who need to vote using the Provisional Envelope.



If you still have questions after you have attended a class and reviewed the materials, you may contact us as indicated on the back page of this schedule.

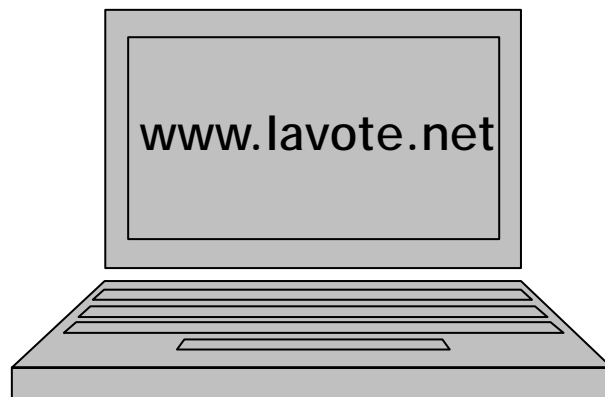
Inspector Schedule

TELEPHONE DIRECTORY

For more information contact the **Registrar-Recorder/County Clerk** at **1 (800) 815-2666** and follow the prompts, or you may directly call the offices listed below:

- **Registering to Vote**.....(562) 466-1310
After regular office hours (8 a.m. to 5 p.m.) you may leave a recorded message requesting information forms to be mailed to you the next day.
- **Registration/Sample Ballot Inquiries**.....(562) 466-1323
Verification of voter status, where to vote and assistance with registration/sample ballot problems. Under federal law voter information and sample ballots are available in the following languages: Chinese, Japanese, Korean, Spanish, Tagalog and Vietnamese. Call 1 (800) 481-8683 to request information.
- **Vote By Mail Ballots**.....(562) 466-1323
Information on how to request and/or complete application for Vote By Mail Ballot.
- **Election Information**.....(562) 466-1310
General information on elections, registration and voter services.
- **TDD (Hearing Impaired)**.....(562) 462-2259

For quick info, visit our website:





Notes

QUESTIONS?

Please do not call the facilities listed in this schedule.

They provide the rooms for classes and will not be able to answer your questions.

Questions should be directed to:

POLLS

...if you have questions about:

Classes-Your Assignment-Getting Paid-Your Precinct Board

*For the quickest response, call
the number on your appointment notice .*

If you do not have that number call:

562.462.2509 *or*

800.815.2666 (*Option 7*)

“ASK WANDA”

...if you have questions about:

Procedures at the polling place-Something you did not understand in the class

For the quickest response, send an email to:

AskWanda@rrcc.lacounty.gov

*...or visit website at www.lavote.net, under Pollworker Information,
click on “For Pollworkers only,” then click on “Ask Wanda.” Inquiries
should be made prior to the election. “Ask Wanda” staff is not available
on Election Day.*

If you do not have email, call:

562.462.2728
