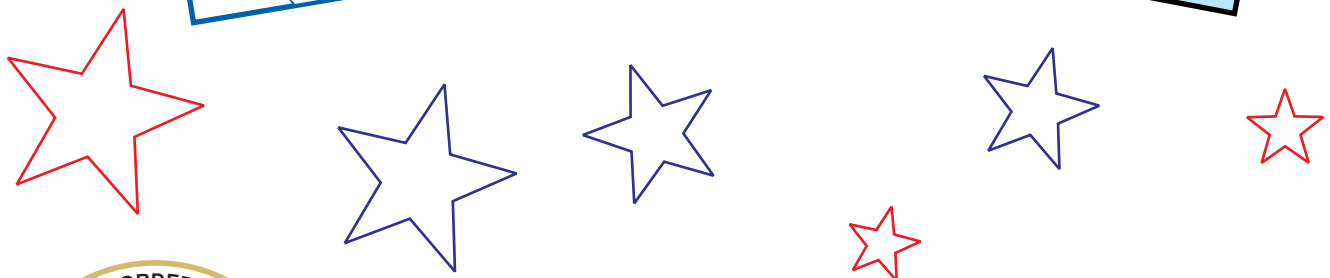
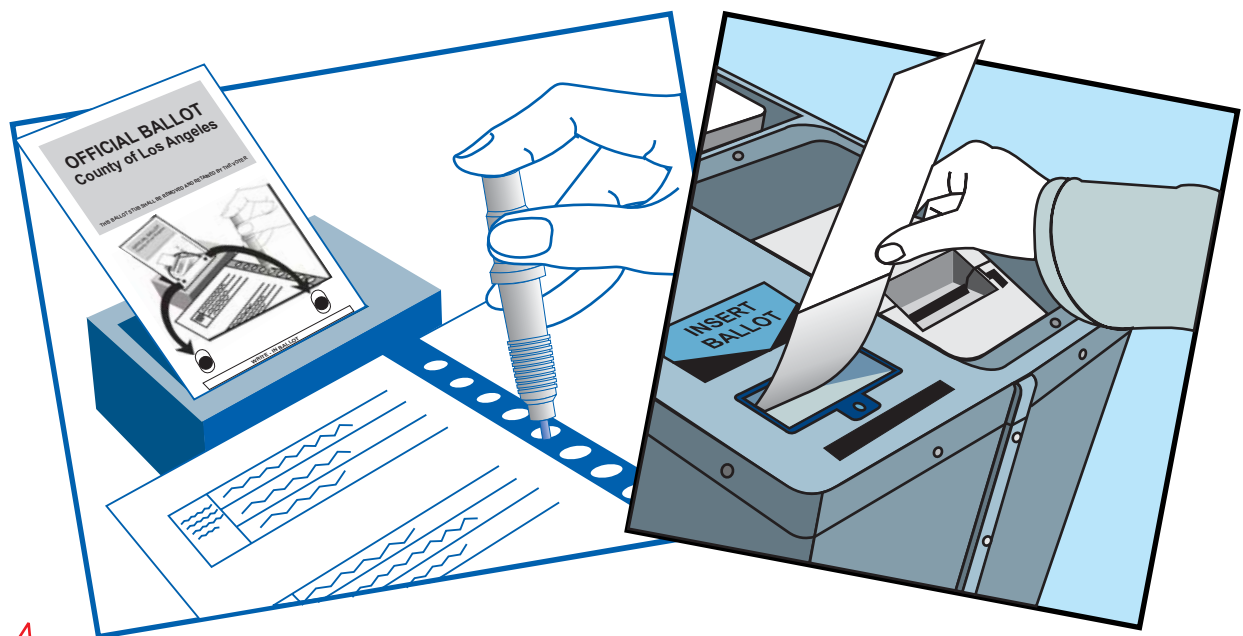
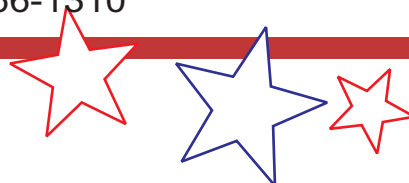


CANDIDATE HANDBOOK and Resource Guide

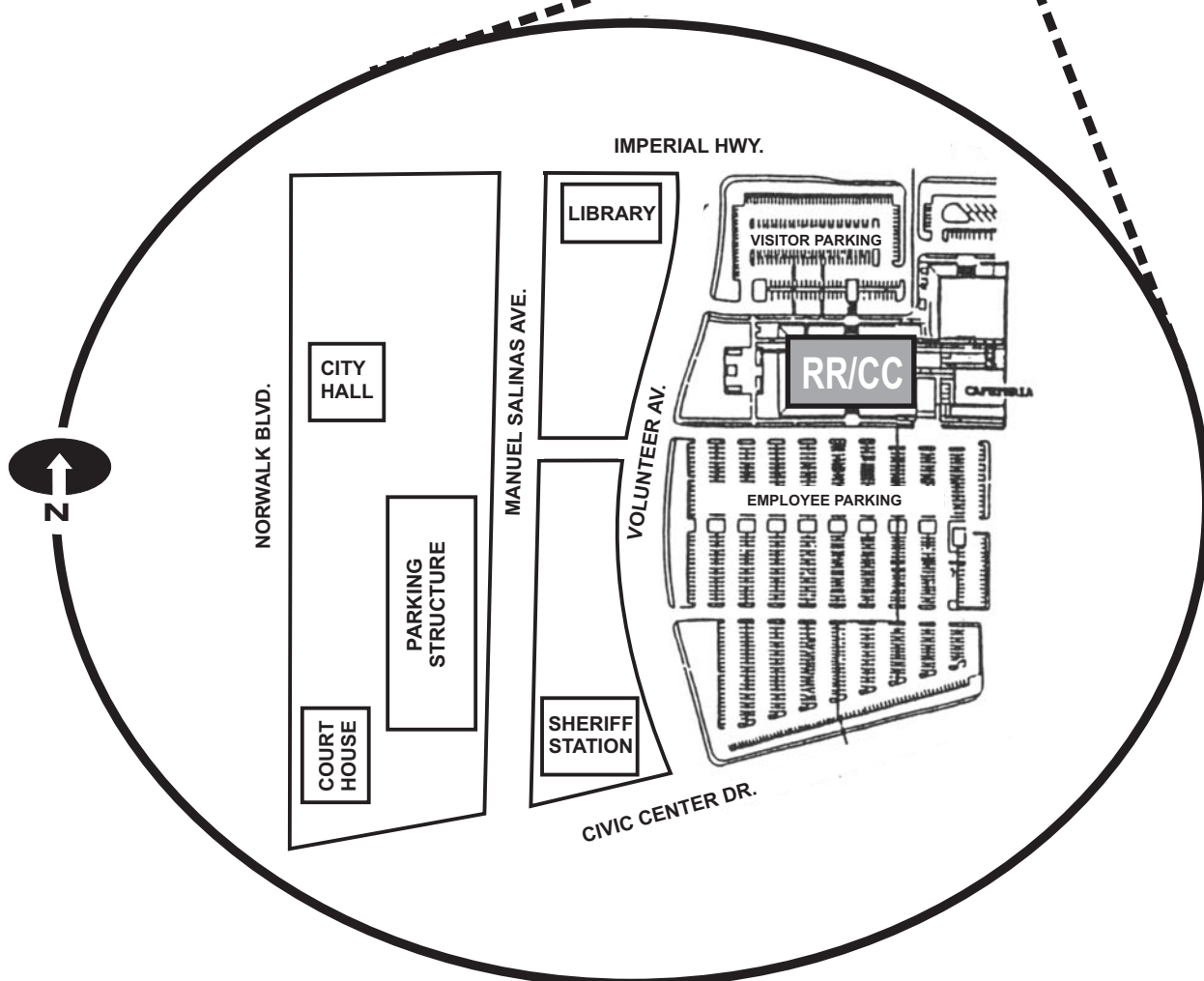
GENERAL ELECTION
November 4, 2008



Dean C. Logan
Registrar-Recorder/County Clerk
12400 Imperial Highway - Norwalk, CA 90650
(562) 466-1310



COUNTY OF LOS ANGELES
REGISTRAR-RECORDER/COUNTY CLERK
12400 IMPERIAL HWY., NORWALK, CA 90650





COUNTY OF LOS ANGELES
REGISTRAR-RECORDER/COUNTY CLERK

12400 Imperial Highway – P.O. Box 1024, Norwalk, California 90651-1024 – www.lavote.net

DEAN C. LOGAN

Registrar-Recorder/County Clerk

TO: Candidates, Campaign Managers and other Interested Individuals

FROM: Dean C. Logan, Registrar-Recorder/County Clerk

SUBJECT: **CANDIDATE HANDBOOK AND RESOURCE GUIDE
NOVEMBER 4, 2008 – GENERAL ELECTION**

This Candidate Handbook and Resource Guide has been prepared to assist candidates filing for offices on the November 4, 2008 General Election ballot. The handbook provides a general overview of major events and valuable information related to critical deadlines for the candidate filing process, guidelines for candidate statements and campaign finance disclosure filing requirements.

We hope that you will find the current handbook format to be both informative and useful. Please review the information provided in this handbook carefully. Section 1, Chapters 1-5, include general candidate filing information and Section 2, Chapters 1-7, include election and campaign information. On-line access to this handbook is available on our web site www.lavote.net. Daily listings of candidates filing for elective offices will also be posted to the web site for public access.

Voters participating in the November 4th election will be using the INKAVOTE PLUS Voting System consisting of a voting device for marking ballot choices and a Precinct Ballot Reader (PBR) which checks for voting errors and provides an opportunity for voters to correct their ballot or request a replacement. There is also an Audio Ballot Booth available at each polling place to assist voters with disabilities and language translation needs in privately and independently casting votes.

Our staff is committed to providing the best possible service to you, your campaign staff and the voters of Los Angeles County. If you have questions or comments regarding items you would like to suggest for future candidate handbooks, please write a letter, send an e-mail to DLogan@rrcc.lacounty.gov or call me at (562) 462-2716.

For additional information regarding the election, including election results, or the INKAVOTE PLUS Voting System, check our web site (www.lavote.net) or call (562) 466-1310.

NOTICE

This Candidate Handbook & Resource Guide has been prepared to assist you in filing documents relating to the election. It includes a calendar of events and summary of provisions and filing requirements. It is not intended to provide legal advice and is for general guidance only.

Please note that it is not within the purview of this office to determine whether a candidate meets the requirements for holding office. Individuals with questions concerning their own or other candidate qualifications or other related matters should seek legal counsel.

Candidates and others using this Handbook & Resource Guide must bear full responsibility to make their own determinations as to all legal standards, duties and factual material contained therein.

Section

1

A stylized graphic of the American flag, featuring a light blue field with white stars on the left and wavy pink and white stripes on the right.

**Candidate
Handbook**

TABLE OF CONTENTS

Section **1** Candidate Filing

CHAPTER 1: CALENDAR OF EVENTS 1-23

**CHAPTER 2: OFFICES TO BE FILLED,
QUALIFICATIONS AND OFFICE INFORMATION**..... 24-28

 Office Information and Qualifications..... 24

 Offices to be Filled..... 25-28

CHAPTER 3: FILING PROCEDURES 29-38

 General Information on Filing Procedures for Candidates..... 29

 Extension of Nomination Period 29

 Candidate Withdrawal 29

 Name to Appear on the Ballot 30

 Ballot Designation Provisions 31-33

 Candidate Nomination Process 34-38

CHAPTER 4: CANDIDATE STATEMENTS 39-47

 Candidate Statements Information 39

 Format & Content Requirements..... 40

 Candidate Statement Forms..... 41-44

 Multilingual Language Translation..... 45

 Notice to Persons Submitting Candidate Statements..... 46

 Candidate Statements Word Counting Guidelines 47

CHAPTER 5: WRITE-IN CANDIDATES..... 48 & 49

 General Information..... 48

 Filing Deadline..... 48

 Election Results for Write-In Candidates 49

 Write-In Candidates To Be Elected 49

Chapter 1

Calendar of Events

CALENDAR OF EVENTS

GENERAL ELECTION – NOVEMBER 4, 2008

IMPORTANT NOTICE

All documents are to be filed with and duties performed by the Registrar-Recorder/County Clerk unless otherwise specified.

DATES	EVENTS
APR 25 (F) E-193	JULY 24 (Th) E-103 PETITION FORMS FOR SIGNATURES IN LIEU – INDEPENDENT CANDIDATES First and last day petition forms may be obtained to secure signatures in lieu of all or a portion of the filing fee. Signatures submitted on in lieu petitions may also be applied to signature requirements on nomination documents. The petitions must be filed no later than July 24 . (E. C. §§ 8061, 8105, 8106, 8302 & 8405)
APR 25 (F) E-193	AUG 8 (F) E-88 NOMINATION PERIOD – INDEPENDENT PRESIDENTIAL ELECTOR CANDIDATES ONLY First and last day for candidates to circulate and leave nomination documents for examination and certification. The Secretary of State shall be notified of the signature verification method to be used. (E. C. §§ 8403,8454 & Ca. Admin. Code § 20087)
JUNE 9 (M) E-148	GOVERNOR’S PROCLAMATION Not later than this date, the Governor shall issue the General Election proclamation. (E. C. §§ 1200 & 12000)
JUNE 9 (M) E-148	AUG. 8 (F) E-88 NOMINATION PERIOD – INDEPENDENT CANDIDATES ONLY (Excludes Presidential Elector Candidates) First and last day for independent candidates to circulate and leave nomination documents for examination and certification. The Secretary of State shall be notified of the signature verification method to be used. (E. C. §§ 8403 & 8454)

DATES	EVENTS
<p>JUNE 26 (Th) E-131</p>	<p>STATEWIDE MEASURES – QUALIFY FOR BALLOT Last day for initiative or legislative measure to qualify for General Election ballot. (Calif. Const. Art. II, § 8(c) & E. C. §§ 9013 & 9040)</p>
<p>JULY 2 (W) E-125</p>	<p>DELIVER NOTICE OF ELECTION AND MAP OF DISTRICT – HEALTH CARE, MUNICIPAL WATER AND RECREATION AND PARK DISTRICTS Not later than this date the District Secretary shall deliver a notice containing: 1) elective offices, 2) candidate statement word limitation (200 or 400 words), 3) designated party responsible for statement cost (candidate or district) and 4) required method of payment, i.e., advance, if cost is payable by candidate.</p> <p>The District Secretary shall also provide a map delineating the district boundaries and depicting divisions within the district, if any, accompanied by a statement indicating in which division directors are to be elected and whether any elective officer is to be elected at large. (E. C. §§ 10509, 10522 & 13307)</p> <p>EXCEPTION: Districts seeking to change division boundaries are required to follow Election Code § 22000. This code requires that changes to division boundaries must be made prior to the 180 days preceding the election of any director.</p> <p>NOTE: WATER AGENCY AND WATER REPLENISHMENT DISTRICTS – Suggested date for district secretary to submit above mentioned information.</p>

DATES	EVENTS
<p>JULY 2 (W) E-125</p>	<p>APPOINTMENTS IN LIEU OF ELECTION – RESOURCE CONSERVATION DISTRICTS If no petition is filed by this date, and the board of directors of either the Antelope Valley Resource Conservation District or the Resource Conservation District of the Santa Monica Mountains has not requested rescission of the previously adopted resolution providing for appointments in lieu of election, the Board of Supervisors shall appoint directors pursuant to Public Resources Code § 9314 and no election shall be conducted by the county elections official.</p>
<p>JULY 3 (Th) SEPT. 2* (Tu) E-124 E-63*</p>	<p>CERTIFICATION OF INDEPENDENT CANDIDATES' NOMINATION DOCUMENTS TO SECRETARY OF STATE First and last day to certify nomination documents to the Secretary of State. (E. C. §§ 8403 & 8504)</p>
<p>JULY 7* (M) E-120*</p>	<p>ADOPT SPECIAL GOVERNING BOARD MEMBER ELECTION RESOLUTION (School Districts) Last day for governing boards to adopt a resolution calling a special school district governing board member election and setting forth the specifications of the election order. (Ed. Code § 5322)</p>
<p>JULY 7 (M) E-120</p>	<p>FORMAL NOTICE OF SPECIAL GOVERNING BOARD MEMBER ELECTION (School Districts) Not later than this date, the County Superintendent of Schools shall deliver a formal notice of a special governing board member election to the Registrar-Recorder/County Clerk. (Ed. Code §§ 5324 & 5325)</p> <p>BOARD RESOLUTION re CANDIDATE STATEMENTS (Local Nonpartisan Offices) Not later than this date, the jurisdiction's governing body shall by resolution determine the word limitation for candidate statements (200 or 400 words); specify if the candidates or the district will bear the costs of printing and distributing the statements, and if cost is to be paid by candidate, whether advance payment is required. (E. C. § 13307)</p>

*Date adjusted due to weekend and/or holiday.

DATES

EVENTS

JULY 7 (M)
E-120

AUG. 6 (W)
5 P. M.
E-90

NOTICE OF ELECTION – HEALTH CARE, MUNICIPAL WATER, RECREATION AND PARK AND SCHOOL DISTRICTS – PUBLICATION

Between these dates the notice of governing board member election shall be published once in a newspaper of general circulation.

A general press release shall be issued providing information on the elective office and the telephone number to call regarding candidate nomination procedures.

(E. C. § 12112 & Ed. Code § 5363)

NOTICE OF ELECTION – POSTING (UDEL Districts And School Districts)

A copy of the published notices shall be delivered to the District Secretary/Superintendent and each notice shall be posted in the district office.

(E. C. § 12113)

JULY 14 (M)
E-113

NOTICE OF ELECTION – WATER AGENCIES – PUBLICATION

Not later than this date a notice designating the name and date of the election and the offices to be filled shall be published.

(Water Code Appendix 98–52 & 103–6)

JULY 14 (M)
E-113

AUG. 8 (F)
5 P. M.
E-88

NOMINATION PERIOD – LOCAL ELECTIONS CONSOLIDATED WITH THE GENERAL ELECTION

First and last day for candidates in elections consolidated with the General Election to file nomination documents.

(E. C. §§ 10407 & 10510)

DATES

EVENTS

JULY 14 (M) **AUG. 8 (F)**
E-113 5 P. M.
 E-88

CANDIDATE STATEMENTS – LOCAL ELECTIONS CONSOLIDATED WITH THE GENERAL ELECTION (Including Judicial Candidates Nominated at Primary Election)

During this period candidates for a local nonpartisan office may file a candidate statement not to exceed the word limitation prescribed by the governing body **(200 or 400 words)** for inclusion with the sample ballot. The statement shall be filed no later than the last day to file nomination documents.

See procedures for Candidate Statements.

(E. C. §§ 10540 & 13307)

CANDIDATE STATEMENTS – STATE LEGISLATIVE CANDIDATES (State Senate and Member of the State Assembly)

During this period candidates for state legislative office agreeing to voluntarily limit their campaign expenditures may submit a statement for inclusion in the sample ballot. The statement shall not exceed **250 words**. If office is to be voted on in more than one county, candidate should file a statement with each county.

(Govt. Code § 85601 & E.C. § 13307)

NOTE: Candidate Statements for Nonpartisan and State Legislative Candidates are **only** included the Official Sample Ballot Booklet and **will not** be in the Official Vote by Mail Instructions and Guide.

JULY 25 (F) **AUG. 1 (F)**
E-102 E-95

NOTICE OF POSSIBLE APPOINTMENT – WATER REPLENISHMENT DISTRICT – PUBLICATION

Between these dates if only one person or no person has filed for each office to be filled, the notice of possible appointment shall be published once.

(Water Code § 60141.1)

DATES	EVENTS
JULY 29 (Tu) E-98	CHANGE OF CANDIDATES' DESIGNATION ON BALLOT The last day that any nominated candidate may request in writing a different ballot designation than that used at the June 3, 2008 Primary Election. For Federal and State offices, the written request should be made to both the Secretary of State and the county elections official. For local offices, the request should be filed with county elections official. (E. C. § 13107)
AUG. 4* (M) E-92*	SIGNATURE IN LIEU PETITIONS (INDEPENDENT CANDIDATES) – LAST DAY TO VERIFY Last day to determine sufficiency of signatures in lieu of filing fees submitted by independent candidates. If it is determined that the petition is deficient, the candidates may, before the close of nomination period (August 8, 2008), either submit a supplemental petition or pay a pro rata fee. (E. C. § 8106)
Aug. 4 (M) E-92	NOTICE OF RANDOMIZED ALPHABET DRAWING FOR SHARED LEGISLATIVE DISTRICTS (Registrar- Recorder/County Clerk) Last day to notify the news media and other interested parties of the date, time, and place of the drawing to be held on August 14, 2008 . (E. C. §§ 13111 & 13112)

*Date adjusted due to weekend and/or holiday.

DATES

EVENTS

AUG. 8 (F)
5 P. M.
E-88

CONSOLIDATION OF ELECTIONS

Last day for local jurisdictions to file a resolution with the Board of Supervisors requesting consolidation with the General Election.
(E. C. §§ 10401 & 10403)

NOMINATION PERIOD DEADLINE – LOCAL ELECTIONS

Last day for candidates to file nomination documents.
(E.C. §§ 10407 & 10510)

NOMINATION PERIOD DEADLINE – INDEPENDENT CANDIDATES (Including Presidential Electors)

Last day for candidates to circulate and leave nomination documents for examination and certification.
(E. C. §§ 8403 & 8405)

CANDIDATE STATEMENTS FOR LOCAL NONPARTISAN CANDIDATES

Last day for candidates (including nonpartisan candidates nominated at the **June 3, 2008** Primary Election) to file statement not to exceed the word limitation **(200 or 400 words)**. Statement shall be filed no later than the last day to file nomination documents.
(E. C. § 13307)

CANDIDATE STATEMENTS FOR LEGISLATIVE CANDIDATES (State Senate and Member of the State Assembly)

Last day for candidates for state legislative office agreeing to voluntarily limit their campaign expenditures to submit a candidate statement for inclusion in the Official Sample Ballot Booklet. The statement shall not exceed **250 words**. If office is to be voted on in more than one county, candidate should file a statement with each county.
(Govt. Code § 85601)

NOTE: Candidate Statements are **only** included in the Official Sample Ballot Booklet and **will not** be included in the Official Vote By Mail Voting Instructions and Guide.

DATES

EVENTS

AUG. 8 (F)
5 P. M.
E-88

INDEPENDENT CANDIDATES – DEADLINE FOR FILING SUPPLEMENTAL IN LIEU SIGNATURES

Last day to submit supplemental signatures or pay additional pro rata filing fee to cover any deficiency.

(E.C. § 8106)

CANDIDATE WITHDRAWAL – HEALTH CARE, MUNICIPAL WATER, RECREATION AND PARK AND SCHOOL DISTRICTS

No candidate, including incumbent, whose declaration of candidacy has been filed, may withdraw after this date except when nomination period has been extended for that office.

(E. C. §§ 10510 & 10603)

NOTE: Candidates nominated at preceding Primary Election may not withdraw.

NOTICE OF APPOINTMENT – SCHOOL DISTRICTS – PUBLICATION

After this date if no one has been nominated to the office, a notice stating that the governing board intends to make an appointment and the procedures for applying for the office shall be published once in a newspaper of general circulation in the district.

(Ed. Code § 5328.5)

COUNTY MEASURES – FISCAL IMPACT STATEMENT

Last day for a Board of Supervisors to order a county measure to appear on the ballot and direct the county auditor to review the county measure to determine its financial effect and prepare a fiscal impact statement.

(E. C. § 9160)

DATES	EVENTS
AUG. 8 (F) 5 P. M. E-88	ADOPT SPECIAL MEASURE ELECTION RESOLUTION (School Districts) Last day for governing boards to adopt a resolution calling a special school district election to place a measure on the ballot. Copies shall be filed with the county elections official. (Ed. Code. § 5322) STATEMENT IN COMPLIANCE – LAST DAY TO SUBMIT Last day for a local jurisdiction to file statement of bond issue with the county elections official. (E. C. § 9401)
AUG. 9** (Sa) E-87**	AUG. 13 (W) 5 P. M. E-83 NOMINATION EXTENSION PERIOD – HEALTH CARE, MUNICIPAL WATER, RECREATION AND PARK AND WATER REPLENISHMENT DISTRICTS If nomination documents for the incumbent are not filed by 5 p.m. on August 8 the nomination period shall be extended until August 13 , 5 p.m. for persons other than the incumbent. (E. C. §§ 8024 & 10516) NOTE: The extension does not apply: 1. where there is no incumbent to be elected, 2. to water agency elections.
AUG. 9** (Sa) E-87**	AUG. 18 (M) 5 P. M. E-78 PUBLIC EXAMINATION PERIOD – CANDIDATE STATEMENTS/CANDIDATES’ NAMES AND BALLOT DESIGNATIONS During this period candidate statements, candidates’ names and ballot designations shall be open to public examination. A fee may be charged to any person obtaining a copy of the material. During this period any person may file a writ of mandate or an injunction to require any or all of the material/data to be amended or deleted. (E. C. §13313) NOTE: If the nomination period is extended for a particular office, the examination period for that office shall be adjusted to August 14 through August 25* .

*Date adjusted due to weekend and/or holiday.

**August 9 (Saturday) and August 10 (Sunday) office will be closed.

DATES

EVENTS

AUG. 13 (W)
E-83

WRITE-IN PETITION TO PLACE JUDICIAL OFFICE ON BALLOT

If the office did not appear on the Primary Election ballot, a petition containing signatures of **100** registered voters qualified to vote for the office must be filed in order to place the office on the General Election ballot.
(E. C. § 8203)

FILE PETITION TO HOLD ELECTION – HEALTH CARE, MUNICIPAL WATER, RECREATION AND PARK, AND SCHOOL DISTRICTS

Last day to file a petition signed by **10%** or **50** voters (whichever is the smaller number) in the district, trustee area or division requesting that an election be held if nominees do not exceed offices to be filled.

(E. C. § 10515 & Ed. Code § 5326)

APPOINTMENT – NO ELECTION (HEALTH CARE, MUNICIPAL WATER AND RECREATION AND PARK DISTRICTS)

If only one person or no person has filed a declaration of candidacy and if a petition to hold an election has not been filed by this date, a certificate shall be submitted to the Board of Supervisors requesting appointment of the candidates or, if there are no candidates, appointment of any qualified person. Appointments shall be made not later than **November 28**.

(E.C. § 10515)

CANDIDATE WITHDRAWAL – NOMINATION EXTENSION PERIOD – HEALTH CARE, MUNICIPAL WATER, RECREATION AND PARK, AND SCHOOL DISTRICTS

Last day a candidate may withdraw declaration of candidacy papers when nomination period has been extended for that office.

(E. C. §§10516 and 10604)

AMENDMENT OR WITHDRAWAL OF MEASURE – DEADLINE

Last day for county elections official to receive a resolution from a legislative body requesting to withdraw or amend any measure previously submitted for placement on the ballot.

(E. C. § 9605)

DATES

EVENTS

AUG. 14 (Th)
11 A. M.
E-82

RANDOMIZED ALPHABET DRAWING BY SECRETARY OF STATE

The Secretary of State shall hold a public drawing to determine order of candidates' names on ballot by randomly drawing each letter of the alphabet.

(E. C. § 13112)

RANDOMIZED ALPHABET DRAWING FOR SHARED LEGISLATIVE DISTRICTS (Registrar-Recorder/County Clerk)

A public drawing shall be held to determine order of candidates' names on ballot for state legislative districts that encompass more than one county by randomly drawing each letter of the alphabet.

(E. C. § 13111)

AUG. 15 (F)
E-81

DATE FIXED TO SUBMIT ARGUMENTS – PUBLICATION

Not later than this date a notice shall be published once in a newspaper of general circulation setting forth the date fixed to submit arguments for and against any county or school measure.

(E. C. § 9163, 9502 & Govt. Code § 6061)

CERTIFICATION OF CANDIDATES – MUNICIPAL ELECTIONS CONSOLIDATED WITH THE GENERAL ELECTION

Last day for city clerk to transmit the names of qualified candidates to county elections official.

(E. C. § 10403)

DATES

EVENTS

AUG. 18 (M)
5 P. M.
E-78

ARGUMENTS – LAST DATE TO SUBMIT

Last day to submit arguments for or against any county, district or school measure. Arguments may not exceed **300 words** in length. (E. C. §§ 9162, 9163, 9315, 9316, 9501 & 9502)

EXCEPTION: These provisions regarding word limitation do not apply to a measure on school district reorganization.

INSUFFICIENT OR NO NOMINEES – WATER AGENCIES

If on this date, only one person or no person has been nominated for each office, the board of directors shall, by resolution, request the Board of Supervisors to appoint the person nominated, or if no person has been nominated, any qualified person.

(Water Code Appendix 98-52 & 103-106)

AUG. 19 (Tu)
E-77

AUG. 28 (Th)
E-68

PUBLIC EXAMINATION PERIOD FOR BALLOT MEASURE MATERIALS

During this period the clerk shall make available for public examination a copy of any ballot measure text, arguments, and bond statement for any county, district or school measure. A fee may be charged to any person obtaining a copy of the materials. During this period any person may file a writ of mandate or an injunction to require any or all of the material/data be amended or deleted. (E. C. §§ 9190, 9380 & 9509)

DATES

EVENTS

AUG. 26 (Tu)
E-70

NOTICE OF LIST OF CANDIDATES – WATER AGENCIES PUBLICATION

Not later than this date a notice giving the names and addresses of all candidates in the election, the date of the election, and the hours the polls will be open shall be published once. If no election is to be held because of insufficient nominees, a notice of no election shall be published.

(Water Code Appendix 98-52 & 103-6)

AUG. 28 (Th)
E-68

CERTIFIED LIST OF CANDIDATES AND ROTATION LIST

Last day for Secretary of State to transmit the certified list of candidates and rotation list to each elections official.

(E. C. § 8148)

IMPARTIAL ANALYSIS – LAST DAY TO SUBMIT

Recommended last day for County Counsel to transmit impartial analysis for any county, district or school measure.

(E.C. §§ 9160, 9313 and 9500)

REBUTTALS – LAST DAY TO SUBMIT

Last day for authors of arguments for or against a county, district or school district measure to submit rebuttals. Rebuttals may not exceed **250** words in length.

(E. C. §§ 9167, 9317 & 9504)

DEATH OF CANDIDATE

Last day on which the name of a deceased candidate may be removed from the ballot. Facts regarding death must be ascertained at least **68** days prior to the election.

(E. C. § 8810, 10529 & Ed. Code § 5329)

NOTE: This provision does not apply under certain circumstances as set forth in Elections Code §§ 8026 & 8027.

DATES		EVENTS
AUG. 29 (F) E-67	SEPT. 8 (M) E-57	<p>PUBLIC EXAMINATION PERIOD FOR REBUTTALS/IMPARTIAL ANALYSES</p> <p>During this period rebuttals and/or impartial analyses for any county, district or school measure shall be open for public examination. A fee may be charged to any person obtaining a copy of the material. During this period any person may file a writ of mandate or an injunction to require any or all of the material/data to be amended or deleted.</p> <p>(E. C. §§ 9190, 9380 & 9509)</p>
SEPT. 2*(Tu) E-63*		<p>INSUFFICIENT OR NO NOMINEES – WATER REPLENISHMENT DISTRICT</p> <p>If on this date, only one person or no person has been nominated for each office, the governing board shall, by resolution, request the Board of Supervisors to appoint the person nominated, or if no person has been nominated, any qualified person.</p> <p>(Water Code § 60141)</p>
SEPT. 3 (W) E-62	SEPT. 5 (F) E-60	<p>TRANSLITERATION REVIEW PERIOD</p> <p>First and last day candidates may review transliteration of their names. Requests for changes must be submitted to the county elections official no later than the last day of the review period.</p>
SEPT. 5 (F) E-60		<p>SPECIAL VOTE BY MAIL BALLOT APPLICATIONS</p> <p>The first day county elections officials may process applications for special vote by mail ballots. Any applications received by the county elections official prior to this day shall be kept and processed on or after this date. The application must include the statement that the voter cannot vote the ballot during the normal vote by mail period, because of military or other contingencies that preclude normal mail delivery.</p> <p>(E. C. §§ 300 & 3103)</p>

*Date adjusted due to weekend and/or holiday.

DATES		EVENTS
SEPT. 5 (F) E-60	OCT. 28 (Tu) E-7	FEDERAL ELECTION – OVERSEAS VOTER, APPLICATION FOR VOTE BY MAIL BALLOT During this period, the county elections official may begin processing Federal Post Card Applications (FPCA) from special Vote by Mail persons already registered to vote. (E. C. §§ 300, 3001, 3300 - 3311)
SEPT. 8 (M) E-57	OCT. 21 (Tu) E-14	STATEMENT OF WRITE-IN CANDIDACY (Excluding Presidential Electors) A name written on a ballot will not be counted unless the person has filed during this period a statement of write-in candidacy and sponsors' signatures, if applicable, stating that he or she is a write-in candidate for the election. (E. C. §§ 8600 & 8601)
SEPT. 15 (M) E-50		REGISTRATION REPORT TO SECRETARY OF STATE Last day to submit to Secretary of State tapes/reports listing registrations for those persons registered as of September 5, 2008 (E-60). (E. C. § 2187)
SEPT. 25 (Th) E-40	OCT. 14 (Tu) E-21	MAIL SAMPLE BALLOT BOOKLETS A sample ballot booklet shall be mailed to each voter during this period. (E. C. §§ 13302 & 13303) STATE BALLOT PAMPHLET MAILED Between these dates, a state ballot pamphlet shall be mailed to all registered voters. (E. C. § 9094)

DATES	EVENTS
OCT. 6 (M) E-29	OCT. 28 (Tu) E-7 VOTE BY MAIL – FIRST AND LAST DAY TO APPLY Applications may be filed between these dates (both dates inclusive). Applications received prior to the 29th day preceding the election will be kept and processed during this period (E. C. §§ 3001, 3302 & 3003) NOTICE OF ELECTION/ NO ELECTION - WATER REPLENISHMENT DISTRICT – PUBLICATION Between these dates a notice of election shall be published once. If no election is to be held because of insufficient nominees, a notice of no election shall be published. (Water Code §§ 60111 & 60141)
OCT. 6 (M) E-29	EARLY TABULATION SNAP TALLIES Last day to be notified by the Secretary of State/Board of Supervisors that certain offices or measures to be voted on are of more than ordinary public interest and will require early tabulation and announcement. (E. C. § 14440) POLLWORKERS AND POLLING PLACES – APPOINTMENT Last day to appoint pollworkers and designate polling places. A notice of appointment shall be mailed to each pollworker. (E. C. §§ 12286,12307 & 12319)
OCT. 10 (F) E-25	STREET INDEX TO COUNTY CENTRAL COMMITTEES / CENTRAL COMMITTEES, COUNTY COUNCILS Last day to furnish, without charge, a copy of the street index to the state and county central committees, upon written request. The supplemental street index shall also be made available to committees no later than October 28 . (E. C. § 2185)

DATES

EVENTS

OCT. 20 (M)

E-15

REGISTRATION CLOSES

Last day to transfer or register to vote in the general election.

(E. C. §§ 2102 & 2107)

OCT. 21 (Tu)

E-14

OCT. 28 (Tu)

E-7

NEW RESIDENTS AND NEW CITIZEN REGISTRATION PERIOD

Any person who becomes a citizen or establishes residence in California after the 15th day prior to the election may register to vote beginning on the 14th day prior to an election and ending on the 7th prior to the election day. This registration must be executed in the Registrar-Recorder County Clerk's Office. A new resident shall vote a new resident's ballot in that office.

(E. C. §§ 331, 332 & 3500 – 3503)

OCT. 21 (Tu)

E-14

STATEMENT OF WRITE-IN CANDIDACY DEADLINE

The last day for any write-in candidate to file with the county elections official his/her statement of write-in candidacy and the required number of signatures on the nomination papers. No filing fee is required.

(E. C. §§ 8601 & 8604)

LAST DAY FOR PRESIDENTIAL WRITE-IN CANDIDATES

Last day for write-in presidential candidates (any group of individuals, equal in number to the number or presidential electors to which California is entitled) of all parties to file declarations with the Secretary of State in order to have write-in votes counted. No filing fee is required.

(E.C. §§ 8650-8652)

BILINGUAL PRECINCT OFFICER LIST

Last day to prepare list of appointed bilingual precinct officers.

(E.C. § 12303)

DATES

EVENTS

OCT. 24 (F)
E-11

CERTIFIED LIST OF WRITE-IN CANDIDATES

Suggested date for Secretary of State to prepare and send to affected county elections officials a certified list of write-in candidates showing the name of every write-in candidate eligible to receive votes within the county at the General Election, their address and the offices to which they seek election. This list will be mailed to each person in the affected offices.

OCT. 27* (M)
E-8*

TALLY CENTER LOCATION – PUBLICATION

On or before this date a notice specifying the public place to be used as the tally center location for counting the ballots shall be published once in a newspaper of general circulation within the county.
(E. C. § 12109)

OCT. 28 (Tu)
E-7

STATEMENT OF REGISTRATION

Last day to transmit to Secretary of State the total county registration as of **October 20** (E-15).
(E. C. § 2187)

POLLING PLACES – PUBLICATION

Not later than this date, a list of polling places for each precinct shall be published once in a newspaper of general circulation within the county.
(E. C. §§ 12105, 12106 & Govt. Code § 6061)

*Date adjusted due to weekend and/or holiday.

DATES

EVENTS

OCT. 28 (Tu)
E-7

COMPUTER PROGRAM TO SECRETARY OF STATE

Last day to send copy of computer vote counting program and Certificate of Logic and Accuracy Test to Secretary of State.
(E. C. § 15001)

INSUFFICIENT OR NO NOMINEES – WATER REPLENISHMENT DISTRICT AND WATER AGENCIES – BOARD OF SUPERVISORS MAKE APPOINTMENTS

Not later than this date the Board of Supervisors shall appoint to the office or offices to be filled, the person or persons nominated, or if no person has been nominated, any qualified person.
(Water Code § 60141 & Water Code Appendix 98-52 & 103-6)

CANVASS VOTE BY MAIL BALLOTS

The canvass may commence on the **7th day** before the election but the results of the tally shall not be released until after the polls close.
(E. C. § 15101)

OCT. 29 (W)
E-6

NOV. 4 (Tu)
ELECTION
DAY

EMERGENCY VOTE BY MAIL

Between these dates any voter may apply for a Vote By Mail ballot if conditions require his or her absence from the precinct on election day. The voter may designate an authorized representative to pick up and return the ballot.
(E. C. §§ 3021 & 3110)

DATES

EVENTS

NOV. 4 (Tu)
8 P.M.
ELECTION
DAY

ELECTION DAY

Polls open 7 a.m., close 8 p.m.
(E. C. §§ 1000, 1200 & 14212)

VOTE BY MAIL RETURNED – 8 P.M.

Last day for Vote By Mail ballots to be received or turned in personally by the voter to the County Elections Official's office or at any polling place in the county. A designated family member may return the voted ballot under specified conditions.

(E. C. §§ 3017 & 3020)

DEFACING OF UNUSED BALLOTS

At 8 p.m., immediately after polls close, commence defacing or sealing all unused ballots and file an affidavit of the number of ballots destroyed or sealed.

(E. C. §§ 14403 & 14404)

UNOPPOSED JUDGES – DECLARED ELECTED

On this date, unopposed incumbent candidates for the offices of superior court judge who filed for office but whose names did not appear on the Primary or General Election ballots shall be declared elected.

(E. C. § 8203)

NOV. 6 (Th)
E+2

CANVASS ELECTION RETURNS

The canvass of returns shall commence no later than the first Thursday following the election.

(E. C. § 15301)

DEC. 1 (M)
E+27

TAKE OFFICE – DISTRICT ATTORNEY AND COUNTY SUPERVISORS

Officers take office at noon on first Monday in December following the election.

(Art. II, §§ 4 & 6, Art. IV, § 13, County Charter)

DATES	EVENTS
-------	--------

DEC. 2 (Tu)
E+28

COMPLETION OF OFFICIAL CANVASS
The official canvass must be completed within **28 days** of the election.
(E. C. §§ 15301, 15400 – 15401)

NOTE: On **December 1**, the Registrar-Recorder/County Clerk is tentatively scheduled to certify the election results. On **December 2**, the Board of Supervisors is scheduled to declare the election results official.

DEC. 5. (F)
NOON
E+31

TAKE OFFICE – HEALTH CARE AND RECREATION AND PARK DISTRICTS
Officers, elected or appointed, take office at noon on the first Friday in December following the election.
(E.C. § 10554, Health & Safety Code § 32100.5 and Public Resources Code §5784.3)

NOTE: Final Election results will be completed by **December 1**, for the above districts requiring their elected directors to take office on this date.

DEC. 8 (M)
E+34

INSUFFICIENT OR NO NOMINEES – HEALTH CARE, RECREATION AND PARK, AND MUNICIPAL WATER DISTRICTS
Before this date the Board of Supervisors shall if no election is held, appoint the persons nominated or, if no person has been nominated, any qualified person.
(E. C. § 10515)

DATES	EVENTS
-------	--------

DEC. 15 (M) E+41	STATEMENT OF VOTES CAST BY SECRETARY OF STATE Not later than this date, the Secretary of State shall compile, certify and file in his/her office a statement of all votes cast. (E. C. § 15501)
----------------------------	--

DEC. 31 (W) E+57	NOTICE TO SECRETARY OF STATE (UDEL DISTRICTS) Not later than December 31 , immediately following a general district election a statement containing all of the following for each election in the county held pursuant to this part shall be filed with the Secretary of State. <ul style="list-style-type: none">(a) The State list of offices to be filled.(b) The name of each candidate, including occupational designation, if any.(c) The name of each successful candidate.(d) The number of voters eligible to vote in the district and, if voting is by division, the number of voters eligible to vote in each division.(e) The number of votes cast in each division or district.(f) The list of offices for which appointments have been made in lieu of election pursuant to Elections Code Section 10515 together with the names of the persons so appointed. (E. C. § 10552)
----------------------------	---

DATES

EVENTS

JAN. 5 (M)
NOON
E+62

TAKE OFFICE – MUNICIPAL WATER, WATER AGENCIES AND WATER REPLENISHMENT DISTRICTS

Officers, elected or appointed, shall take office at noon on the first Monday in January following the election. (Govt. Code § 24200, Water Code §§ 60139 & 71253 and Water Code Appendix 98–51 and 103–5).

Chapter 2

Office Information,
Candidate Qualifications
and Offices to be filled

OFFICE INFORMATION & QUALIFICATIONS

PARTY AFFILIATION — NO PARTY AFFILIATION REQUIRED.

FILING FEE, NOMINATING PETITIONS AND SALARY — Although neither a filing fee nor nominating petitions are required, a declaration of candidacy must be filed. Salaries vary. (E.C. § 10510, Health & Safety Code § 32002, Water Code §§60138 & 71505, Ed. Code § 5012 & Public Resources Code §§ 5784.3 & 9353)

PLACEMENT OF NAME ON BALLOT — Secretary of State holds a public drawing to determine order of candidates' names on ballot by randomly drawing each letter of the alphabet. No rotation of names on ballot. (E.C. §§ 13111 and 13112)

VOTES REQUIRED TO ELECT CANDIDATES (PLURALITY) When more than one office is to be filled, those candidates, including qualified write-in candidates, who receive the highest number of votes equal to the number of offices to be filled are elected. (E.C. § 10551)

Office Term for all offices: Four Years	Term Begins
<p style="text-align: center;">DIRECTOR — HEALTH CARE DISTRICT</p> <p>Each director shall be a registered voter of the district at the time nomination documents are issued.</p> <p>(Health & Safety Code § 32100 and E.C. § 201)</p>	<p>Noon, December 5, 2008 (Health & Safety Code § 32100.5 and E.C. § 10554)</p>
<p style="text-align: center;">DIRECTOR — MUNICIPAL WATER DISTRICT</p> <p>Each director shall be a registered voter of the district or division, if applicable, at the time nomination documents are issued.</p> <p>(Water Code §§ 71250 & 71501 and E.C. § 201)</p>	<p>Noon, January 5, 2009</p>
<p style="text-align: center;">DIRECTOR — RECREATION AND PARK DISTRICT</p> <p>Each director shall be a registered voter of the district at the time nomination documents are issued.</p> <p>(Public Resources Code § 5784 and E.C. § 201)</p>	<p>Noon, December 5, 2008 (Public Resources Code §§ 5784.3 and 5787.1)</p>
<p style="text-align: center;">DIRECTOR — ANTELOPE VALLEY – EAST KERN WATER AGENCY</p> <p>Each director shall be a registered voter of the division at the time nomination documents are issued.</p> <p>(Water Code Appendix 98-51 & E.C. § 201)</p>	<p>Noon, January 5, 2009 (Water Code Appendix 98–51 & Govt. Code § 24200)</p>
<p style="text-align: center;">DIRECTOR — CASTAIC LAKE WATER AGENCY</p> <p>Each director shall be a registered voter of the division at the time nomination documents are issued. Each director at large shall be a registered voter of the agency.</p> <p>(Water Code Appendix 103-3 & and E.C. § 201)</p>	<p>Noon, January 5, 2009 (Water Code Appendix 103-5 & Govt. Code § 24200)</p>
<p style="text-align: center;">DIRECTOR — WATER REPLENISHMENT DISTRICT</p> <p>Each director shall be a registered voter of the division at the time nomination documents are issued.</p> <p>(Water Code § 60131 and E.C. § 201)</p>	<p>Noon, January 5, 2009 Water Code §§.60134 and 60139; Govt. Code § 24200)</p>
<p style="text-align: center;">GOVERNING BOARD MEMBER SCHOOL AND COMMUNITY COLLEGE DISTRICTS</p> <p>A registered voter of the district or trustee area, if applicable, at the time nomination documents are issued.</p> <p>(E.d. Code §§ 5030, 35107, 72022, & 72103 & E.C. §201)</p>	<p>December 5, 2008 (Ed. Code Sec. 5017)</p>

OFFICES TO BE FILLED

General & School Districts

DISTRICT	NO. OF GOVERNING BOARD MEMBERS TO BE ELECTED	INCUMBENT
<u>HEALTH CARE DISTRICTS</u>		
ANTELOPE VALLEY	3 Full terms	Abdallah S. Farrukh John J. Manning Berna L. Mayer
BEACH CITIES HEALTH	3 Full terms	Walton Dougher (A) Vanessa I. Poster Muriel S. Sarikas (A)
<u>MUNICIPAL WATER DISTRICTS</u>		
CENTRAL BASIN	3 Full terms	Ed Vasquez Rudy C. Montalvo (A) Phillip D. Hawkins
FOOTHILL	2 Full terms	Robert J. Gomperz LaDrena D. Dansby
	1 (Unexpired term ending 01/03/11)	Melvin L. Matthews (A)
HUNTINGTON	3 Full terms	Harold H. Hennacy Ted L. Bartscherer Robert A. Beaudet

(A) Appointed to fill Vacancy

GENERAL AND SCHOOL DISTRICT ELECTIONS (Continued)

DISTRICT	NO. OF GOVERNING BOARD MEMBERS TO BE ELECTED	INCUMBENT
<u>MUNICIPAL WATER DISTRICTS</u> (Continued)		
LAS VIRGENES	2 Full terms	
	Division #1 Division #4	Charles P. Caspary Joseph M. Bowman
SAN GABRIEL VALLEY	2 Full terms	
	Division #2 Division #3	John Siew Ching Leung Joseph C. Reichenberger
THREE VALLEYS	4 Full terms	
	Division #2 Division #4 Division #6 Division #7	David D. De Jesus Bob Kuhn Fred Lantz Dan Horan
UPPER SAN GABRIEL VALLEY	3 Full terms	
	Division #2 Division #3 Division #4	Frank F. Forbes Leon M. N. Garcia (A) R. William "Bill" Robinson
WEST BASIN	2 Full terms	
	Division #3 Division #5	Carol W. Kwan Donald L. (Don) Dear
<u>WATER AGENCIES</u>		
ANTELOPE VALLEY- EAST KERN	3 Full terms	
	Division #4 Division #6 Division #7	George M. Lane Neal A. Weisenberger David A. Rizzo

(A) Appointed To Fill Vacancy

GENERAL AND SCHOOL DISTRICT ELECTION (Continued)

DISTRICT	NO. OF GOVERNING BOARD MEMBERS TO BE ELECTED	INCUMBENT
<u>WATER AGENCIES</u> (Continued)		
CASTAIC LAKE	4 Full terms	
	Division #1	Bill Cooper
	Division #2	E. G. "Jerry" Gladbach
	Division #3 **	William Peci
	At Large**	R. J. Kelly (A)
<u>WATER REPLENISHMENT DISTRICT</u>		
WATER REPLENISHMENT DISTRICT OF SOUTHERN CALIFORNIA	2 Full terms	
	Division #2	Robert E. Katherman
	Division #5	Albert Robles
<u>RECREATION AND PARK DISTRICT</u>		
WESTFIELD	2 Full terms	
		Leslie E. Criswell
		Fred Tramm

** Shared with Ventura County
(A) Appointed

GENERAL AND SCHOOL DISTRICT ELECTION (Continued)

DISTRICT	NO. OF GOVERNING BOARD MEMBERS TO BE ELECTED	INCUMBENT
<u>SCHOOL AND COMMUNITY COLLEGE DISTRICTS</u>		
FULLERTON JOINT UNION HIGH SCHOOL DISTRICT ★	2 Full terms	Bill Dunton Barbara Kilponen
LOWELL JOINT SCHOOL DISTRICT ★	2 Full terms	Eugene N. Dunford Fred W. Shambeck
NORTH ORANGE COUNTY COMMUNITY COLLEGE DISTRICT ★	4 Full terms	
	Trustee Area #1 @	Leonard Lahtinen
	Trustee Area #1 @	Manuel Ontiveros
	Trustee Area #3 @	Michael Matsuda
	Trustee Area #4 @	Molly McClanahan
SNOWLINE JOINT UNIFIED SCHOOL DISTRICT †	2 Full terms	Ann Bashaw Dale Schinke

★ Shared with Orange County

† Shared with San Bernardino County

@ Nominated by Trustee Area-Elected at Large

Chapter 3

Filing Procedures

<p>GENERAL INFORMATION ON FILING PROCEDURES FOR CANDIDATES</p>

GENERAL ELECTION – NOVEMBER 4, 2008

All candidates must be registered voters at time nomination documents are issued and otherwise qualified to vote for the office for which he or she is filing (E.C. § 201).

State law requires that all nomination documents contain the candidate’s name and the elective office title to which he or she is seeking nomination or election; and be signed by the elections official at the time of issuance. Oral and written instructions regarding procedures to be followed in completing the nomination process are given to candidates or authorized agents when the forms are issued.

Only official documents issued by the Registrar-Recorder/County Clerk’s Office may be used. The forms are available at the Registrar-Recorder/County Clerk’s Office, 12400 Imperial Highway, Norwalk, 2nd Floor, Room 2013, between the hours of 8:00 a.m. and 5:00 p.m., Monday through Friday, excluding holidays.

NOMINATION FILING PERIOD

<p>JUNE 9 (M) through AUG. 8, (F) 5 P.M.</p>	<p>E - 148 - 88</p>	<p>NOMINATION PERIOD FOR INDEPENDENT CANDIDATES (Excludes Presidential Elector Candidates)</p>
<p>JULY 14 (M) through AUG. 8, (F) 5 P.M.</p>	<p>E -113 - 88</p>	<p>NOMINATION PERIOD FOR ALL CANDIDATES (Excludes Presidential Elector Candidates)</p>
<p>AUG. 9**(Sa) through AUG. 13 (W)</p>	<p>E - 87** - 83</p>	<p>NOMINATION EXTENSION (If Incumbent Does Not File)</p>
<p>SEPT. 8 (M) through OCT. 21, (Tu) 5 P.M.</p>	<p>E - 57 - 14</p>	<p>FIRST AND LAST DAY TO FILE WRITE-IN NOMINATION DOCUMENTS (Excludes Presidential Electors)</p>

****August 9 (Saturday) and August 10 (Sunday) – Office will be closed.**

EXTENSION OF NOMINATION PERIOD – If an incumbent for any office fails to file nomination documents by **August 8, 2008 5 p.m.**, the nomination period is extended for five (5) days. During this period, any qualified person, **other than the incumbent**, may file nomination documents for the office.

NOTE: The extension does not apply where there is no incumbent eligible to be elected or to Water Agency elections.

CANDIDATE WITHDRAWAL – Withdrawal of candidacy is permitted up to and including the deadline date to file a Declaration of Candidacy. **CANDIDATES NOMINATED AT PRECEDING PRIMARY MAY NOT WITHDRAW.**

(E. C. §§ 10510 & 10603)

NAME TO APPEAR ON THE BALLOT

The **ballot name** may be designated as follows:

- First, middle and last names.
- Initials only and last name.
- A nickname may be included but must be in parentheses () or quotation marks “ ”.
- A short version of the first name, such as “Bill for William,” “Dick for Richard” or “Kathy for Kathleen.”

NO TITLES OR DEGREES ARE ALLOWED IN THE BALLOT NAME. (E.C. § 13106)

WITHIN ONE YEAR OF ANY ELECTION, A CHANGE IN LEGAL NAME SHALL NOT APPEAR ON THE BALLOT UNLESS THE CHANGE WAS MADE BY MARRIAGE OR BY DECREE OF COURT. (E.C. § 13104)

TRANSLITERATION OF CANDIDATE NAMES – Candidates may request that their names be transliterated in those languages that do not use Roman Characters as instructed by the Department of Justice. These languages include Chinese, Japanese and Korean. If applicable, candidates must complete a Transliteration Form and file it with their nomination documents by the specified deadline (88 days prior to the election). Candidates may review the transliteration of names and submit changes to the elections official no later than the last day of the review period, which is normally 60 days prior to the election but subject to change. To schedule a review of your transliterated name, you may call (562) 462-2730 or (562) 462-2832. Refer to Multilingual Voting Services Chapter in Section 2 of this Resource Guide for additional information.

NOTE: On **August 14, 2008** the Secretary of State shall hold a public drawing to determine the order of candidates’ names on the ballot by randomly drawing each letter of the alphabet.

BALLOT DESIGNATION PROVISIONS

SELECTING YOUR BALLOT DESIGNATION – The **ballot designation** describes the current profession, vocation, occupation or incumbency status of the candidate that will appear on the ballot under the candidate's name.

Ballot designations:

- Can be no more than three words.
- Must appear on the Declaration of Candidacy.
- Becomes public record once the information is filed on the Declaration of Candidacy. Ballot designations **cannot be changed after the final date to file nomination documents**.

The listing of a designation on the ballot is OPTIONAL. Only one of the following categories is allowed:

- 1) **Elective Office Title:** Words describing an elective office title may be used **IF** the candidate holds the office at the time nomination documents are filed and the office was filled by a vote of the people.

Example A: Governing Board Member

Example B: Board member, XYZ School District

- 2) **Incumbent:** The word **Incumbent** may be used **IF** the candidate is seeking re-election to the same office and was elected to that office by a vote of the people or was appointed as a nominated candidate in lieu of an election.

- 3) **Appointed Incumbent:** The words **Appointed Incumbent** must be used **IF** the candidate was appointed to the office and is seeking election to that office. The word Appointed may also be used with the office title.

Example A: Appointed Incumbent

Example B: Appointed Board member, XYZ School District

Exception: Candidates appointed to office in lieu of an election **do not** have to use the word appointed.

BALLOT DESIGNATIONS (Continued)

- 4) **Principal Occupation:** No more than **three words** to either describe the current principal profession, vocation, or occupation of the candidate **or** the principal professions, vocations, or occupations of the candidate during the calendar year immediately preceding the filing of nomination documents. Geographical names are considered as one word.

Example A: High School Teacher

Example B: Attorney/Educator/Rancher

Example C: CEO/Councilmember

- 5) **Community Volunteer:** A Community Volunteer shall constitute a valid principal vocation or occupation subject to the following conditions:
- a) A candidate's community volunteer activities constitute his or her principal profession, vocation or occupation.
 - b) A candidate may not use the designation of "community volunteer" in combination with any other principal profession, vocation or occupation.
 - c) A candidate is not engaged concurrently in another principal profession, vocation or occupation.
- 6) **No Occupation Desired:** If no ballot designation is requested, write the word "NONE" and place your initials in the space provided for ballot designation on the Declaration of Candidacy form.

FORMAT OF BALLOT DESIGNATION – Ballot designations selected which exceed space allotted on the ballot (approximately 60 characters) are printed in a smaller typeface pursuant to § 13107(f) of the California Elections Code. **Restrictions:** The rules governing ballot designations can be the subject of confusion. The California Secretary of State's ballot designation regulations are available at the public counter in the Election Information Section, 2nd Floor, Room 2013.

BALLOT DESIGNATION WORKSHEET – A ballot designation worksheet that supports the use of that ballot designation is required to be filed with the Registrar-Recorder/County Clerk at the same time that you file the Declaration of Candidacy. If a candidate fails to file a ballot designation worksheet, no designation will appear on the ballot.

(E.C. § 13107.3)

REJECTION OF BALLOT DESIGNATION – If the designation is in violation of any of the restrictions set forth in the California Elections Code, the candidate will be notified by certified mail return receipt request, addressed to the mailing address appearing on the candidate's ballot designation worksheet. If an alternative designation is not provided within the time allowed, no designation will appear on the ballot.

(E.C. § 13107(c))

BALLOT DESIGNATIONS (Continued)

UNACCEPTABLE DESIGNATIONS – Pursuant to Elections Code §13107(b), the election official shall not accept a ballot designation if:

- a. It would mislead the voter.
- b. It would suggest an evaluation of a candidate, such as outstanding, leading, expert, virtuous, or eminent.
- c. It abbreviates the word “retired” or places it following any word(s) that it modifies.
- d. It uses a word or prefix, such as “former” or “ex-,” which means a prior status. The only exception is the use of the word “retired.”
- e. It includes the name of any political party, whether or not it has qualified for the ballot.
- f. It uses a word(s) referring to a racial, religious or ethnic group.
- g. It refers to any activity that is prohibited by law.

GUIDELINES TO ACCEPTABLE BALLOT DESIGNATIONS (BASIC TEST):

- a. Is it true?
- b. Is it accurate?
- c. Does it mislead?
- d. Is it generic? (This means “IBM” is unacceptable, “computer company” is acceptable.)
- e. Is it neutral? (This means not for or against)
- f. Is it how this person makes a living?

Candidates may review their own ballot designation, as well as that of other candidates, at this office during working hours: Monday through Friday from **August 9,**2008** through **August 18, 2008** or if the nomination period is extended, from **August 9** through **August 13 (excluding holidays)**.

If you have any questions regarding the nomination procedures, please call the Election Planning Section at (562) 462-2317.

**August 12 (Saturday) , August 13 (Sunday) the Registrar-Recorder/County Clerk’s office will be closed.


CANDIDATE NOMINATION PROCESS

AUTHORIZATION TO PICK-UP AND/OR FILE CANDIDATE NOMINATION DOCUMENTS

Candidates who will have their Candidate Nomination Documents picked up and/or filed **via an Agent** must complete the AUTHORIZATION TO PICK-UP AND/OR FILE CANDIDATE NOMINATION DOCUMENTS form.

Below is a **generic sample** of the Authorization Form.

1. Print candidate's (your) name.
2. Print the elective office title.
3. Print the agent's name and phone number.
4. Check the box for each applicable form.
5. Complete the middle section of the form with, how you would like your name to appear on the ballot, along with the other information requested.
6. Complete the **INFORMATION FOR PUBLICATION** box.
7. Sign and date the form before giving it to your Agent.

	COUNTY OF LOS ANGELES REGISTRAR-RECORDER/COUNTY CLERK	ELECTION PLANNING SECTION (562) 462-2317
AUTHORIZATION TO PICK-UP AND/OR FILE CANDIDATE NOMINATION DOCUMENTS		
I, _____, candidate for the office <small>CANDIDATE'S NAME — PLEASE PRINT</small>		
of _____ hereby authorize <small>OFFICE TITLE</small>		
AGENT'S NAME _____		(_____) _____ <small>AGENT'S PHONE NUMBER</small>
to receive and/or file the following nomination documents:		
Please check applicable forms (<input checked="" type="checkbox"/>)		
<input type="checkbox"/> Signature in Lieu of filing fee Petitions		<input type="checkbox"/> Declaration of Candidacy
<input type="checkbox"/> Candidate Statement		<input type="checkbox"/> Nominating Petitions
I am aware that the Nomination documents must be properly executed and delivered to the County of Los Angeles Registrar-Recorder/County Clerk's Office no later than 5:00 p.m. on the last day to file such documents.		
I request that my name be placed upon the ballot as follows: (Please print)		
FIRST NAME _____	MIDDLE NAME OR INITIAL _____	LAST NAME _____
My residence address is:		
STREET ADDRESS _____		
CITY _____	STATE _____	ZIP CODE _____
My telephone numbers are: (DAYTIME) _____ (EVENING) _____		
(FAX) _____		
My internet addresses are: WEBSITE _____ E-MAIL _____		
I would like the following information to be used for purposes of listings prepared and issued to the news media and/or the public. (If none given, the above information will be listed.) INFORMATION FOR PUBLICATION		
STREET ADDRESS _____		
CITY _____	STATE _____	ZIP CODE _____
DAYTIME PHONE: (____) _____		EVENING PHONE: (____) _____
FAX: (____) _____		
WEBSITE: _____		E-MAIL: _____
CANDIDATE SIGNATURE _____		DATE _____
R1024 REV. 7/2005		

CANDIDATE NOMINATION PROCESS (Continued)

You are planning on filing as a candidate for elective office and want to know **“HOW DO I GET STARTED?”** There are five (5) easy steps to the candidate nomination process:

STEP 1 – CANDIDATE REGISTRATION (Applying For Nomination Documents)

Candidates or authorized Agents are required to fill out a Candidate Registration and Qualification (CRQ) form providing the following information:

1. Name as you wish it to appear on ballot.
2. Full name as registered to vote.
3. Residence address.
4. Telephone/Fax numbers.
5. E-mail and/or Web site address.
6. Address and telephone number for publication/media/internet.
7. Elective office title for which you are applying.
8. Signature and date.

LOS ANGELES COUNTY REGISTRAR/RECORDER/COUNTY CLERK CANDIDATE REGISTRATION & QUALIFICATION FORM				FOR OFFICE USE	
				<input type="checkbox"/> SIL	<input type="checkbox"/> NOM
				<input type="checkbox"/> PROVISIONAL FOR REASON OF:	
				AGENT: _____	
NAME TO APPEAR ON BALLOT AS (Please Print IN ALL CAPS)					
FIRST	MIDDLE NAME OR INITIAL (and/or Nickname)	LAST			
NAME AS REGISTERED (if different from ballot name)					
RESIDENCE STREET ADDRESS					
CITY NAME				ZIP CODE	
TELEPHONE NUMBERS DAYTIME: ()		EVENING: ()		FAX: ()	
WEBSITE:			EMAIL:		
ADDRESS AND TELEPHONE NUMBER FOR PUBLICATION / INTERNET AND ISSUED TO NEWS MEDIA (if none given, above residence address and telephone numbers will be used)					
STREET ADDRESS					
CITY NAME				ZIP CODE	TELEPHONE NO.
OFFICE TITLE (include District, Division or Office No.)					
				Initial if FULL TERM	
				Initial if UNEXPIRED TERM	
POLITICAL PARTY (Not Applicable to Non-Partisan Offices)					
ARE YOU AN INCUMBENT?	YES	NO	IF "YES", CHECK ONE	ELECTED	APPOINTED
					APPOINTMENT DATE
"I am aware of the qualifications for office and understand this is not an official filing document."					
SIGNATURE OF CANDIDATE OR AGENT					DATE
FOR OFFICE USE					
FILING FEE/SIGNATURE IN LIEU INFO		PRECINCT NUMBER		CONTEST CONTROL NO.	
FILING FEE \$		RESIDENCE CHECKED <input type="checkbox"/>		PTY CODE	
DATE FILED		RE-REG (NEW ADDRESS) <input type="checkbox"/>		VOTER ID NO.	
NO. SIGNATURES @ \$ EACH	DISTRICT CHECKED <input type="checkbox"/>		CANDIDATE FILING NO.		
BALANCE \$		PARTY CHECKED <input type="checkbox"/>			
CASHIER'S INITIALS	RECEIPT NO.	CAMPAIGN FINANCE DISCLOSURE #		ABL OPER	INSTRUCTOR
		REVIEWER TIME		<input type="checkbox"/> SIL	<input type="checkbox"/> NOM
COMMENTS:					
INITIALS & DATE					

ELECTION PLANNING COPY R106P Rev 4/10

The Candidate Registration and Qualification form is also available on-line at www.lavote.net. Information on the form is used in preparing the nomination documents. It is important that the information is accurate. This information will be printed on listings distributed to the news media and the general public. **CANDIDATE QUALIFICATIONS ARE VERIFIED AT THE TIME OF FILING NOMINATION DOCUMENTS.**

CANDIDATE NOMINATION PROCESS (Continued)

STEP 2 – ISSUING NOMINATION DOCUMENTS

An **Application for Nomination Documents** is prepared from information provided on the Candidate Registration and Qualification (CRQ) form.

This Application must be signed by the candidate or an authorized agent acknowledging awareness of:

1. Qualifications for office.
2. Campaign statement filing requirements.
3. Last day to file nomination papers.
4. Receipt of candidate handbook.

Candidate or Agent must verify that the candidate information, including the name to appear on ballot, office title, addresses, telephone/fax numbers, e-mail and web site are printed correctly on all forms.

COUNTY OF LOS ANGELES REGISTRAR - RECORDER/COUNTY CLERK APPLICATION FOR NOMINATION DOCUMENTS									
I am aware of the following: <ol style="list-style-type: none"> 1. Qualifications for Candidacy for office. 2. Requirements for filing Campaign Statements. 3. Election Candidate Handbook was received. 4. Last day to file Nomination Papers. 									
		<table border="1"> <tr> <td><small>SIGN IN LIEU</small></td> <td><small>NOBINATION</small></td> </tr> <tr> <td><input type="checkbox"/></td> <td><input type="checkbox"/></td> </tr> </table>		<small>SIGN IN LIEU</small>	<small>NOBINATION</small>	<input type="checkbox"/>	<input type="checkbox"/>		
<small>SIGN IN LIEU</small>	<small>NOBINATION</small>								
<input type="checkbox"/>	<input type="checkbox"/>								
Which is <input type="text"/>		5:00 P.M.							
<table border="1"> <tr> <td><small>FULL TERM</small></td> <td><small>UNEXPIRED TERM</small></td> </tr> <tr> <td><small>(PLEASE INITIAL)</small></td> <td><small>(PLEASE INITIAL)</small></td> </tr> <tr> <td><input type="text"/></td> <td><input type="text"/></td> </tr> </table>		<small>FULL TERM</small>	<small>UNEXPIRED TERM</small>	<small>(PLEASE INITIAL)</small>	<small>(PLEASE INITIAL)</small>	<input type="text"/>	<input type="text"/>		
<small>FULL TERM</small>	<small>UNEXPIRED TERM</small>								
<small>(PLEASE INITIAL)</small>	<small>(PLEASE INITIAL)</small>								
<input type="text"/>	<input type="text"/>								
<small>(CANDIDATE or AUTHORIZED REPRESENTATIVE)</small>									
<small>(FILED BY)</small>		<small>(DATE FILED)</small>							
NAME TO APPEAR ON BALLOT									
<input type="text"/>									
OFFICE AND DISTRICT		FILING NUMBER	<input type="text"/>						
<input type="text"/>		ELECTION NUMBER	<input type="text"/>						
		CONTEST NUMBER	<input type="text"/>						
		ISSUE DATE	<input type="text"/>						
PARTY (IF APPLICABLE)	<input type="text"/>								
OCCUPATION									
RESIDENCE ADDRESS STREET ADDRESS CITY NAME			ZIP CODE						
<input type="text"/>			<input type="text"/>						
TELEPHONE NUMBERS	EVENING	DAYTIME	EXTENSION						
	<input type="text"/>	<input type="text"/>	<input type="text"/>						
	FAX	E-MAIL							
	<input type="text"/>	<input type="text"/>							
WEB SITE:			<input type="text"/>						
PUBLICATION ADDRESS STREET ADDRESS CITY NAME			ZIP CODE						
<input type="text"/>			<input type="text"/>						
DATE ISSUED		SIGNATURE IN LIEU	NOMINATION PAPERS						
<input type="text"/>		<input type="text"/>	<input type="text"/>						
DATE FILED		PUBLICATION PHONE							
<input type="text"/>		<input type="text"/>							
		INCUMBENT (Elected/Appointed)							
		<input type="checkbox"/>							
CANDIDATE NAME FIELDS									
FIRST	MIDDLE	NICKNAME							
<input type="text"/>	<input type="text"/>	<input type="text"/>							
LAST	SUFFIX	CRD #	<input type="text"/>						
<input type="text"/>	<input type="text"/>	EI #	<input type="text"/>						
SHORT NAME	<input type="text"/>								

THE CANDIDATE HANDBOOK AND RESOURCE GUIDE, A CAMPAIGN FINANCIAL DISCLOSURE PACKET AND NOMINATION PETITION FORMS, IF APPLICABLE, ARE ISSUED AT THIS TIME.

CANDIDATE NOMINATION PROCESS (Continued)

STEP 3 – DECLARATION OF CANDIDACY (Completing Nomination Documents)

A Declaration of Candidacy Form is prepared from information provided on the Candidate Registration and Qualification form. This declaration form must be signed by the candidate acknowledging name and designation (occupation) requested to be printed on the ballot. Candidate must provide the following required information and verify that the addresses, telephone/fax numbers/e-mail and web site are correct for publication.

1. Fill in your name and designation (occupation) to appear on ballot. Refer to Name to Appear on the Ballot and Ballot Designation Provisions in this Chapter.
2. Fill in your residence, business and mailing addresses.
3. Day time and evening telephone numbers (Fax numbers, e-mail and web site address information is optional).
4. If you are an incumbent, you are to list the name of public office you presently hold.
5. Print name in space provided in "Oath of Office".
6. Fill in place of execution and date.
7. Sign name under penalty of perjury that information is true and correct.

OFFICIAL FILING FORM

REGISTRAR-RECORDER/COUNTY CLERK
LOS ANGELES COUNTY

By: _____
Elections Deputy

Date Issued: _____

DECLARATION OF CANDIDACY
(Elections Code Sections 200, 8040, 10226, 10511, 10602, and Code of Civil Procedure Section 2015.5)

I, _____, hereby declare myself a _____ candidate for nomination to the office of _____.

Full term, or Unexpired term ending _____, to be voted for at the Election to be held on _____.

I hereby request that my name and ballot designation appear on the ballot as follows:

000000 _____
NAME AS IT WILL APPEAR ON BALLOT

BALLOT DESIGNATION REQUESTED _____

NOTE: For federal and state offices the Secretary of State will publish one of the addresses below in the certified list of candidates and on their website. Please check the appropriate box below to indicate which address you wish to be used for this purpose.

Residence Address: _____
City: _____ State: _____ Zip Code: _____

Business Address: _____
City: _____ State: _____ Zip Code: _____

Mailing Address: _____
City: _____ State: _____ Zip Code: _____

E-Mail: _____ Web site: _____
Fax No. () _____ Phone Nos. () _____ () _____ () _____
Daytime Evening

NOTE: Candidates for Judicial Offices are not required to state their residence address on this form.

IMPORTANT: BACKSIDE OF PAGE MUST ALSO BE COMPLETED

I am at present an incumbent of the following public office (if any):
NAME OF PUBLIC OFFICE: _____

"I, _____, do solemnly swear (or affirm) that I will support and defend the Constitution of the United States and the Constitution of the State of California against all enemies, foreign and domestic; that I will bear true faith and allegiance to the Constitution of the United States and the Constitution of the State of California; that I take this obligation freely, without any mental reservation or purpose of evasion; and that I will well and faithfully discharge the duties upon which I am about to enter."

I meet all the statutory and/or constitutional qualifications for this office (including but not limited to citizenship, residency, and party affiliation, if required). If nominated by petition I will accept the nomination/office and will not withdraw any candidacy from the primary or general election.

I certify (or declare) under penalty of perjury under the laws of the State of California that the foregoing is true and correct.

Executed by me in _____, California, this _____ day of _____ in the year _____.

Signature of Candidate: _____

WARNING: Every person acting on behalf of a candidate is guilty of a misdemeanor who deliberately fails to file at the proper time and in the proper place any declaration of candidacy in his/her possession which is entitled to be filed under the provisions of the Elections Code (Section 1E202). I am aware that any person who files or submits for filing a declaration of candidacy knowing that it or any part of it has been made falsity in violation by a fine or imprisonment, or both, as set forth in Section 1E203 of the Elections Code.

FOR USE BY REGISTRAR-RECORDER/COUNTY CLERK'S OFFICE

Examined and certified by me this _____ day of _____ in the year _____.

CONNY B. MCCORMACK
Registrar-Recorder/County Clerk

By: _____
Elections Deputy

NOTE: THIS FORM MUST BE NOTARIZED IF IT IS SIGNED OUTSIDE OF THE STATE OF CALIFORNIA.

CANDIDATE NOMINATION PROCESS (Continued)

STEP 4 – FILING NOMINATION DOCUMENTS

Listed below are mandatory and optional documents to be filed for candidacy. It is the obligation of the candidate to ensure that filing requirements and deadlines are met. All candidates are urged to file documents as early as possible to avoid a last minute rush.



DOCUMENTS	APPLIES TO	FOR FURTHER INFORMATION CONTACT
Declaration of Candidacy	All Candidates	Election Planning Section (562) 462-2317
Candidate Statement Form	Optional for all local non-partisan candidates. Available only for state legislative candidates agreeing to voluntarily limit their campaign expenditures.	Election Planning Section (562) 462-2317
Ballot Designation	If candidate submits a ballot designation, the designation worksheet shall be filed with the elections official at the time the candidate files his or her declaration of candidacy. If candidate fails to file a ballot designation worksheet, no designation shall appear under the candidate's name on the ballot.	Election Planning Section (562) 462-2317
Transliteration Form	All Candidates	Multilingual Voting Service (562) 462-2730 (562) 462-2832
Candidate Campaign Statement Forms	All Candidates	Campaign Financial Disclosure Section (562) 462-2339

STEP 5 – Receive a Candidate Receipt for Nomination Documents

The form is titled "CANDIDATE RECEIPT FOR NOMINATION DOCUMENTS" and includes the following sections:

- NOMINATION** (Date / Initials): Declaration of Candidacy or Affidavit of Nomination, Nominating Position, Party Nominating Position, Candidate Qualification Certification (Local, Sheriff & DA), Transliteration Form, Candidate Statement (Optional).
- CAMPAIGN** (Date / Initials): Campaign Notice (FDD), Statement of Economic Interest (FDD), AFO Declaration (Short Form), Code of Fair Campaign Practices, 800 Notice Campaign Declaration, 800, Assessor, Sheriff, Supervisor, 800 Report of Personal Funds Declaration.
- NAME TO APPEAR ON BALLOT**: OFFICE AND DISTRICT, PARTY (IF APPLICABLE), BALLOT NUMBER, ELECTION NUMBER, CONTEST NUMBER, ISSUE DATE.

CANDIDATE NOMINATION PROCESS (Continued)

STEP 4 – FILING NOMINATION DOCUMENTS

Listed below are mandatory and optional documents to be filed for candidacy. It is the obligation of the candidate to ensure that filing requirements and deadlines are met. All candidates are urged to file documents as early as possible to avoid a last minute rush.



DOCUMENTS	APPLIES TO	FOR FURTHER INFORMATION CONTACT
Declaration of Candidacy	All Candidates	Election Planning Section (562) 462-2317
Candidate Statement Form	Optional for all local non-partisan candidates. Available only for state legislative candidates agreeing to voluntarily limit their campaign expenditures.	Election Planning Section (562) 462-2317
Ballot Designation	If candidate submits a ballot designation, the designation worksheet shall be filed with the elections official at the time the candidate files his or her declaration of candidacy. If candidate fails to file a ballot designation worksheet, no designation shall appear under the candidate's name on the ballot.	Election Planning Section (562) 462-2317
Transliteration Form	All Candidates	Multilingual Voting Service (562) 462-2730 (562) 462-2832
Candidate Campaign Statement Forms	All Candidates	Campaign Financial Disclosure Section (562) 462-2339

STEP 5 – Receive a Candidate Receipt for Nomination Documents

The form is titled "CANDIDATE RECEIPT FOR NOMINATION DOCUMENTS" and includes the text "The following documents have been received." It is divided into two main sections: "NOMINATION" and "CAMPAIGN".

NOMINATION (Date / Initials):

- Declaration of Candidacy or Affidavit of Nomination
- Nominating Petition
- Ballot Nominating Petition
- Candidate Qualification Certification (Localist, Sheriff & DA)
- Transliteration Form
- Candidate Statement (Optional)

CAMPAIGN (Date / Initials):

- Candidate Notice (FDD)
- Statement of Economic Interest (SEI)
- AFO Declaration (Short Form)
- Code of Fair Campaign Practices
- 800 Finance Campaign Declaration
- 800, "Assessor", Sheriff, Supervisor
- 800 Report of Personal Funds Declaration

NAME TO APPEAR ON BALLOT:

OFFICE AND DISTRICT

PARTY (IF APPLICABLE)

Ballot Number, Election Number, Contest Number, Issue Date

Chapter 4

Candidate Statements

CANDIDATE STATEMENTS

California law permits local **nonpartisan** candidates to file a candidate statement to be printed and mailed to voters in the Official Sample Ballot Booklet. Candidates for **state legislative** offices who voluntarily choose to limit their campaign expenditures in accordance with Proposition 34 by appropriately filing a FPPC Form 501 may submit a candidate statement. Filing of a candidate statement is not mandatory but is permitted if the candidate desires to file and pay the appropriate fee.

STATE LAW PROVIDES THAT STATEMENTS MUST BE FILED NO LATER THAN 5 P.M. ON THE LAST DAY OF THE NOMINATION PERIOD

1. Statement is optional and may include the Candidate's age and occupation.
2. Statements may not include references to other candidates. See information below and Notice to Persons Submitting Candidate Statements on **page 46** for restrictions.
3. No changes are allowed after statement is filed.
4. A candidate may request that the statement also be printed in Spanish and included in the sample ballot mailed to all voters in the election area. An additional fee is required to print the Spanish statement. **In compliance with California Law, only English and Spanish candidate statements are included in the Official Sample Ballot Booklet for candidates who wish to have one printed at candidate's own expense.**
5. No reference to candidate's political party affiliation or any partisan political membership or activity is permitted.
6. If legislative district is to be voted on in more than one county, the candidate must file a statement with each county.

NOTE: *The Official Vote By Mail Voting Instructions and Guide does not include Candidate Statements.*

ESTIMATED COST – The form on which statement is submitted is issued with nomination documents and contains word limitation and an estimated cost.

LOCAL NONPARTISAN OFFICES – (County Supervisor, Superior Court Judge and any other eligible candidate) Local agency determines maximum amount of words allowed (200 or 400), responsibility for payment (candidates or agency) and whether it is to be paid in advance. If word limitation is 400 words and a statement of 200 words or less is submitted, only one half of the estimated cost shall be required to be deposited. Refer to Word Counting Guidelines in this Chapter.

CANDIDATE STATEMENTS (Continued)

STATE LEGISLATIVE OFFICES – (State Senator and Member of the Assembly) Candidates who voluntarily choose to limit their campaign expenditures in accordance with Proposition 34 by appropriately filing a FPPC Form 501 may submit a candidate statement for inclusion in the Sample Ballot Booklet. A deposit of the estimated cost is required at the time of filing the statement. The maximum number of words is 250.

(Govt. Code § 85601)

NOTE: For shared districts, candidate must file a statement with each county.

The estimated cost is determined prior to all information being available; therefore, it is an approximation of the actual cost that varies from election to election and may be significantly more or less depending on the actual number of candidates filing statements.

FORMAT AND STYLE INFORMATION

1. Statement will be **typeset** using Dutch801 Rm BT font in 10 point size. However, the statement may be **typed and submitted** using any standard font. Statements will be printed in uniform type, style and spacing. Text submitted indented or centered will be typeset in block paragraph form. See samples of Candidate Statements on **pages 42 and 44** for recommended form and style content.
2. Statements will be printed in uniform type, style and spacing. Use block paragraphs and single space format. Text submitted indented or centered will be typeset in block paragraph form. Entire statements in all capital letters are not acceptable. Indentations, circles, stars, dots, italics and/or bullets cannot be accommodated. However, you may use dashes/hyphens. It is recommended that you do not use dashes or hyphens at the end of a line. Words to be printed in **boldface type**, underscored and/or CAPITALIZED are to be clearly indicated. Any combinations of enhanced words are counted as one word. However, the number of words/acronyms that can be in **boldface type**, underscored and/or CAPITALIZED shall not exceed 25 words per 200 word statement, 30 words per 250 word statement and 50 words per 400 word statement.
3. All statements should be checked by the candidate for spelling and punctuation as the elections official is not permitted to edit any material contained therein.

NOTE: If a statement is formatted to include numerous paragraph breaks and/or individual listings of accomplishments, endorsements, etc., the printed statement may extend to two (2) pages. In these cases, the actual cost for the statement may double and additional cost may be billed to you after the election.

CANDIDATE STATEMENTS (Continued)

CANDIDATE STATEMENT FORM – This is an example of the Candidate Statement Form used by **Nonpartisan** candidates in submitting their statement to be printed in the Official Sample Ballot Booklet. The Candidate Statement Form is included with the packet each candidate receives when nomination documents are issued.

FRONT

BACK



CANDIDATE STATEMENT FORM - NONPARTISAN OFFICES
READ INFORMATION ON BACK OF FORM BEFORE SUBMITTING STATEMENT

STATEMENT OF: _____

CANDIDATE FOR: _____

ELECTION DATE: _____ AGE: _____ OCCUPATION: _____
(Optional) (Optional)

Please type your statement below in upper and lower case letters. The statement text will be typeset using font style DUTCH801 RM BT, size 10 point. However, statement can be submitted using any standard font. See reverse side for information and guidelines including formatting restrictions. Statements are only included in the Official Sample Ballot Booklet and will not be included in the Official Absentee/Vote by Mail Ballot Instructions and Guide.

CANDIDATE STATEMENT INFORMATION AND GUIDELINES
(Elections Code Sections 13307, 13308, 13311 and 13313)

GENERAL INFORMATION: Filing of a statement is optional and applies to local nonpartisan offices. The elections official sends to each registered voter a sample ballot which contains the candidate statements prepared and submitted.

FILING PERIOD: Statement must be filed no later than the close of business hours on the last day of the candidate nomination period.

WITHDRAWAL: A candidate statement cannot be changed or revised once it is filed. A candidate statement may be withdrawn by 5 p.m. of the next business day after the last day to file the statement.

age and occupation and a 200 word description of the candidate's education and qualifications. Some
book for detailed information regarding word counting guidelines.

style and spacing. Use block paragraphs and single space format. Text submitted indented or centered will
lets in all capital letters are not acceptable. Indentations, circles, stars, dots, italics and/or bullets
ashes/hyphens. Words to be printed in boldface type, underscored and/or CAPITALIZED are to be clearly
ounted as one word. However, the number of words/acronyms that can be in boldface type, underscored
a 200 word statement and 50 words per a 400 word statement. All statements should be checked by the
official is not permitted to edit any material contained therein.

ot include the party affiliation of the candidate nor reference any membership or activity in political

Any candidate statement submitted by a candidate shall be limited to a recitation of the candidate's own
d in any way make reference to other candidates or to another candidate's qualifications, character, or
any or all improper content in such a statement. In addition, no candidate statement shall be printed which
ch includes any reference prohibited.

ments shall be confidential until the close of the nomination period. Except for Judicial candidates the
mination period closes, the statements are open to public examination for a ten (10) calendar day period.
r an injunction requiring any or all material to be amended or deleted.

is just an approximation of the actual cost that varies from one election to another election and may be
ing on the actual number of candidates filing statements, or the length and/or format of the statement
und by the estimate and may, on a pro rata basis, bill the candidate for additional actual expense or refund
h the event of underpayment, the elections official may require the candidate to pay the balance of the cost
ficial shall prorate the excess amount among the candidates and refund the excess amount paid.

ESTIMATED COST

ized a 200 400 word maximum, and requires that the estimated cost be paid:
 District will pay for all candidate statements

_____ The estimated cost of your English & Spanish statement is \$ _____

ned on this form and in the Candidate Handbook, and request that my statement as shown on the

rk (x) one box: English English & Spanish

_____ Date _____
_____ () _____
Evening _____

DO NOT PRINT THIS STATEMENT IN THE EVENT
contest on the ballot. _____ No other candidate for this contest files a statement.
Initials _____

OFFICE USE ONLY

Project Code No.: _____
Candidate File No.: _____
Total No. of Words: _____
Total No. of Words in
boldface, capital letters,
and/or underscored: _____
By Deputy: _____


©/Form: CanStatement NP

CANDIDATE STATEMENTS (Continued)

CANDIDATE STATEMENT FORM – This is an example of the Candidate Statement Form used by **State Legislative** candidates in submitting their statement to be printed in the Official Sample Ballot Booklet. The Candidate Statement Form is included with the packet each candidate receives when nomination documents are issued.

BACK

FRONT

CANDIDATE STATEMENT INFORMATION AND GUIDELINES (Government Code Section 85601; Elections Code Sections 13307, 13311 and 13313)	
<div style="text-align: center;">  <p>CANDIDATE STATEMENT FORM – LEGISLATIVE OFFICES READ INFORMATION ON BACK OF FORM BEFORE SUBMITTING STATEMENT</p> </div> <p>STATEMENT OF: _____ 200198</p> <p>CANDIDATE FOR: MEMBER OF THE STATE ASSEMBLY 36th District</p> <p style="text-align: center;">AMERICAN INDEPENDENT</p> <p>ELECTION DATE: 06/03/08</p> <p><small>Please type your statement below in upper and lower case letters. The statement text will be typeset using font style DUTCH801 RM BT, size 10 point. However, statement can be submitted using any standard font. See reverse side for information and guidelines including formatting restrictions. Statements are only included in the Official Sample Ballot Booklet and will not be included in the Official Absentee/Vote by Mail Ballot Instructions and Guide.</small></p>	<p><small>GENERAL INFORMATION: Filing of a statement is optional and made available to candidates who accept voluntary expenditure limits. The elections sample Ballot Booklet which is mailed to each registered voter.</small></p> <p><small>than the close of business hours on the last day of the candidate nomination period.</small></p> <p><small>changed or revised once it is filed. A candidate statement may be withdrawn by 5 p.m. of the next mt.</small></p> <p><small>exceed 250 words.</small></p> <p><small>ndbook for detailed information regarding word counting guidelines.</small></p> <p><small>ype, style and spacing. Use block paragraphs and single space format. Text submitted indented or Entire statements in all capital letters are not acceptable. Indentations, circles, stars, dots, italics er, you may use dashes/hyphens. Words to be printed in boldface type, underscored and/or mbinations of enhanced words are counted as one word. However, the number of words/acronyms CAPITALIZED shall not exceed 30 words per a 250 word statement. All statements should be sion as the elections official is not permitted to edit any material contained therein.</small></p> <p><small>ted by a candidate shall be limited to a recitation of the candidate's own personal background and ence to other candidates or to another candidate's qualifications, character, or activities. Any voter er content in such a statement. In addition, no candidate statement shall be printed which the hich includes any reference prohibited.</small></p> <p><small>ments shall be confidential until the close of the nomination period. Once the nomination period ation for a ten (10) calendar day period. During this period, any person may file a writ of mandate or e amended or deleted.</small></p> <p><small>is just an approximation of the actual cost that varies from one election to another election and may pending on the actual number of candidates filing statements, or the length and/or format of the ficial is not bound by the estimate and may, on a pro rata basis, bill the candidate for additional ng on the final actual cost. In the event of underpayment, the elections official may require the In the event of overpayment, the elections official shall prorate the excess amount among the</small></p> <p style="text-align: center;">ESTIMATED COST</p> <p>_____ The estimated cost of your English & Spanish statement is \$ _____.</p> <p>ox: English <input type="checkbox"/> English & Spanish <input type="checkbox"/></p> <p>stained on this form and in the Candidate Handbook, and request that my statement as ated.</p> <p>_____ Date _____</p> <p>_____ () _____ Evening _____</p> <hr/> <p style="text-align: center;">OFFICE USE ONLY</p> <p>01 Form (Accepted Limits) Yes <input type="checkbox"/> No <input type="checkbox"/></p> <p>andidate File No.: 200198</p> <p>tal No. of Words: _____</p> <p>tal No. of Words in idface, capital letters, d/or underscored: _____</p> <p>By Deputy: _____</p> <p style="text-align: right; font-size: small;">CL 01/08</p>

CANDIDATE STATEMENTS (Continued)



CANDIDATE STATEMENT FORM — LEGISLATIVE OFFICES
READ INFORMATION ON BACK OF FORM BEFORE SUBMITTING STATEMENT



STATEMENT OF: JOHN DOE

CANDIDATE FOR: Any Party Candidate for
Member of the State Assembly, 53rd District

ELECTION DATE: 12/11/07

Please type your statement below in upper and lower case letters. The statement text will be typeset using font style DUTCH801 RM BT, size 10 point. However, statement can be submitted using any standard font. Statements are **only** included in the Official Sample Ballot Booklet and **will not** be included in the Official Vote By Mail Voting Instructions and Guide.

STATEMENT OF JOHN DOE

ANY PARTY CANDIDATE FOR

MEMBER OF THE STATE ASSEMBLY, 55TH DISTRICT

Occupation: Incumbent

FORMAT/CONTENT: This is an example of an acceptable format to be used in a candidate's statement of qualifications. The guidelines for the content of the statement are in a separate section of the Candidate Handbook and Resource Guide.

ENHANCED WORDS: It is acceptable for some words or phrases to be bold, underlined, CAPITALIZED. Hyphens/dashes are allowed. The beginning of each paragraph may also be highlighted as shown in this example.

PARAGRAPHS: The candidate statement is printed in "block" paragraphs, which means each paragraph will start on the left and the right margins will be justified. A double space will appear between paragraphs, as shown in this example.

If elected, I will: 1) *lower taxes*; 2) increase services; 3) cure the common cold.

I belong to the following organizations:

- PTA
- Chamber of Commerce
- Zoological Society
- Bridge Club

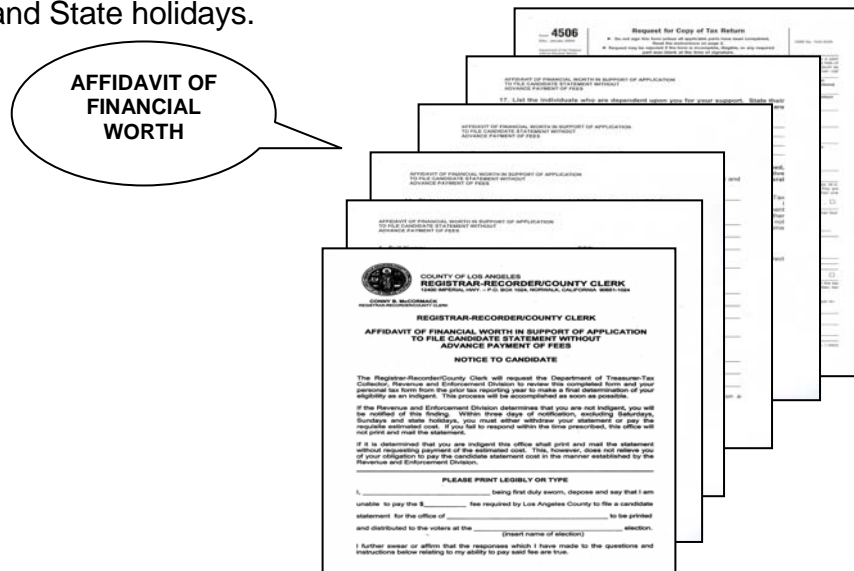
We can trust Jane Doe to protect and serve Any City. Vote for Jane Doe for City Council.

FORM & STYLE ONLY

CANDIDATE STATEMENTS (Continued)

MULTILINGUAL LANGUAGE TRANSLATIONS – Multilingual language translations of candidate statements for voter information booklets may be provided in Chinese, Japanese, Korean, Spanish, Tagalog/Filipino and Vietnamese for qualifying jurisdictions in accordance with the National Voting Rights Act provisions and Department of Justice specifications. These booklets are sent only to voters who have requested translated material. Additional booklets are provided at the polling places on Election Day.

INDIGENT CANDIDATES – If a candidate alleges to be indigent and is unable to pay the advance fee for submitting a candidate statement, the candidate shall submit an Affidavit of Financial Worth to the local agency to be used in determining the candidate's indigence eligibility. The affidavit shall be submitted by the candidate with their candidate statement by the specified deadline. The candidate shall certify under penalty of perjury the truth and correctness of the content of the affidavit. A determination shall be made whether or not the candidate is indigent and the local agency will notify the candidate of its findings. If a determination is made that the candidate is indigent, the local agency shall print and mail the statement without payment of the advance fee. The candidate will be billed the actual pro rata share of the cost following the election. If a determination is made that the candidate is **not** indigent, the candidate shall withdraw the statement or pay the requisite fee within three days of notification, excluding Saturdays, Sundays and State holidays.



PUBLIC EXAMINATION PERIOD – Candidate statements are confidential until after the close of the nomination period. Once the filing period closes, the statements are open to public examination for a **ten (10) calendar day period**. If the nomination period is extended for a particular office, the statements are open to public examination for **another ten (10) calendar day period**. A fee may be charged to any person wishing to obtain a copy of the material. During both periods, any person may file a writ of mandate or an injunction to require any or all of the content/data to be amended or deleted.

(E. C. § 13311)

PUBLIC EXAMINATION PERIOD OF CANDIDATE STATEMENTS FOR CITY OFFICES – City candidates should contact the City Clerk for information on viewing candidate statement content.

STATEMENTS MUST BE FILED NO LATER THAN 5 P.M. ON THE LAST DAY OF THE NOMINATION PERIOD.

NOTICE TO PERSONS SUBMITTING CANDIDATE STATEMENTS

CANDIDATE STATEMENTS LIMITED TO CANDIDATE'S OWN QUALIFICATIONS

This applies to all candidates.

The California Elections Code and case law prohibit **CANDIDATES** from making any reference to another candidate or to another candidate's qualification, character or activities. If the **COUNTY ELECTIONS OFFICIAL** discovers improper content in a candidate statement, the **COUNTY ELECTIONS OFFICIAL** will notify the candidate and give the individual an opportunity to correct the improper language in the candidate statement. If the candidate refuses to correct the improper language, the **COUNTY ELECTIONS OFFICIAL**, as well as any other voter, may bring legal action against the candidate to correct the statement. The prevailing party may also be entitled to obtain attorney's fees for bringing the action.

The **COUNTY ELECTIONS OFFICIAL** will not accept language in a candidate statement that in any way makes reference to other candidates or to another candidate's qualifications, character, or activities pursuant to California Elections Code Section 13308. For these candidates, the **COUNTY ELECTIONS OFFICIAL** will remove the improper language from the statement and not allow it to be printed. The candidate will be notified of the improper language and its removal from the statement.

All prospective candidates may want to refer to California Elections Code Sections 13307, 13308, 13311, 13313, and 13314, as well as the California Court of Appeal ruling in *Dean v. Superior Court*, (1998 4th Dist.) 62 Cal. App.4th 638. However, this list is not exhaustive and candidates are solely responsible for preparation and submittal of candidate's statements that are in conformance with the law. A copy of the above described Elections Code Sections and the *Dean* decision are available from our office at no cost.

CANDIDATE STATEMENTS – WORD COUNTING GUIDELINES
(Elections Code Chapter 1 General Provisions, Section 9)

The following guidelines are used by the Registrar-Recorder/County Clerk's Office for counting words on candidate statements, ballot measure text, arguments, rebuttals and other ballot enclosures. The guidelines do **not** apply to ballot designations for candidates. If the text exceeds the specified 200 or 400 word limit, the author will be asked to delete words or change text until the statement conforms with requirements.

1. **PUNCTUATION MARKS** are not counted. Symbols such as “&” (and), and “#” (number/pound) are not considered punctuation and each symbol is counted as one (1) word.
2. **THE WORDS** "I", "a", "the", "and", "an" are counted as individual words.
3. **GEOGRAPHICAL NAMES** such as countries, states, counties, cities, towns, or jurisdictions are counted as one (1) word.
EXAMPLE: “City of Los Angeles” = 1 word
“City and County of San Francisco” = 1 word
4. **ABBREVIATIONS** such as acronyms or abbreviations for a word, phrase, or expression are counted as one (1) word.
EXAMPLE: UCLA, PTA, USMC, LAPD, U.S.M.C.
5. **HYPHENATED WORDS** that appear in any generally available standard reference dictionary published in the U.S. at any time within the last 10 calendar years immediately preceding the election are counted as one (1) word.
EXAMPLE: Attorney-at-law
6. **DATES...** consisting of a combination of digits are counted as one (1) word.
EXAMPLE: 3/18 7/21/89
DATES... consisting of a combination of words and digits are counted as two (2) words.
EXAMPLE: July 21, 1983 18 June, 1987
7. **NUMERIC COMBINATIONS** are counted as one (1) word.
EXAMPLE: 1973 13 1/2 1971-73 5% 8/3/73 #14
8. **MONETARY AMOUNTS** consisting of a combination of digits are counted as one (1) word.
EXAMPLE: \$1,000.00
MONETARY AMOUNTS consisting of a combination of words and digits are counted as two (2) words.
EXAMPLE: \$4 million
9. **NAMES OF PERSONS AND THINGS** are counted as individual words.
EXAMPLE: Gus Enwright (2 words)
 L. A. Basketball Team (3 words)
10. **TELEPHONE/FAX NUMBERS** are counted as one (1) word.
EXAMPLE: 1-800-815-2666 1-562-462-2317
11. **INTERNET WEB SITES/E-MAIL ADDRESSES** are counted as one (1) word.
EXAMPLE: <http://www.co.la.ca.us> www.lavote.net <http://www.lacounty.info>

Chapter 5

Write-In Candidates

<p>GENERAL INFORMATION FOR WRITE-IN CANDIDATES</p>

(Election Code §§ 8600 & 8601)

A person who has not followed the usual procedure for placing his or her name on the ballot for the election may still be elected to office as a Write-in Candidate.

NOTE: There is no party affiliation requirement for signers of write-in nomination petitions in the general election. Circulators shall be voters in the district or political subdivision in which the candidate is seeking election if running for a district office. Circulators shall be registered voters in California if the candidate is seeking statewide office. The candidate does not have to be registered with any qualified political party. He or she must be registered to vote in California.

NOMINATION PAPERS – The required number of signers to a write-in candidate’s nomination paper for the respective offices are as follows:

Member of House of Representatives, State Legislative Office (State Senator and Member of the Assembly) not fewer than 40 no more than 60. (E.S. §§ 8062, 8600)

A Write-in Candidate **is not required** to pay a filing fee.

FILING DEADLINE		
SEPT. 8 (Mon) Through OCT. 21 (Tu) 5:00 P.M.	E- 57 - 14	FIRST & LAST DAY TO FILE STATEMENT OF WRITE-IN CANDIDACY (Excluding Presidential Electors)
OCT. 21 (Tu)	E- 14	LAST DAY FOR PRESIDENTIAL WRITE-IN CANDIDATES

The Write-In candidacy forms must be filed with the Registrar-Recorder/County Clerk **NO LATER THAN 5 P.M. ON THE 14th DAY** prior to the election.

All candidates are urged to file the following documents as early as possible.

STATEMENT OF WRITE-IN CANDIDACY – Refer to the General Information for Nomination of Candidates in Chapter 3 of Section 1 of this handbook.

CANDIDATE CAMPAIGN STATEMENT FORMS – If you have any questions regarding the completion of this form, contact the Campaign Finance and Disclosure Section at (562) 462-2339.

ELECTION RESULTS FOR WRITE-IN CANDIDATES

Write-in election results are not determined until the canvass is completed. California election law allows a prescribed number of days for the conduct of the official canvass. During the official canvass, write-in ballots must be individually reviewed to determine if the write-in vote is for a qualified/unqualified write-in candidate and whether a voter has over voted. All aspects of the canvass shall be open to the public. **Write-in votes are counted and certified in an election only if qualified candidates have filed the required nomination documents with the elections official.**

OFFICES OMITTED FROM BALLOT – Prospective write-in candidates should note that write-in candidacy is possible only if the office appears on the ballot. When Judicial, School and UDEL contests are involved, if the number of persons qualifying for the ballot does not exceed the number of offices to be filled, the election is cancelled and eligible candidates are appointed in lieu of the election. California Law however, provides that for such offices a petition indicating that a write-in campaign will be conducted must have been filed with the elections official to require the office(s) be placed on the ballot by means of a petition drive.

(E. C. §§ 8203 and 10515; Ed. Code § 5326)

NAME DOES NOT APPEAR ON BALLOT – The candidate's name does not appear on the official ballot. The candidate is not entitled to a candidate statement in the sample ballot pamphlet.

(E. C. § 302)

WRITE-IN CANDIDATES TO BE ELECTED

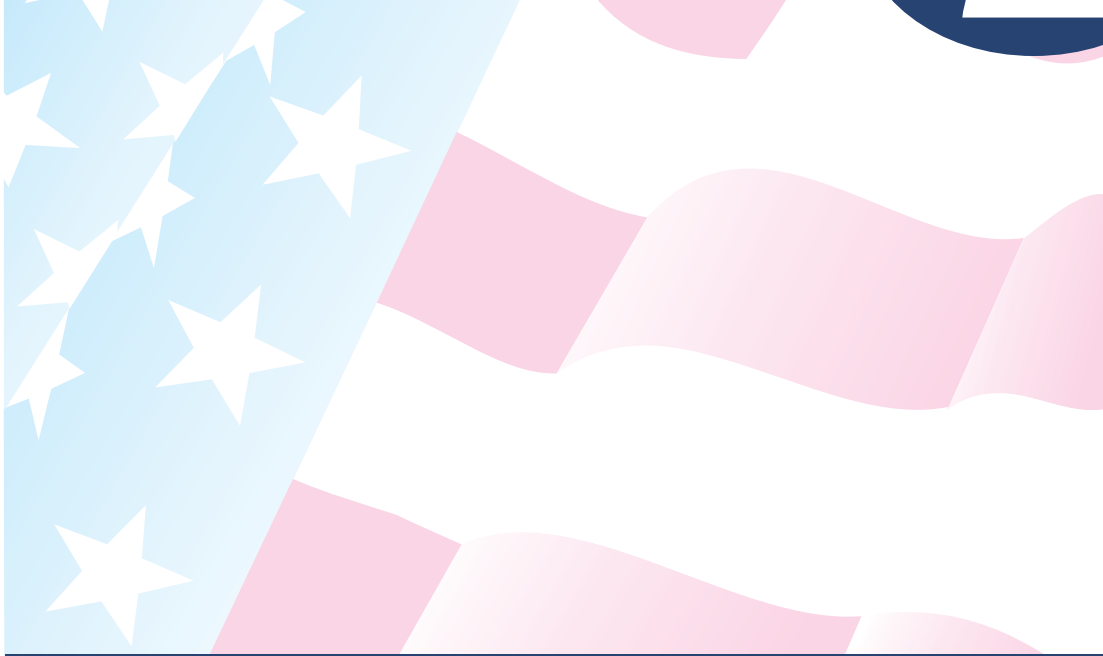
TO BE ELECTED – In order for a candidate, including a write-in candidate, to win election to a judicial or county office, the candidate must receive a majority of the ballots cast for candidates for that office. In order for a candidate, including a write-in candidate, to be nominated to a judicial or county office at the general election, the candidate must be one of the two top vote getters at the primary election.

(E. C. §§ 8140, 8141, 15451, and 15490)

A write-in candidate for a school district governing board member or special district board of director member contest must receive more votes than any other candidate running for that office. When more than one office is to be filled, those candidates, including qualified write-in candidates, who receive the highest number of votes equal to the number of offices to be filled are elected.

Section

2



**RESOURCE
GUIDE**

TABLE OF CONTENTS

Section **2** Resource Guide

CHAPTER 1: CONTACT INFORMATION	1-6
Registrar-Recorder/County Clerk (RR/CC).....	1 & 2
Information Available on RR/CC web site.....	3
Counties with Shared Districts.....	4
California Secretary of State.....	4
Fair Political Practices Commission (FPPC).....	5
Federal Election Commission (FEC)	5
U.S. Election Assistance Commission (EAC).....	5
California Attorney General	5
Los Angeles District Attorney	5
To Report Election Violation	6
CHAPTER 2: FINANCIAL REPORTING	7-11
Campaign Statement Filing Requirements	7
Campaign Disclosure Forms	8
Who, Where and What to File	9
Filing Officers (Addresses & Phone Numbers)	10
Review of Reporting Requirements.....	11
CHAPTER 3: CAMPAIGNING	12-29
General Campaign Information	12-27
Fee Schedule	28-29
CHAPTER 4: MULTILINGUAL VOTING SERVICES	30-32
Overview of Multilingual (ML) Voting Services	30
Transliteration of Candidate’s Names.....	31
Transliteration Form	32

CHAPTER 5: ELECTION DAY	33-41
InkaVote Plus	33
Help America Vote Act (HAVA)	34
Polling Places and Pollworkers	34-36
Bilingual Pollworkers	36 & 37
Neighborhood Voting Center (NVC's).....	38
Election Day Services for Voters with Special Needs.....	38
A Guide for Poll Watchers	39-41
CHAPTER 6: ELECTION RESULTS	42-47
Tabulation of Election Results	42
Canvass/Certification.....	43
Statement of Votes Cast.....	43
Election Contest	43
Document Retention.....	43
Requesting a Recount.....	44-47
Automatic Public Manual Tally	47
CHAPTER 7: FAQ'S	48-49
Frequently Asked Questions	48-49

Chapter 1

CONTACT INFORMATION

CONTACT INFORMATION



REGISTRAR-RECORDER/COUNTY CLERK (RR/CC)

OFFICE HOURS:

8 a.m. - 5 p.m.
Monday-Friday
(Except for Holidays)

OFFICE ADDRESS:

12400 Imperial Highway
Norwalk, CA 90650
FAX: (562) 462-3030

MAILING ADDRESS:

P.O. Box 1024
Norwalk, CA 90651-1024

TDD (Telecommunications Device for the Deaf)(562) 462-2259

ELECTION INFORMATION.....(562) 466-1310

2nd Floor, Room 2013

General information on election, registration and voter services.

CANDIDATE NOMINATION PROCEDURES.....(562) 462-2317

2nd Floor, Room 2013

Information regarding election dates, offices to be filled, qualifications for office, nomination filing dates and procedures.

CAMPAIGN FINANCE DISCLOSURE (562) 462-2339

2nd Floor, Room 2003

Campaign finance filing requirements for candidates, committees and officeholders.

REGISTERING TO VOTE.....(562) 466-1310

Register to vote during regular office hours from 8:00 a.m. to 5:00 p.m. After hours, call (562) 462-2260 to leave a recorded message to request a voter registration form to be mailed. **Note:** The registration deadline for the **November 4th General Election** is on **October 20, 2008**.

CONTACT INFORMATION (Cont'd)



SAMPLE/VOTE BY MAIL BALLOT INQUIRIES(562) 466-1323

SAMPLE BALLOT TRANSLATION(800) 481-8683

To receive a Sample Ballot booklet translated into Chinese, Japanese, Korean, Spanish, Tagalog/Filipino or Vietnamese.

PRECINCT POLLWORKERS/POLLS.....(562) 466-1373

To become a pollworker, offer a home as a polling place or report problems at a polling place on Election Day.

HOURLY VOTER TURNOUT INFORMATION(562) 462-2726

Projected turnout reports based on phone calls to Sample Precincts (for media use) will be issued each hour on the half-hour from 8:30 a.m. to 8:30 p.m. on Election Day.

SEMI-OFFICIAL ELECTION RESULTS(562) 466-1323

Preliminary vote by mail voting results will be available at approximately 8:30 p.m. Election Night. As ballots arrive from the precincts and are tabulated, results will be available approximately every 20 minutes until all voting precincts have reported. ***Election results will be continuously updated and displayed on the Internet on Election Night at www.lavote.net.***

SEMI-OFFICIAL RESULTS INFORMATION(562) 466-1310

Available Wednesday, **November 5, 2008.**

VOTER FRAUD HOT LINE.....(800) 815-2666

To report factual information on illegal voter registration and/or voting activities. **(Press 6 in the option menu.)**

INFORMATION AVAILABLE ON RR/CC WEB SITE



The RR/CC web site has a wealth of information for voters, candidates, media and community activists. Information available on www.lavote.net:

- Voter Registration Information
- Vote by Mail Information
- Polling Place Look-up
- “My Districts” Look-up
- RR/CC Strategic Plan
- Campaign finance disclosures for County Board of Supervisors, Assessor, District Attorney, Sheriff and County Measures
- Multilingual Voter Services
- Services for Voters with Disabilities
- Candidate Registration and Qualification (CRQ) form
- List of Candidates Who Have Filed (Posted and updated daily during the Filing Period.)
- Candidate Handbook for Upcoming Election
- Election Results



COUNTIES WITH SHARED DISTRICTS

The following is a list of the registrar of voters offices in counties that share districts with Los Angeles County.

ORANGE COUNTY

1300 S. Grand Ave., Bldg C
Santa Ana, CA 92705
(714) 567-7600
Fax: (714) 567-7556

VENTURA COUNTY

800 S. Victoria Ave., L-1200
Ventura, CA 93009
(805) 654-2664
Fax: (805) 648-9200

MONO COUNTY

P.O. Box 237
Bridgeport, CA 93517
(760) 932-5530

SAN BERNARDINO COUNTY

777 E. Rialto Ave.
San Bernardino, CA 92415
(909) 387-8300
(800) 881-8683
Fax: (909) 387-2022

KERN COUNTY

1115 Truxtun Ave.
Bakersfield, CA 93301
(661) 868-3590
(800) 452-8683
Fax: (661) 868-3768

INYO COUNTY

P.O. Box Drawer F
Independence, CA 93526
(760) 878-0220

SAN LUIS OBISPO COUNTY

1055 Monterey Street
San Luis Obispo, CA 93408
(805) 781-5080

CALIFORNIA SECRETARY OF STATE

POLITICAL REFORM DIVISION

1500 11th Street, Room 495
Sacramento, CA 95814
(916) 653-6224
Fax: (916) 653-5045

ELECTIONS DIVISION

1500 11th Street, 5th Floor
Sacramento, CA 95814
(916) 657-2166
Fax: (916) 653-3214

TDD: 1-800-833-8683
Web: www.elections@sos.ca.gov

FAIR POLITICAL PRACTICES COMMISSION* (FPPC)

Advice / Assistance

428 J Street, Suite 620
Sacramento, CA 95814

(866) 275-3772
(916) 322-5660
Fax: (916) 322-0886
Web: www.fppc.ca.gov

Enforcement Division (To report violations).....(800) 561-1861

FEDERAL ELECTION COMMISSION ** (FEC)

999 E. St. N.W.
Washington, D.C. 20463
(800) 424-9530
TDD (202) 219-3336
Web: www.fec.gov

U. S. ELECTION ASSISTANCE COMMISSION (EAC)

1225 New York Avenue N.W., Suite 1100
Washington, D.C. 20005
(202) 566-3100
(866) 747-1471
Fax: (202) 566-3127
Web: www.eac.gov

CALIFORNIA STATE ATTORNEY GENERAL

1300 I St., #125
Sacramento, CA 95814
(916) 445-9555

Or

300 S. Spring St., Suite 1700
Los Angeles, CA 90013
(213) 897-2000

LOS ANGELES COUNTY DISTRICT ATTORNEY

Criminal Courts Building
210 W. Temple St., Room 18-709
Los Angeles, CA 90012
(213) 974-3501

*Non-Federal Candidates

**Federal Candidates

TO REPORT ELECTION VIOLATION

NOTE: The RR/CC's office is NOT an enforcement agency and is therefore unable to investigate any violations. When our office receives reports of violations, we refer them to the agencies listed below:

VIOLATION OF:	REFERRED TO:
False or misleading campaign materials	There is no agency enforcement. These issues are dealt with in court.
The Political Reform Act (Title 9 of California Government Code at Sections 81000 through 91015), i.e. mass mailing requirements; slate mailers; campaign disclosure; proper use of campaign funds; disclosure of economic interests	Fair Political Practices Commission (FPPC) (866) 275-3772
Election procedures	County District Attorney (213) 974-3501 California Secretary of State, Elections Division (916) 657-2166
Unlawful use of public funds, violation of the Elections Code, the Penal Code, or any laws other than the Political Reform Act	County District Attorney (213) 974-3501 California State Attorney General (916) 445-9555
Open meeting laws (Brown Act)	County District Attorney (213) 974-3501 California State Attorney General (916) 445-9555
Local ordinances	Local City Attorney or County District Attorney (213) 974-3501
Vandalism or requirements concerning campaign signs	Local City Attorney or County District Attorney (213) 974-3501

On ELECTION DAY, if you or your campaign workers observe problems at the polls that need attention, please contact our office at (562) 462-2512 so that we have the opportunity to immediately look into the problem and make necessary corrections before more voters are affected.

Chapter 2

FINANCIAL REPORTING

**CAMPAIGN FILING REQUIREMENTS FOR CANDIDATES AND CONTROLLED
COMMITTEES PARTICIPATING IN THE NOVEMBER 4, 2008
GENERAL ELECTION**

All candidates/committees are required by the Political Reform Act to meet the first campaign statement filing deadline regardless of activity. The period covered by any statement begins on the day after the closing date of the last statement or January 1 if no previous statement has been submitted. Monetary penalties may be assessed for failure to file required statements.

FILING DEADLINES	2008 FILING REQUIREMENTS
OCT. 6, 2008¹	<p><u>FIRST CAMPAIGN STATEMENT</u> Candidates who have a controlled committee and committee primarily formed to support or oppose candidates or measures in this election at this time file a Form 460 to cover the period between January 1 and September 30, 2008. All other candidates who do not raise over one thousand dollars (\$1,000) file a Form 470. All reports must be received by personal delivery or first class mail. (Gov. Code § 84200.7)</p>
OCT. 23, 2008	<p><u>SECOND CAMPAIGN STATEMENT</u> The reporting requirements mentioned above apply to statements for the period between October 1 and October 18, 2008. All reports must be filed by personal delivery or guaranteed overnight service. (Gov. Code § 84200.7)</p>
WITHIN 24 HOURS BETWEEN OCT. 19 (Sun) AND NOV. 3 (Mon)	<p><u>LATE CONTRIBUTION AND/OR LATE INDEPENDENT EXPENDITURE REPORTS</u> Each candidate or committee that makes or receives a contribution (including a loan) of one thousand dollars (\$1,000) or more, or makes an independent expenditure of one thousand dollars (\$1,000) or more between October 19 and the election, must be filed by fax, guaranteed overnight delivery service or personal delivery within 24 hours. Regular mail may not be used. (Gov. Code §§ 84203 & 84204)</p>
FEB. 2, 2009¹	<p><u>SEMI-ANNUAL CAMPAIGN STATEMENT</u> Same requirements as above for the period between October 19, 2008 and December 31, 2008. (Gov. Code § 84200)</p>

¹ Because the October 5, 2008 deadline falls on Sunday, and January 31, 2009 deadline falls on Saturday, these filing deadlines are extended to October 6, 2008 and February 2, 2009.

CAMPAIGN DISCLOSURE FORMS

FORM 501

Candidates who **intend** to receive contributions from others for their campaign, must file a Candidate Intention Statement, Form 501. **(Gov. Code § 85200)**

FORM 470

Candidates who **anticipate** receiving less than one thousand dollars (\$1,000) in contributions and spending less than one thousand dollars (\$1,000) during the entire calendar year, exclusive of the cost of a candidate statement, if paid from personal funds, may reduce their filing obligation by filing a Form 470, Candidate and Officeholder Campaign Statement Short Form by **October 6, 2008**. No further statements need be filed for this election **unless** the one thousand dollars (\$1,000) threshold is reached.

Candidates who have filed a Form 470 and **thereafter** receive contributions or make expenditures totaling one thousand dollars (\$1,000) or more **are** required to file a 470 Supplement with 1) Secretary of State 2) the local filing officer and 3) each candidate contending for the same office. The notice must be sent **within 48 hours** of receiving or expending the one thousand dollars (\$1,000). **(Gov. Code § 84206)**

FORM 410

Recipient committees, including any group, individual or candidate, that receive one thousand dollars (\$1,000) or more in contributions during a calendar year must file with the Secretary of State and the local filing officer a Statement of Organization, Form 410, within 10 days of receiving the contributions. **(Gov. Code § 84101)**

FORM 460

A candidate or officeholder who has a controlled committee, or who has raised or spent or will raise or spend one thousand dollars (\$1,000) or more during a calendar year in connection with the election, is required to file the recipient committee campaign statement Form 460. The Form 460 is also required if one thousand dollars (\$1,000) or more will be raised or spent during the calendar year at the behest of the officeholder or candidate. **(Gov. Code §§ 84200-84216.5)**

FORM 497

A Late Contribution is a monetary or non-monetary contribution, including a loan, totaling one thousand dollars (\$1,000) or more from a single source and is made or received during the 16 days immediately preceding the election in which the recipient candidate is to be voted on. **(Gov. Code § 82036)**

WHO, WHERE AND WHAT TO FILE

This is an overview of where candidates must file their campaign statements. Detailed instructions for complying with the Political Reform Act are in each candidate's **Campaign Finance Disclosure Packet**.

Candidates for **State Senate, State Assembly, Superior Court Judges** and their controlled committees.

- **Secretary of State** (original)
- **County of Los Angeles** (1 copy)
- **County of Domicile*** (1 copy)
(or county with the largest number of registered voters in shared districts)
 - ♦ Form 501
 - ♦ Form 470
 - ♦ Form 410
 - ♦ Form 460
 - ♦ Form 497

♦ Candidates and their controlled committees for local **School Board, Health Care, Water Districts, Water Replenishment and Recreation** and **Park Districts**.

- ♦ **County of Los Angeles** (original)
 - ♦ Form 501
 - ♦ Form 470
 - ♦ Form 410 (Original with the Secretary of State)
 - ♦ Form 460
 - ♦ Form 497

Federal Offices

United States Senator

Representative in Congress

Federal disclosure requirements through the **Federal Election Commission**.

* A committee's domicile is at the address listed on its campaign statement.

FILING OFFICERS

<p>Secretary of State Political Reform Division 1500 11th Street, Room 495 Sacramento, CA 95814 Phone (916) 653-6224 Fax: (916) 653-5054</p>	<p>Los Angeles County Registrar-Recorder/County Clerk Campaign Finance Disclosure Section 12400 Imperial Highway, Room 2003 Norwalk, CA 90650 Phone: (562) 462-2339 Fax 1: (562) 651-2548 Fax 2: (562) 406-2149</p>
<p>Department of Elections City and County of San Francisco Campaign Statements 1 Dr. Carlton B. Goodlett Place, City Hall - Room 48 San Francisco, CA 94102 Phone (415) 554-4375 Fax (415) 554-7344</p>	<p>Federal Offices Federal Election Commission 999 E Street, NW Washington D.C. 20463 (800) 424-9530</p>

REVIEW OF REPORTING REQUIREMENTS
Campaign Disclosure Filing Requirements for ALL
Candidates and Committees

PLEASE READ CAREFULLY....

The Political Reform Act imposes certain duties and obligations on candidates, officeholders, committee treasurers and others participating in the political process. For example:

- Detailed records must be maintained for all financial activity; and contributions received for political purposes must not be commingled with personal funds.
- Campaign statements must be filed at specified times disclosing contributions received, expenditures made and other financial information. In some cases, candidates can avoid filing campaign statements by submitting a “Candidate and Officeholder Campaign Statement Short Form (Form 470).”
- Campaign statements must be hand delivered or postmarked as first-class mail by the legal filing deadline date established by law. NOTE: The **second pre-election statement** must be filed in person or guaranteed overnight delivery. Mail, which is not received by the filing officer, shall be presumed not to have been sent unless the filer possesses a postal receipt establishing the date of the deposit, and the name and address of the addressee.
- The Political Reform Act provides a formula for assessing late fines of original campaign statements filed in our office. The fine is \$10 per day, starting the day after the filing deadline, until the statement is filed; however, no liability may exceed the cumulative amount of reported contributions or expenditures, of \$100, whichever is greater.

The failure to submit a required statement is a misdemeanor. Persons who fail to submit required statements are referred to the Fair Political Practices Commission.

DEFEATED CANDIDATES

Must file campaign disclosure reports until:

- ✓ **Campaign committee has been terminated Form 410 (see Part 5)**

It is recommended that campaign disclosure statements be mailed by certified mail or by purchasing a certificate of mailing. This will eliminate any question regarding receipt of your statement.

Unsigned forms are incomplete and are not considered filed until they are signed.

Chapter 3

CAMPAIGNING

GENERAL CAMPAIGN INFORMATION

- PART 1 - **LEGISLATIVE INTENT.**
Chapter 976, 1977 Legislation.
- PART 2 - **MASS MAILINGS.**
Government Code §§ 82041.5, 84305 and 89001.
- PART 3 - **TRUTH IN ENDORSEMENTS LAW.**
Elections Code §§ 20000 – 20010.
- PART 4 - **PRINTING OF SIMULATED SAMPLE BALLOTS.**
Elections Code § 18301.
- PART 5 - **DISTRIBUTION OF PRECINCT POLLING PLACE INFORMATION**
Elections Code § 18302.
- PART 6 - **ELECTIONEERING/INTIMIDATION OF VOTERS/POSSESSION OF FIREARMS AT POLLING PLACE.**
Elections Code §§ 18370, 18371, 18540, 18541, 18544, 18545 and 18546.
- PART 7 - **SOLICITATION OF FUNDS.**
Elections Code §§ 20202 and 20203.
- PART 8 - **OUTDOOR ADVERTISING: POLITICAL SIGNS.**
Business and Professions Code § 5405.3.
- PART 9 - **U.S. POSTAL SERVICE – POLITICAL MAILINGS.**
- PART 10 - **INFORMATION FOR INDIVIDUALS, GROUPS AND ORGANIZATIONS DISTRIBUTING APPLICATIONS FOR VOTE BY MAIL BALLOTS.**
- PART 11 - **INFORMATION ON FEDERAL LAW PROHIBITING FOREIGN NATIONALS FROM MAKING CONTRIBUTIONS OR EXPENDITURES.**

PART 1

LEGISLATIVE INTENT. CHAPTER 976, 1977 STATUTES.

The Legislature finds and declares:

(a) That a need exists for adequate identification of the source of campaign appeals directed at the voters in order to assist them in making rational decisions at the polls.

(b) That by requiring such identification of campaign literature, the public is better able to evaluate the source of campaign material, may be more adequately informed, and can better distinguish between truth and falsity.

(c) That by requiring identification, anonymous attacks, which cannot adequately be responded to in the heat of a campaign, will be discouraged.

(d) That by requiring identification, a candidate who believes he or she has been libeled may more readily seek redress in a civil action for damages.

(e) That limiting identification requirements to pejorative campaign material is inadequate because subtle attacks on candidates or measures can be framed which appear to be supportive but, in fact, are pejorative.

(f) That a distinction needs to be made between campaign materials of small size that usually carry little more than a "Vote for _____" message, such as is often the case with buttons, matchbooks, pens, and the like, on the one hand, and campaign materials which carry more complex messages, on the other. In the case of the former, because of their characteristically small size and limited content, it would be an undue burden to require that identification as to source be included.

PART 2

MASS MAILINGS

Definition.

"Mass mailing" means over two hundred substantially similar pieces of mail, but does not include a form letter or other mail which is sent in response to an unsolicited request, letter or other inquiry.

Gov. Code § 82041.5

Manner of sending mass mailings.

- (a) Except as provided in subdivision (b), no candidate or committee shall send a mass mailing unless the name, street address, and city of the candidate or committee are shown on the outside of each piece of mail in the mass mailing and on at least one of the inserts included within each piece of such mailing in no less than 6-point type. A post office box may be stated in lieu of a street address if the organization's address is a matter of public record with the Secretary of State.

GENERAL CAMPAIGN INFORMATION (Cont'd)

(b) If the sender of the mass mailing is a single candidate or committee, the name, street address, and city of the candidate or committee need only be shown on the outside of each piece of mail.

(c) If the sender of a mass mailing is a controlled committee, the name of the person controlling the committee shall be included in addition to the information required by subdivision (a). **Gov. Code § 84305**

Newsletter or mass mailing.

No newsletter or other mass mailing shall be sent at public expense. **Gov. Code § 89001**

PART 3

TRUTH IN ENDORSEMENTS LAW

Legislature's findings.

The Legislature hereby finds the following to be true:

(1) The major political parties have become an integral part of the American governmental system requiring regulation as to their structure, governing bodies, and functions by state government in the public interest.

(2) The Legislature has found it necessary and appropriate in the regulation of political parties to create and provide for the convening of state conventions, state central committees, and county central committees for parties qualified by law to participate in the direct primary election, by statute.

(3) Over the several years preceding the adoption of this section organizations of electors using as a part of their names the name of a political party qualified to participate in the direct primary election have endorsed candidates for nomination of that party for partisan office in the direct primary election and have publicized and promulgated such endorsements in a manner which has resulted in considerable public doubt and confusion as to whether such endorsements are those of a private group of citizens or of an official governing body of a political party.

(4) The voting public is entitled to protection by law from deception in political campaigns in the same manner and for the same reasons that it is entitled to protection from deception by advertisers of commercial products. **E. C. § 20001**

Restraining order or injunction.

The superior court, in any case brought before it by any registered voter, may issue a temporary or permanent restraining order or injunction against the publication, printing, circulation, posting, broadcasting, or telecasting of any matter in violation of this chapter, and all cases of this nature shall be in a preferred position for purposes of trial and appeal, so as to assure the speedy disposition thereof. **E. C. § 20006**

Representation requirements.

No candidate or committee in his or her behalf shall represent in connection with an election campaign, either orally or in campaign material, that the candidate has the support of a committee or organization which includes as part of its name the name or any variation upon the name of a qualified political party with which the candidate is not affiliated, together with the words "county committee," "central committee," "county," or any other term that might tend to mislead the voters into believing that the candidate has the support of the party's county central committee or state central committee, when that is not the case.

This section shall not be construed to prevent a candidate or committee from representing that the candidate has the support of a committee or group of voters affiliated with another political party, which committee or group is identified by the name of that party, where the name of the committee or group also includes the name of the candidate.

Any member of a county central committee or state central committee may commence an action in the superior court to enjoin misrepresentation by a candidate or committee in his behalf, in the manner prohibited by this section, to the effect that the candidate has the support of the state or county central committee involved.

E. C. § 20007

Political advertisement requirements.

Any paid political advertisement that refers to an election or to any candidate for state or local elective office and that is contained in or distributed with a newspaper, shall bear on each surface or page thereof, in type or lettering at least half as large as the type or lettering of the advertisement or in 10-point roman type, whichever is larger, the words "Paid Political Advertisement." The words shall be set apart from any other printed matter.

As used in this section "paid political advertisement" shall mean and shall be limited to, published statements paid for by advertisers for purposes of supporting or defeating any person who has filed for an elective state or local office. **E. C. § 20008**

Simulated ballot requirements.

(a) Every simulated ballot or simulated sample ballot shall bear on each surface or page thereof, in type or lettering at least half as large as the type or lettering of such statement or words or in 10-point roman type, whichever is larger, in a printed or drawn box and set apart from any other printed matter, the following statement:

<p style="text-align: center;">"NOTICE TO VOTERS" (Required by Law)</p> <p>"This is not an official ballot or an official sample ballot prepared by the county elections official or the Secretary of State."</p> <p>"This is an unofficial, marked ballot prepared by _____ (insert name and address of the person or organization responsible for preparation thereof)."</p>
--

GENERAL CAMPAIGN INFORMATION (Cont'd)

Nothing in this section shall be construed to require this notice in any editorial or other statement appearing in a regularly published newspaper or magazine other than a paid political advertisement.

(b) No simulated ballot or simulated sample ballot referred to in subdivision (a) shall bear any official seal or the insignia of any public entity, nor shall that seal or insignia appear upon the envelope in which it is mailed or otherwise delivered.

(c) The superior court, in any case brought before it by any registered voter, may issue a temporary or permanent restraining order or injunction against the publication, printing, circulation, posting, or distribution of any matter in violation of this section, and all cases of this nature shall be in a preferred position for purposes of trial and appeal, so as to assure the speedy disposition thereof. **E. C. § 20009**

No pictures of candidates in campaign material.

(a) Except as provided in subdivision (b) no person, firm, association, corporation, campaign committee, or organization may, with actual malice, produce, distribute, publish, or broadcast campaign material that contains (1) a picture or photograph of a person or persons into which the image of a candidate for public office is superimposed or (2) a picture or photograph of a candidate for public office into which the image of another person or persons is superimposed. "Campaign material" includes, but is not limited to, any printed matter, advertisement in a newspaper or other periodical, television commercial, or computer image. For purposes of this section, "actual malice" means the knowledge that the image of a person has been superimposed on a picture or photograph to create a false representation, or a reckless disregard of whether or not the image of a person has been superimposed on a picture or photograph to create a false representation.

(b) A person, firm, association, corporation, campaign committee, or organization may produce, distribute, publish, or broadcast campaign material that contains a picture or photograph prohibited by subdivision (a) only if each picture or photograph in the campaign material includes the following statement in the same point size type as the largest point size type used elsewhere in the campaign material: "This picture is not an accurate representation of fact." The statement shall be immediately adjacent to each picture or photograph prohibited by subdivision (a).

(c) (1) Any registered voter may seek a temporary restraining order and an injunction prohibiting the publication, distribution, or broadcasting of any campaign material in violation of this section. Upon filing a petition under this section, the plaintiff may obtain a temporary restraining order in accordance with Section 527 of the Code of Civil Procedure.

GENERAL CAMPAIGN INFORMATION (Cont'd)

(2) A candidate for public office whose likeness appears in a picture or photograph prohibited by subdivision (a) may bring a civil action against any person, firm, association, corporation, campaign committee, or organization that produced, distributed, published, or broadcast the picture or photograph prohibited by subdivision (a). The court may award damages in an amount equal to the cost of producing, distributing, publishing, or broadcasting the campaign material that violated this section, in addition to reasonable attorney's fees and costs.

(a) (1) This act shall not apply to a holder of a license granted pursuant to the Federal Communications Act of 1934 (47 U.S.C. § 151 et seq.) in the performance of the functions for which the license is granted.

(2) This act shall not apply to the publisher or an employee of a newspaper, magazine, or other periodical that is published on a regular basis for any material published in that newspaper, magazine, or other periodical. For purposes of this subdivision, a "newspaper, magazine, or other periodical that is published on a regular basis" shall not include any newspaper, magazine, or other periodical that has as its primary purpose the publication of campaign advertising or communication, as defined by Section 304.

E. C. § 20010

PART 4

PRINTING OF SIMULATED SAMPLE BALLOTS

In addition to any other penalty, any person who prints or otherwise duplicates, or causes to be printed or duplicated, a simulated ballot or simulated sample ballot that does not contain the statement required by Section 20009 or that uses an official seal or insignia in violation thereof, is guilty of a misdemeanor.

E. C. § 18301

PART 5

DISTRIBUTION OF PRECINCT POLLING PLACE INFORMATION

Every person is guilty of a misdemeanor who knowingly causes to be mailed or distributed, or knowingly mails or distributes, literature to any voter which includes a designation of the voter's precinct polling place other than a precinct polling place listed for that voter in an official precinct polling list that constituted the latest official precinct polling list at sometime not more than 30 days prior to such mailing or distribution.

E. C. § 18302

PART 6

**ELECTIONEERING/INTIMIDATION OF VOTERS:
POSSESSION OF FIREARMS AT POLLING PLACES.**

Legislature's findings.

The Legislature finds and declares that no person, other than the voter and the election official, should have access to, or possession of, the ballot except as permitted by the Federal Voting Rights Act of 1965, as amended.

Electioneering within 100 feet of a polling place.

No person, on election day, or at any time that a voter might be casting a ballot, shall within 100 feet of a polling place or an elections official's office:

- (a) Circulate an initiative, referendum, recall, or nomination petition or any other petition.
- (b) Solicit a vote or speak to a voter on the subject of marking his or her ballot.
- (c) Place a sign relating to voters' qualifications or speak to a voter on the subject of his or her qualifications except as provided in Section 14240.
- (d) Do any electioneering.

As used in this section "100 feet of a polling place or an elections official's office" means a distance of 100 feet from the room or rooms in which voters are signing the roster and casting ballots.

Any person who violates any of the provisions of this section is guilty of a misdemeanor.

E. C. § 18370

Electioneering during vote by mail voting.

(a) No candidate or representative of a candidate, and no proponent, opponent, or representative of a proponent or opponent, of an initiative, referendum, or recall measure, or of a charter amendment, shall solicit the vote of a vote by mail voter, or do any electioneering, while in the residence or in the immediate presence of the voter, and during the time he or she knows the vote by mail voter is voting.

(b) Any person who knowingly violates this section is guilty of a misdemeanor.

(c) This section shall not be construed to conflict with any provision of the Federal Voting Rights Act of 1965, as amended, nor to preclude electioneering by mail or telephone or in public places, except as prohibited by Section 18370, or by any other provision of law.

E. C. § 18371

GENERAL CAMPAIGN INFORMATION (Cont'd)

Compelling another in voting.

(a) Every person who makes use of or threatens to make use of any force, violence, or tactic of coercion or intimidation, to induce or compel any other person to vote or refrain from voting at any election or to vote or refrain from voting for any particular person or measure at any election, or because any person voted or refrained from voting at any election or voted or refrained from voting for any particular person or measure at any election is guilty of a felony punishable by imprisonment in the state prison for 16 months or two or three years.

(b) Every person who hires or arranges for any other person to make use of or threaten to make use of any force, violence, or tactic of coercion or intimidation, to induce or compel any other person to vote or refrain from voting at any election or to vote or refrain from voting for any particular person or measure at any election, or because any person voted or refrained from voting at any election or voted or refrained from voting for any particular person or measure at any election is guilty of a felony punishable by imprisonment in state prison for 16 months or two or three years.

E. C. § 18540

Solicitation dissuading persons from voting.

(a) No person shall, with the intent of dissuading another person from voting, within 100 feet of a polling place:

(1) Solicit a vote or speak to a voter on the subject of marking his or her ballot.

(2) Place a sign relating to voters qualifications or speak to a voter on the subject of his or her qualifications except as provided in Section 14240.

(3) Photograph, videotape, or otherwise record a voter entering or exiting a polling place.

(b) Any person who violates this section is punishable by imprisonment in the county jail for not more than 12 months, or in the state prison. Any person who conspires to violate this section is guilty of a felony.

(c) For purposes of this section, 100 feet means a distance of 100 feet from the room or rooms in which voters are signing the roster and casting ballots. **E. C. § 18541**

Fine for person in possession of firearm or unauthorized uniformed personnel.

(a) Any person in possession of a firearm or any uniformed peace officer, private guard, or security personnel or any person who is wearing a uniform of a peace officer, guard, or security personnel, who is stationed in the immediate vicinity of, or posted at, a polling place without written authorization of the appropriate city or county elections official is punishable by a fine not exceeding ten thousand dollars (\$10,000), by imprisonment in the state prison for 16 months or two or three years or in a county jail not exceeding one year, or by both the fine and imprisonment.

(b) This section shall not apply to any of the following:

(1) An unarmed uniformed guard or security personnel who is at the polling place to cast his or her vote.

GENERAL CAMPAIGN INFORMATION (Cont'd)

(2) A peace officer who is conducting official business in the course of his or her public employment or who is at the polling place to cast his or her vote.

(3) A private guard or security personnel hired or arranged for by a city or county elections official.

(4) A private guard or security personnel hired or arranged for by the owner or manager of the facility or property in which the polling place is located if the guard or security personnel is not hired or arranged solely for the day on which an election is held.

E. C. § 18544

Fine for hiring of person in possession of firearm or uniformed personnel.

Any person who hires or arranges for any other person in possession of a firearm or any uniformed peace officer, private guard, or security personnel or any person who is wearing a uniform of a peace officer, guard, or security personnel, to be stationed in the immediate vicinity of, or posted at, a polling place without written authorization of the appropriate elections official is punishable by a fine not exceeding ten thousand dollars (\$10,000), by imprisonment in the state prison for 16 months or two or three years or in a county jail not exceeding one year, or by both the fine and imprisonment. This section shall not apply to the owner or manager of the facility or property in which the polling place is located if the private guard or security personnel is not hired or arranged solely for the day on which the election is held.

E. C. § 18545

Definitions.

As used in this article:

(a) "Elections official" means county elections official, registrar of voters, or city clerk.

(b) "Immediate vicinity" means the area within a distance of 100 feet from the room or rooms in which the voters are signing the roster and casting ballots. **E. C. § 18546**

PART 7

SOLICITATION OF FUNDS

Authorization to use candidate or committee name.

It is unlawful for any person who solicits funds for the purpose of supporting or promoting any candidates or committees to include in any part of its name the name of that candidate or committee unless that person shall have previously obtained the authorization of the candidate or committee or the candidate's or committee's designated agent to use the candidate's or committee's name in the name of that person.

Authorization by a candidate or committee shall not be construed as rendering the person soliciting funds a controlled committee as defined by Section 82016 of the Government Code. **E. C. § 20202**

Notice of non-authorization to be included in fundraising communication.

Any person who solicits or receives contributions on behalf of any candidate or committee for the purported and exclusive use of that committee or the candidate's election campaign and who is not authorized by the candidate or committee or the candidate's or committee's designated agent to do so, shall include a notice in any fundraising communication, whether through any broadcasting station, newspaper, magazine, printed literature, direct mailing, or any other type of general public advertising, or through telephone or individual oral fundraising appeal, clearly and conspicuously stating that the person is not authorized by the candidate or committee and that the candidate or committee is not responsible for the actions of that person.

E. C. § 20203

PART 8

**OUTDOOR ADVERTISING: POLITICAL SIGNS
(INCLUDING PLACARDS AND POSTERS)**

Outdoor Temporary Political Signs.

Nothing in this chapter, including, but not limited to, § 5405, shall prohibit the placing of temporary political signs, unless a federal agency determines that such placement would violate federal regulations. However, no such sign shall be placed within the right-of-way of any highway or within 660 feet of the edge of and visible from the right-of-way of a landscaped freeway.

A temporary political sign is a sign which:

- (a) Encourages a particular vote in a scheduled election.
- (b) Is placed not sooner than 90 days prior to the scheduled election and is removed within 10 days after that election.
- (c) Is no larger than 32 square feet.
- (d) Has had a statement of responsibility filed with the department certifying a person who will be responsible for removing the temporary political sign and who will reimburse the department for any cost incurred to remove it.

B. & P. Code § 5405.3

The State agency responsible for administering outdoor advertising laws including those for political signs is:

STATE OFFICE

**DEPARTMENT OF TRANSPORTATION
TRAFFIC OPERATIONS
OUTDOOR ADVERTISING PROGRAM
P.O. BOX 942874, MS-36
SACRAMENTO, CA 94274-0001
TDD 1-800-735-2929
PHONE (916) 654-6413
FAX (916) 651-9359**

DISTRICT OFFICE

**DEPARTMENT OF TRANSPORTATION
DIVISION OF TRAFFIC OPERATIONS
OUTDOOR ADVERTISING PROGRAM
464 W. 4TH STREET, MS-M
SAN BERNARDINO, CA 92401-1400
PHONE (909) 383-6205
FAX (909) 383-6877**

GENERAL CAMPAIGN INFORMATION (Cont'd)

A Statement of Responsibility must be submitted to the appropriate Department of Transportation district office according to the county location of the temporary political sign(s). The forms may be obtained by contacting a department listed on page 21 or from the:

**REGISTRAR-RECORDER/COUNTY CLERK
CAMPAIGN FINANCE DISCLOSURE SECTION ROOM 2003
12400 IMPERIAL HIGHWAY
NORWALK, CALIFORNIA 90650
Telephone (562) 462-2339**

Placement of Signs in Unincorporated Areas

The Outdoor Advertising Act prohibits placement of any temporary political signs on interstate highways, public or primary highways, and streets in unincorporated areas of the state, including Los Angeles County. This includes telephone poles, street signs, utility poles, street medians, sidewalks, bus stop benches and bus shelters located on the above highways and streets. (Please see B & P Code § 5215 and § 5220 for definitions of various highways.) The County Code provisions also prohibit the placement of temporary political signs on private property in the unincorporated areas without the consent of the owner or occupant.

Note: In some instances, **city ordinances** also regulate the placement and removal of temporary political signs. Please check with the city clerk or police department of a city before placing such signs within its boundaries.

PART 9

POLITICAL MAILINGS

IMPORTANT NOTICE TO CANDIDATES WHO PLAN TO MAIL CAMPAIGN MATERIALS

The U.S. Postal Service can provide assistance for mailing requirements to political candidates and committees. Business Mail Entry Units will explain addressing, sorting, fees and postage. Additionally, they will also review a mailing piece to ensure mailability.

To avoid delays and other delivery problems in your campaign mailings, call the U.S. Postal Service:

ZIP CODE AREAS SERVED	LOCATION OF OFFICE	OFFICE TELEPHONE NUMBER
900XX	LOS ANGELES CITY	(323) 586-2605
902XX – 908XX	LONG BEACH DIST.	(714) 662-6248 OPTION #4
910XX – 935XX	VAN NUYS DIST.	(661) 775-6663
917XX – 918XX 926XX – 928	SANTA ANA DIST.	(714) 662-6248 OPTION #4

PART 10

**INFORMATION FOR INDIVIDUALS, GROUPS AND ORGANIZATIONS
DISTRIBUTING APPLICATIONS FOR VOTE BY MAIL BALLOTS**

VOTE BY MAIL BALLOT APPLICATION

(a) Before you do anything else, contact your local elections official.

The local elections official can assist you in your vote by mail voter drive. He or she can provide information to ensure that your application format is correct, as well as other important details. Failure to make early contact with the elections official could result in delays or problems which might interfere with your intended goal of enabling people to vote by mail.

If you need assistance or have any further questions concerning use of the vote by mail voter application form, please call Mr. Steve Logan, Head, Document Receipt and Vote by Mail Voting Section at (562) 462-2381.

(b) Uniform Vote By Mail Voting Application

Pursuant to Elections Code § 3007, the Secretary of State has prepared a uniform application format for a vote by mail voter's ballot for use by all individuals, organizations and groups distributing vote by mail voter applications. Failure to conform your applications to the uniform format is a misdemeanor. **E. C. § 18402**

(c) Important Vote By Mail Ballot Application Information

Some of the important points you need to be aware of in your effort to distribute applications for vote by mail ballots include:

- (1) In order to ensure accuracy, the voter should fill out all the information on the application himself or herself. The law does, however, permit the following information to be preprinted on the application form prior to distribution to the voter:
 - (a) The voter's name and residence address as they appear on the voter's affidavit of registration.
 - (b) The name and date of the election for which the vote by mail ballot is being requested.
 - (c) The deadline date by which the application must be received by the elections official.

GENERAL CAMPAIGN INFORMATION (Cont'd)

- (2) There is a separate section of the form for the voter to indicate a "mailing address" if he or she receives mail at an address other than his or her residence address. This section of the form may **only** be completed by the voter (**mailing address information may not be printed by the person, group or organization distributing the applications**).
- (3) The voter must personally affix his or her signature.
- (4) The mailing address to which a vote by mail ballot is requested to be sent may not be the address of any political party, political campaign headquarters, or a candidate's residence. This provision, of course, does not apply to the candidate or the candidate's immediate family members or housemates who requests that a vote by mail ballot be mailed to the candidate's residence address.
- (5) Any application containing preprinted information shall contain the following statement (verbatim):

You have the legal right to mail or deliver this application directly to the local elections official of the county where you reside.

This statement must be conspicuously printed on the application form.

- (6) The name, address and telephone number of any organization, individual or group which authorizes the distribution of applications shall be printed on the application.
- (7) Any individual, organization or group that distributes applications for vote by mail voter ballots and receives completed application forms back from voters shall deliver the forms to the appropriate elections official **within 72 hours** of receiving the completed forms. Note that Elections Code § 18576 makes it a misdemeanor to delay the proper return of a vote by mail voter application.
- (8) Any application for a vote by mail voter's ballot which is sent by a group or organization to a voter shall be sent by non-forwardable mail.
- (9) Any individual, group or organization that knowingly distributes any application for a vote by mail voter's ballot which does not conform to the requirements of the vote by mail voter provision is guilty of a misdemeanor. **E. C. § 18402**
- (10) Voters who use the vote by mail ballot applications provided by individuals, groups and organizations must attest to the truth and correctness of the contents of the application and sign the application under penalty of perjury.
- (11) The vote by mail ballot application must contain information about California's permanent vote by mail voter provision. **E. C. § 3006**

(d) Vote By Mail Ballot Application Format

All individuals, groups and organizations distributing vote by mail ballot applications must use the standard format approved by the Secretary of State. **E. C. § 3007**

NOVEMBER 4, 2008 GENERAL ELECTION
APPLICATION FOR A VOTE BY MAIL BALLOT

To request a vote by mail ballot, complete the information on this form. This Application Form must be received by the Elections official no later than **October 28, 2008**.

FOR OFFICIAL USE ONLY

NOTICE – You have the legal right to mail this form to:

Registrar-Recorder/County Clerk
Vote By Mail Voters Section
P. O. Box 30450,
Los Angeles, CA 90030-0450

Or deliver to:

12400 Imperial Hwy.
Norwalk, CA 90650
3rd Floor Room 3002
8am – 5pm
(562) 466-1323
FAX: (562) 462-3035

Any Voter wishing to become a Permanent Vote By Mail Voter can call our Office at: **(562) 462-1323** for further information

Returning this application to anyone else may cause a delay that could interfere with your right or ability to vote.

The format used on this application **MUST** be used by ALL individuals, organizations, and groups that distribute vote by mail ballot applications. Failure to conform to this format may result in criminal prosecution. Election Code Sections 3007 & 18402

Under Federal law, election materials are available in other languages in

1. **PRINT NAME:**

2. **DATE OF BIRTH:**

First Name

Middle Name or Initial

Last Name

3. **RESIDENCE ADDRESS** (please print):

Number and Street - as registered (P.O. Box, Rural Route, etc. not acceptable)

(Designate N,S,E,W. if used)

City

County

Zip Code

4. **TELEPHONE NUMBER:** () (Optional)

Daytime

()

Evening

5. **MAILING ADDRESS FOR BALLOT, IF DIFFERENT FROM ABOVE. (PLEASE PRINT)**

NOTE: ORGANIZATIONS DISTRIBUTING THIS FORM MAY NOT PREPRINT MAILING ADDRESS INFORMATION.

Number and Street/P.O. Box (Designate N,S,E,W. if used)

City

U.S. State or Foreign Country

Zip Code

6. THIS APPLICATION FORM WILL NOT BE ACCEPTED WITHOUT THE PROPER SIGNATURE OF THE APPLICANT

I have not applied for, nor do I intend to apply for, a vote by mail ballot from any other jurisdiction for this election. I certify under penalty of perjury under the laws of the State of California that the name, residence address and information I have provided on this application are true and correct.

SIGNATURE

Date

WARNING: Perjury is punishable by imprisonment in state prison for two, three or four years. (Section 126 of the California Penal Code)

7. **THIS FORM IS PROVIDED BY:**

IMPORTANT: ORGANIZATIONS PROVIDING THIS FORM MUST ENTER THEIR NAME, ADDRESS AND TELEPHONE NUMBER

AVAPP5/2004

NOTE: The Postal Service will not process vote by mail voter applications prepared by a committee which contains a postage pre-paid permit if it is addressed to the Registrar-Recorder/County Clerk's Office even though the committee uses their own permit number.

If the applications are addressed directly from a computer file of registered voters, please include the voter identification number (9 digits) with the names and street addresses of the voters.

If bar coding or OCR font of the voter identification number is used, submit samples to this office for testing.

GENERAL CAMPAIGN INFORMATION (Cont'd)

PENALTIES FOR FRAUDULENT VOTE BY MAIL VOTING

(a) Voting more than once.

It is a crime to vote more than once in any election. **E. C. § 18560**

(b) Interfering with the vote by mail voting process.

It is a misdemeanor to willfully interfere with the prompt delivery to the elections official of a completed application for a vote by mail ballot. **E. C. § 18576**

A third party may not (without the voter's authorization) retain a completed application for a vote by mail ballot for more than 36 hours (excluding weekends and holidays) or beyond the deadline for applying, whichever is earlier. **E. C. § 18576**

No one can deny a voter the right to return his or her application for a vote by mail ballot to the elections official. **E. C. § 18576**

It is a crime to interfere with the prompt return of a voted vote by mail ballot or to vote or attempt to vote a fraudulent vote by mail ballot. **E. C. §§ 18577 & 18578**

It is a misdemeanor to do any electioneering, or otherwise attempt to influence a voter, at the time he or she is voting a vote by mail ballot. **E. C. § 18371**

Vote by mail ballot return envelopes are signed under penalty of perjury, a violation of which can result in a prison term. **Penal Code § 126**

(c) Other penalties.

It is a crime to interfere with anyone's right to vote. **E. C. § 18502**

It is a crime to pay, or offer to pay, a person any amount of money or to give them anything of value in exchange their vote for a particular person or issue. Similarly, it is against the law to pay someone to not vote. **E. C. §§ 18521, 18522 & 18524**

It is a crime to violate the secrecy of the ballot, or otherwise tamper with ballots or the voting system. **E. C. §§ 18564 & 18565**

PART 11

INFORMATION ON FEDERAL LAW PROHIBITING FOREIGN NATIONALS FROM MAKING CONTRIBUTIONS OR EXPENDITURES

Federal law prohibits foreign nationals from making contributions or expenditures in connection with any U.S. election (federal, state, or local), either directly or through another person. This prohibition applies to foreign-owned corporations and associations, as well as to foreign governments, political parties and certain individuals and partnerships. Additionally, U.S. candidates for federal, state and local offices are prohibited from accepting contributions from these sources.

The ban on political contributions and expenditures by foreign nationals was first enacted in 1966 as part of the amendments to the Foreign Agents Registration Act (FARA), an "internal security" statute. The goal of the FARA was to minimize foreign intervention in U.S. elections by establishing a series of limitations on foreign nationals. These included registration requirements for the agents of foreign principals and general prohibition on political contributions by foreign nationals. In 1974, the prohibition was incorporated into the Federal Campaign Act which gave the Federal Election Commission (FEC) jurisdiction over its enforcement and interpretation.

If you have any questions on this matter, please call the FEC in Washington, D.C. at 800 424-9530 or (202) 219-3420.



COUNTY OF LOS ANGELES
REGISTRAR-RECORDER/COUNTY CLERK

12400 IMPERIAL HWY. – P.O. BOX 1024, NORWALK, CALIFORNIA 90651-1024 – www.lavote.net

DEAN C. LOGAN
 Registrar-Recorder/County Clerk

**Fee Schedule
 As Of 1/15/08**

Item	Fee
Boundary Maps - District Congressional, Senate, Assembly, Supervisorial and Board of Equalization	\$0.03 Per Map Plus \$0.75 Handling Fee Per Request.
Certified Copy - Affidavit Or Transcript	\$1.50 For Copy Of Own Registration. \$6.50 Per Copy For All Others (Public And Authorized).
Campaign Statement Copies	\$0.10 Per Page.
Certification Of Election Documents (Except Affidavits Of Registration)	\$1.75 Per Certified Copy.
I Registered To Vote Stickers	\$2.22 Per Each Batch Of 600 Labels <u>Plus</u> \$9.84 Handling Charge Per Order.
Precincting Book	\$34.00 Per Set.
Precinct Maps – 18" X 24" - Large 18" X 12" - Small	\$2.00 Per Map Page. (Handling Fee Included In Cost)
Precincting G I S Maps 3" X 3 ½"	\$30.00 Each
Polling Place Maps	\$17.00 Small 11" X 17" Each Page. \$26.00 Large – Each Page Varies In Size.
Photocopies (Miscellaneous)	\$0.46 Per Copy.
Returned Checks	\$33.00 Each
Search – Voter Registration File	\$5.00 Per Name For Each Year Of Records Searched.

Fee Schedule - cont'd
As Of 1/15/08

Item	Fee
Statement Of Votes Cast (Svc)	\$0.36 Per Page. (Handling Fee Included In Cost)
Telefaxing	\$0.04 Per Page Plus \$0.75 Handling Fee.
Customized Wall Maps	\$30.00 Each
Customized District Map With Acetate Overlay Map That Allows Distinction From Original Background Map.	\$48.00 Each
Video Tapes (Personnel Training)	\$10.00 Each
*Compact Disc (CD) Text File Los Angeles County Voter Files	\$146.00 Per File.
*Compact Disc (CD) Text File (Voter/Precinct/Election Information Files)	(Excluding Los Angeles County Voter Files) \$54.00 Per File \$39.00 For Each Additional File
*Index To Voter (Street Index)	Candidates/Committees: \$0.50 Per Thousand Names.
*Voted Index	\$0.10 Per Page Plus \$1.60 Handling Fee Per Request.
*Precinct Rosters (Combined Index-Roster)	\$5.50 Per Roster Or \$0.22 Per Page. (Handling Fee Included In Cost)
*Vote by Mail Voter Report	\$0.10 Per Page Plus \$1.60 Handling Fee Per Request.
**Precinct Map on Plotter Paper	\$11.00
**Precinct Maps on CD	\$16.00
**Precinct Maps on DVD	\$18.00
**Precinct/District Maps on 35 mm Microfilm	\$246.00
Shipping and Handling Fee for CD or DVD	\$6.00
*Applicant Is Required To Execute Contract With The Registrar-Recorder/County Clerk	
**Revised 1/15/08 (Additional items added)	

Chapter 4

MULTILINGUAL VOTING
SERVICES

MULTILINGUAL VOTING SERVICES

OVERVIEW OF MULTILINGUAL (ML) VOTER SERVICES PROGRAM

BACKGROUND

Public Law 102-344 extended the Voting Rights Act of 1965 (VRA) to federally mandate that Los Angeles County provide written and oral election assistance to limited-English, Chinese, Japanese, Korean, Spanish, Tagalog/Filipino and Vietnamese-speaking voters. In January 2000, the Department of Justice further directed this office to **transliterate** the names of candidates in those languages that do not use Roman Characters. (*Transliteration* is the process of reproducing phonetic sounds as closely as possible from one alphabet or writing system into another.) These languages include Chinese, Japanese and Korean.



TRANSLATION OF ELECTION MATERIALS

A language is considered to be covered by the Voting Rights Act (VRA) and thus mandatory for translation of election materials if 1) more than 5% of the citizens of voting age are members of a single language minority and are limited English proficient (LEP) or 2) more than 10, 000 of the citizens of voting age are members of a single language minority and are limited English proficient.

Although the VRA has established a 5% threshold for languages to be covered, Los Angeles County has set a 3% standard as established by the State Elections Code (§14201.) to provide minority language materials in every election. If the number of eligible voters for a specific language is higher or equal to the 3% criteria, that language qualifies for translation. Languages that fall under the 3% criteria do not qualify for translation. This criteria not only identifies the election district/city areas throughout the county with a cost-effective method of meeting the VRA requirements, but also helps minimize printing/translation costs for election jurisdictions. The six minority languages that are required by Federal mandates in Los Angeles County are Chinese, Japanese, Korean, Spanish, Tagalog/Filipino and Vietnamese.

IMPLICATIONS TO CANDIDATE COST

The County will automatically provide *translated sample ballot booklets* to voters who request it two weeks before the election and after they received the English Sample Ballot booklet. However, as noted in the *Candidate Statements* (see page 39 of Section 1) there is a cost for a Spanish translated candidate statement which appears in the English sample ballot booklet. This translation is optional and the candidate needs to make a request for this service and pay for it when he/she files candidate statements with the county elections official.

TRANSLITERATION OF CANDIDATE NAMES

For certain languages, this department will transliterate your name. Candidate names will be transliterated to Chinese, Japanese and Korean. Candidates will also be permitted to submit their own transliterations for each or all of these languages. A review period will be established to allow candidates to request changes prior to the translated sample ballot print deadline. Various minority community groups and news media assist this office by reviewing submitted transliterations to insure uniform name recognition within the community. Once transliterations are considered final, no further changes or submission of transliteration requests will be accepted after the review period. **There will be no exceptions.**

All candidates will be required to file a transliteration form (see next page) together with their nomination documents. Transliteration forms must be submitted no later than the last day to file nomination documents.

TRANSLITERATION REVIEW PERIOD

Candidates may review transliteration of their names. Requests for changes must be submitted to the county elections official only during the established review period. Timeframe: **E-62 through E-60** (subject to change). To review your transliterated name and obtain the schedule for the established review period, you may call (562) 462-2730.

MULTILINGUAL VOTER SERVICES

The ML Voter Services Program includes services such as:

- ◆ Bilingual Assistance Hotline (1-800) 481-8683.
- ◆ Translated election materials can be mailed to voters before every election, upon request.
- ◆ Bilingual assistance at targeted polling places.

Translated copies of the “ML Voter Services” brochure are available at the RR/CC Election Information counter, 2nd Floor Room 2013 and online at www.lavote.net. For further assistance please contact our Multilingual Services Section at (562) 462-2832.

TRANSLITERATION FORM

I, _____, Candidate for nomination to the office
of _____

to be voted for at the _____

agree as indicated below:

CHECK ONE:

I will accept the transliteration of my name provided by the Los Angeles County Registrar-Recorder/County Clerk in Chinese, Japanese and Korean.

OR

I am submitting transliteration(s) for the languages below. I will accept the transliteration of my name provided by the Los Angeles County Registrar-Recorder/County Clerk for any language not submitted.

Languages

Name Transliteration

Chinese:

Japanese:

Korean:

I am aware of the deadline to submit transliterations and review period. I understand that I may request changes to transliterations during the review period and that transliterations are considered final upon expiration of the deadline. I further understand that there will not be an extension of the review period.

Candidate's Signature

Date

Candidate Filing #:

Chapter 5

ELECTION DAY

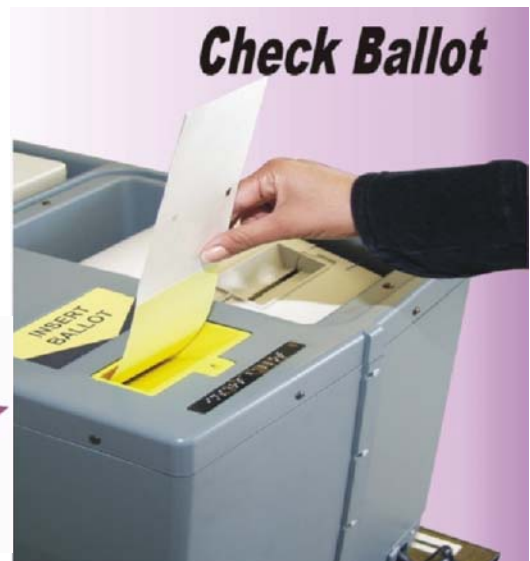
ELECTION DAY

ENHANCED VOTING SYSTEM – INKAVOTE PLUS

Los Angeles County voters will be using the InkaVote Plus voting system at all voting precincts on Election Day. InkaVote Plus enhances the existing InkaVote optical scan system to comply with new federal Help America Vote Act (HAVA) requirements. The enhanced system allows disabled voters, including those who are blind and visually impaired, to cast a ballot privately and independently using an audio headset. Additionally, the InkaVote Plus system will provide all voters with the opportunity to have their ballots reviewed for errors prior to casting their votes.



After using the inking device provided to mark the InkaVote ballot, the voter will insert the ballot into the ballot box through a new machine (as shown in picture). The machine will alert the voter if a mistake occurred - for example, if a voter *"overvoted"* in any one contest for more candidates than allowed. The voter may then receive a replacement ballot to correct the error.



HELP AMERICA VOTE ACT (HAVA) – UPDATE ON VOTER REGISTRATION

As of January 1, 2006, federal HAVA law requires every state to have a statewide voter registration database in place. As a result, in order to be listed on the California voter file, each person must provide a California Driver's License (CDL) number when registering or re-registering to vote. Persons who do not have a CDL may provide a California State Identification (ID) number issued by the State's Department of Motor Vehicles (DMV). Any person who does not have either a driver's license or State ID number must provide the last four digits of his/her social security number. All voter registration forms must then be cleared by the California Secretary of State (SOS) system (CalVoter) prior to the registration or re-registration becoming effective. Clearance by the SOS's CalVoter system involves matching information provided by the voter on the registration form against the DMV database or federal social security information to verify identity.

When assisting voters with the voter registration process, please ensure that they provide a CDL or State ID number on the form.

POLLING PLACES AND POLLWORKERS

Basic Information:

- ◆ Polling Place Hours: 7:00 a.m. until 8:00 p.m.
- ◆ There will be approximately 4379 polling places in the November 4, 2008 General Election.



Questions and Answers:

- Q.** *Can a candidate or a close relative of a candidate serve as a **pollworker** for the election in which he/she is running?*
- A.** No. This is not legally allowed.
- Q.** *Can a candidate host a **polling place** at his/her residence or office on Election Day?*
- A.** No. This is not legally allowed.

QUESTIONS AND ANSWERS: (Cont'd)

Q. *How can candidates get a list of **polling place** locations?*

A. Contact the Election Information Section at 1-800-481-VOTE (8683) (option 5) or (562) 466-1310. There is a small fee for this service. A small number of polling locations change after the sample ballots are mailed to voters. Voters are notified of polling place changes via a "polls change postcard." All polling locations are kept current on our website at www.lavote.net and are accessible for any voter to view by clicking on "Polling Place and Sample Ballot Look Up".

NOTE: Every person is guilty of a misdemeanor who knowingly causes to be mailed or distributed, or knowingly mails or distributes, literature to any voter that includes a designation of the voter's precinct polling place other than a precinct polling place listed for that voter in an official precinct polling list that constituted the latest official precinct polling list at sometime not more than 30 days prior to the mailing or distribution. **E. C. § 18302**

Q. *Why do **polling places** change?*

A. Despite best efforts to locate and secure long-term hosts for voting locations, an average of 8-10% of Los Angeles County polling places change between major elections. Facilities used in the past may not be available due to 1) location has another commitment on that date or is undergoing reconstruction; 2) precinct boundary lines were revised to comply with new legal requirements (for example, new state law became effective in 2006 reducing the maximum number of registered voters allowed per precinct from 1,250 to 1,000); 3) determination of non-accessibility to voters with disabilities; 4) complaints from voters regarding former voting location such as insufficient parking, lighting, etc.; and 5) different groupings of districts from one election to the next make it necessary to alter voting precinct boundary lines.

Q. *What do **pollworkers** do and how are they compensated?*

A. Pollworkers are civic-minded citizens who help to set up the voting locations (polls), assist voters when signing in, demonstrate how to use the voting system, issue ballots, etc. After the polls close, pollworkers are responsible for accounting for all the ballots, packing up election supplies and delivering ballots and supplies to a designated Check-in-Center.

Every poll has an Inspector who is in charge and several pollworker clerks depending on the number of registered voters in the precinct. Inspectors receive up to a \$175 stipend and clerks receive up to \$105.

To volunteer to serve as a pollworker, non-candidates
may call 1-800-815-2666 Option 7

QUESTIONS AND ANSWERS: (Cont'd)

Q. *Is it legal for high school students to serve as **pollworkers**?*

A. State law allows qualified high school students to serve as “student pollworkers” on Election Day. The Student Pollworker Program (SPP) is a great way to introduce young people to democracy in action and at the same time provide a valuable community service. Students who serve as regular members of a precinct board on Election Day, receive the \$80 pollworker stipend, plus a \$25 bonus if they attend a training class. Students must be U.S. citizens at least 16 years of age with a grade point average of 2.5.

Q. *Do you know any **bilingual voters** who might be willing to serve as a **pollworker**?*

A. The federal Voting Rights Act requires that **bilingual pollworkers** be hired in targeted polling places to provide oral assistance to limited-English proficiency voters. The RR/CC is currently recruiting Chinese, Japanese, Korean, Spanish, Tagalog/Filipino and Vietnamese-speaking pollworkers.

BILINGUAL POLLWORKERS

Bilingual pollworkers must be registered voters who speak English well enough to explain election procedures to English speaking voters. They must also understand English well enough to assimilate the difficult procedures taught in the training classes.

Bilingual pollworkers are vital in helping citizens with limited English proficiency to exercise their voting privileges. They assist voters, whose primary language is not English, and help them understand voting procedures by responding to their questions. As a means to address the bilingual pollworker recruitment challenges, a “Pollworker/Recruiter” Program, which brought community activists into recruiting bilingual pollworkers from their communities, was launched in 1998. In addition, to solve the general pollworker recruiting issues, Los Angeles County has developed the Student Pollworker and County Employee Pollworker Programs. The County has utilized these programs, in addition to the Pollworker/Recruiter Program, to address bilingual pollworker recruiting challenges. By working together, we can eliminate problems early.

BILINGUAL POLLWORKERS (Cont'd)

Los Angeles County employs a complicated four-part system to identify "targeted" polling places for oral assistance. This "targeting" system was negotiated over a two-year period with attorneys from Los Angeles County, the Department of Justice and community-based organizations. The four elements of the targeting system are:

- **Census Data.** This is simply a "Yes – Targeted" or "No – Not Targeted" designation per voting precinct. All Census Data targeted precincts are placed on a high targeted list.
- **Multilingual Requests on File.** This category reflects the number of voter requests for language assistance which are on the voter file for a given voting precinct. The standard for targeting is twenty or more requests for all six federally mandated languages: Chinese, Japanese, Korean, Spanish, Tagalog/Filipino and Vietnamese. Precincts with twenty or more such requests are placed on a (high) targeted list.
- **Input from Community Based Organizations.** If a community based organization indicates that a neighborhood should be targeted for a particular language due to community awareness of a high number of language minority voters in a specific language(s), the polling places in that immediate neighborhood are targeted for future elections and are placed on a secondary targeted list.
- **Multilingual Tally Card.** The "Multilingual Tally Card" is provided to each polling place for the poll workers to keep track of voters requesting language assistance. If more than five voters request language assistance in any language in a precinct not already targeted, such precincts are placed on a tertiary targeted list.

NEIGHBORHOOD VOTING CENTERS (NVCs)

In an effort to recruit and retain voting locations which are visible, stable, sizeable, and accessible for voters with disabilities and adaptable to more sophisticated voting technologies, the County is moving in the direction of centralized Election Day voting locations which can accommodate more than one precinct. (Current state law limits precinct size to a maximum of 1000.)

Between major elections approximately 8 to 10 percent of LA County polling places are replaced because the previous location is no longer available. The transition to NVCs will mean identifying and securing long-term partnerships with polling place hosts, which will help minimize voter confusion. Examples include government buildings, schools, recreation centers and community centers.

The County will continue to provide a variety of services to assist in directing voters to their correct poll including listing the poll address on the back of the voters' sample ballot, posting poll addresses on the County website and an automated phone system which can be accessed 24 hours a day. We continue to appreciate candidate assistance to voters in locating their correct poll address.

ELECTION DAY SERVICES FOR VOTERS WITH SPECIFIC NEEDS

Assistance in Voting. Under California law, any voter who needs help in casting a ballot is entitled to request assistance. A pollworker can provide assistance or the voter may select a person of his or her choice. If the voter is unable to mark the ballot, the voter may choose up to two people to help cast his/her vote. The assistants may not be the voter's employer, the employer's agent or the voter's labor union leader or agent.

Curbside Voting. Any voter who cannot reach the voting area at the polling place because of architectural barriers or physical limitations may request to vote "curbside" (outside of the polling location.) A pollworker will bring a ballot and marking device to the voter, assist the voter if necessary, and place the voter's ballot in the box.

Large Handle Pen. A special pen with a large ball for easy gripping is available at each polling place in Los Angeles County. This pen allows persons who are unable to grasp the regular pen to more easily mark the ballot card.

Voters with Vision Impairments. Each polling place displays voting instructions in large type. Magnifying devices are also available for voters who may have difficulty reading the ballot.

Wheelchair Accessible Voting Booths. Designated wheelchair accessible voting booths are available at every county poll location.



County of Los Angeles
REGISTRAR-RECORDER/COUNTY CLERK

A GUIDE FOR POLL WATCHERS



Poll watchers are persons interested in election proceedings who are entitled to observe polling place operations during voting hours. However, poll watchers may not disrupt the election process or interfere with a voter's right to cast a secret ballot. Poll watchers often represent candidates, political campaigns and/or organizations.

Pollworkers are appointed by the Registrar-Recorder/County Clerk and are responsible for all phases of the election that take place at the polls. They will comply with poll watchers' requests for voter information.

The following pages contain rules and procedures that all observers at the polling places must comply with at all times.

1. Vote counting activities at the polls and the tally center are open to public observation but no interference will be allowed during the proceedings. Interference with the election and canvass, or with a voter casting a ballot, is punishable by imprisonment in state prison for up to three years. **(E.C. § 18502)**

Only pollworkers have the right to challenge a person's eligibility to vote at the polls. A challenge may be made only upon sufficient probable cause. Pollworkers are instructed to report the presence of any persons or signs which may be intimidating to voters or cause interference with the voting process to the Registrar-Recorder/ County Clerk Department. **(E.C. §14240)**

The use of force, violence or tactic of coercion or intimidation to compel a person to refrain from voting at any election is a felony punishable by imprisonment in state prison. **(E.C. § 18540)**

2. Damaging or tampering with voting equipment or official election materials in a polling place is a felony, punishable by imprisonment for 2, 3, or 4 years. **(E.C. § 18564)**

3. Electioneering is not permitted within 100 feet of the polling place; that is, within 100 feet from the entrance or door to the room or rooms in which voters sign the roster and cast their ballots. Exit polling is permitted, however, no closer than 25 feet of polling places by news media or other organizations surveying voters as to how they voted. Media may come into a poll to film or interview voters, including voters in the booth, as long as the voter consents and there is no disruption to other voters or the voting process. **(E.C. § 18370 and A.G. Opinion)**

4. Only pollworkers can post signs within 100 feet of a polling place. Talking in loud voices, disruptive behavior which causes confusion or the congregating of excessive numbers of persons inside the polling place is not permitted. Onsite telephones or other facilities are not available for the use of poll watchers.

5. Wearing campaign badges or taking campaign material or literature into the polling place is not permitted.

6. Poll watchers may not sit at the official table. **(E.C. § 14223(a))**

A GUIDE FOR POLLWATCHERS (Cont'd)

7. The area between the official table and the voting booths is accessible to voters only and may not be designated as an observer post. **(E.C. § 14221)**
8. Indexes marked to indicate persons who have voted are posted for reference by the public. Signature rosters may be inspected at any time provided there is no interference with poll operations or delay or inconvenience to the voters. **(E.C. §§ 14202 & 14223(b))**
9. The American Flag must be prominently displayed (regardless of weather conditions) during all polling hours. **(E.C. § 14105(f))**
10. At the opening of the polls the ballot box must be opened, exhibited to be empty, closed and then shall remain locked until the last ballot is cast and the polls are closed. **(E.C. § 14215)**
11. If a polling place is inaccessible to a voter with a disability, the voter may vote a ballot outside the premises in an accessible area as near as possible to the polling place. **(E.C. § 14282(c))**
12. Voters may request and receive assistance in voting if they declare under oath that they are unable to mark their ballots. **(E.C. § 14282(a))**
13. A voting booth may not be occupied by more than one person at a time unless a person is assisting the voter as provided by law. **(E.C. §§ 14281, 14222 and 14224)**
14. Pollworkers may communicate with voters in a language other than English, but are permitted to do so only to provide election information or instructions. Special language assistants are permitted to help voters in the voting booth without a time limit. **(E.C. § 14227 and the Voting Rights Act, VRA)**
15. Smoking is not permitted inside the polling place.

Chapter 6

ELECTION RESULTS

ELECTION RESULTS/CANVASS/ ELECTION CONTESTS/RECOUNTS

Can I, as a Candidate, view all parts of the ballot counting process? Yes, the ballot counting process is open to public observation. If you wish to observe the process, you may go to the lobby, located on the 1st floor of the Norwalk headquarters, to check in and be provided with an observer's badge. Tours are available.

How Can I Get Results Election Night?

- **Web site:** Results are available on the Internet at www.lavote.net
- **Phone:** Live operators are also available by calling (562) 466-1323 from 8:30 p.m. and approximately every 20 minutes thereafter until all precincts have reported.
- **Norwalk Headquarters:** Hard copy bulletins are printed and distributed on the 3rd floor near the Tally / MTS room.

Are Election Night Results Final? No. California State law allows a specified period after the election for the completion of the official canvass. Results released on election night are considered semi-official.

POST ELECTION NIGHT RESULTS

Supplemental counts of outstanding ballots will be scheduled approximately 3 days after the election. This count is conducted to get the majority of these ballots counted at the beginning of the canvass process.

Outstanding ballots include:

- Vote by mail ballots turned in at the polls on election day,
- Write-in ballots, or
- Provisional ballots voted at polls and sealed in envelopes for further research.

Semi-official election results are updated following an add-on count. If a race is very close, the outcome may not be known until the canvass is complete.

CANVASS/CERTIFICATION

Canvass is a process of reconciling numbers and the supplemental counting of vote by mail ballots turned in at the polls, provisional and write-in ballots. The numbers of voted ballots reported by pollworkers and vote by mail ballots are matched to what the computer counted. California law permits 28 days to complete the final, official canvass and certify the results of the election. This provision of the law recognizes the complexity of completing the ballot count and conducting a thorough audit of the election results to ensure accuracy. Part of the canvass process is a legally required manual recount of the votes cast for all candidates and measures on the ballot in 1% of over 4300 voting precincts. This manual process verifies the accuracy of the computer count.

Candidates and members of the general public are invited to observe supplemental ballot counting and the manual tally of ballots from the randomly selected 1% of the voting precincts. After election night, the schedule of supplemental ballot counting will also be posted on the entrance door of our office in Norwalk.

STATEMENT OF VOTES CAST

The Semifinal Official Canvass Statement of Votes Cast (SVC) which reports election results by individual voting precincts is available the Thursday after the election at the elections office. For most elections, this report is also posted on the department's website. Once the election is certified, the Final Official Canvass Statement of Votes Cast is made available at our office and on the website.

ELECTION CONTEST

An election contest may involve a recount, but it is not the same as a requested recount. It is a court action and can be brought for a variety of reasons and at different times. For complete information, refer to the Elections Code Division 16, Election Contests.

DOCUMENT RETENTION

Certain precinct supplies and all voted ballots must be preserved for 22 months when a federal office is on the ballot and 6 months for all other elections. If no legal action is pending at the end of this period, the documents may be destroyed or recycled. Unused ballots may be destroyed or recycled after the election.

REQUESTING A RECOUNT

A recount is conducted by the elections official for the purpose of verifying the number of votes counted for any office or measure in an election. California Elections Code Division 15, Chapter 9, Sections 15620 through 15634 govern voter requested recounts.

WHO MAY REQUEST A RECOUNT?

Any voter of the state may file a request.

(E.C. § 15620)

Timing of Recount Request

The request must be filed within five (5) calendar days after the completion of the official canvass. The canvass is complete when the elections official signs the Certification of the Election Results.

(E.C. § 15620)

Exceptions: *For statewide contests, the request must be filed within five (5) calendar days beginning on the 29th day after the election.*

Format of request

- The request must be submitted in writing. **(E.C. § 15620)**
- Must specify the contest to be recounted. **(E.C. § 15620)**
- Must state on behalf of which candidate, slate of electors, or position on a measure (affirmative or negative) it is filed. **(E.C. § 15620)**
- May specify the order in which precincts shall be counted. **(E.C. § 15622)**
- May specify the method of counting to be used (computer, manual or both). **(E.C. § 15627)**
- May specify any other relevant material to be examined. **(E.C. § 15630)**
- For statewide contests, may specify in which county or counties the recount is sought. **(E.C. § 15621)**

Requesting a Recount (Cont'd)

Place of filing

- With the county elections official responsible for conducting the election, if the contest is not voted upon statewide. **(E.C. § 15620)**
- If election is conducted in more than one county, the request may be filed with the county elections official of, and the recount conducted within, any or all of the affected counties. **(E.C. § 15620)**
- With the Secretary of State if the contest is voted upon statewide. **(E.C. § 15621)**
- With the City Clerk if it is a city election (or if the city has not consolidated with the county). **(E.C. § 15620)**

Notice of recount

A notice stating the date and place of the recount will be posted by the elections official at least one day prior to the recount and the following persons will be notified in person or by telegram:

- All candidates for the office being recounted.
- Authorized representatives for presidential candidates, if the race for presidential delegates is to be recounted.
- Proponents of any initiative or referendum or persons filing ballot arguments for or against any initiative, referendum or measure to be recounted.
- Secretary of State if the recount is for candidates for any state or federal office, delegates to a national convention, or any state measure. **(E.C. § 15628)**

Requesting a Recount (Cont'd)

Process of recount

- The recount is open to the public. **(E.C. § 15629)**
- Recount shall start no later than seven calendar days following the receipt of the request by the elections official and shall be continued daily except for Saturdays, Sundays, and holidays, for not less than six hours each day until completed. **(E.C. § 15626)**
- A manual recount must be conducted under the supervision of the elections official by recount boards, consisting of four voters of the county, appointed by the elections official. **(E.C. § 15625)**

Result of Recount

- The results of a recount are declared null and void unless every vote in which the contest appeared is recounted. **(E.C. § 15632)**
- Upon completion of a recount, if a different candidate, slate of electors, or position on a measure receives a plurality of votes, the results of the official canvass will be changed and the election results re-certified. **(E.C. § 15632)**
- A copy of the results of any recount conducted shall be posted conspicuously in the office of the elections official. **(E.C. § 15633)**

Cost and payment

- The elections official shall determine the amount of deposit necessary to cover costs of the recount for each day. **(E.C. § 15624)**
- The voter filing the request for recount must deposit, before the recount commences and at the beginning of each day following, such sums as required by the elections official to cover the cost of the recount for that day. **(E.C. § 15624)**
- If upon completion of the recount the results are reversed, the deposit shall be returned. **(E.C. § 15624)**

Requesting a Recount (Cont'd)

COST BREAKDOWN FOR MANUAL TALLY*	
No. of Boards	Cost per Day
1	\$3,254
2	\$5,211
3	\$7,168
4	\$9,125
5	\$12,378
6	\$14,335
7	\$16,293
8	\$18,250
9	\$21,503
10	\$23,460
11	\$25,417
12	\$27,375

*Subject to change. Cost will include labor, equipment, material and personnel. If computer recount is requested costs vary.

02/08

AUTOMATIC PUBLIC MANUAL TALLY

By law, a random sample of ballots from every election must be recounted manually to verify the computer count. A minimum of all votes cast in one percent (1%) of the precincts is included in this process. *The Automatic Manual Recount is open to the public.* **(E.C. § 15360)**

Chapter 7

FAQ'S

FREQUENTLY ASKED QUESTIONS

Q. How may I apply for office?

A. You may visit the Election Information Section located on the 2nd Floor, room 2013 or by calling (562) 466-1310 for information on the offices up for election, qualifications, filing dates, and to determine if you are eligible to run for office. You may also visit the Department's website at www.lavote.net.

Q. May I have someone pickup my paperwork?

A. Yes, however a letter of authorization signed by the candidate is required. The letter should include the candidate's name, office, residence address, publication address if any, telephone/email number(s); the name of the authorized person(s) that will be responsible for picking up and filing the candidate's nomination documents.

Q. What is a Candidate Statement?

A. A brief description of a candidate's education and qualifications to be included in the sample ballot and mailed to voters within an election jurisdiction. A candidate statement is **optional**. A candidate statement form is provided for this purpose along with instructions, provisions, and word limit and counting guidelines. The candidate statement fees and word limit applicable to the district will be provided.

Q. What is a Campaign Statement?

A. Specific campaign finance disclosure forms are required to report election campaign contribution and expenditure activities.

Q. What are the office hours to obtain nomination documents, and how long will it take to complete documents?

A. Election Information Section will be open between 8:00 a.m. and 5:00 p.m., Monday through Friday, except on holidays. It is recommended that individuals who wish to take out nomination documents arrive at least 15 minutes before 5:00 p.m. if possible to avoid delays (heavy lobby, stair well and elevator traffic) especially on the **deadline** to file nomination documents **(8/08/08)**. The time frame to process candidates varies, and depends on how efficiently the staff qualifies the candidate and how accurately the candidate completes required documents.

Q. Will I be able to obtain up-to-date filing information?

A. Yes. You may obtain a list of the candidates who have been issued and have filed nomination documents from the Election Information Section, 2nd Floor in Room 2013 or via our website at www.lavote.net.

FREQUENTLY ASKED QUESTIONS (Continued)

Q. Can a candidate change his/her mind about running for office after filing nomination documents?

A. A candidate whose declaration of candidacy has been filed for any election may not withdraw as a candidate after the filing deadline.

Q. Is it possible to correct the wording or spelling on a candidate statement after submission?

A. No. The statement may be withdrawn, but not changed, during the period for filing nomination documents. This means that you will be required to submit a signed written statement to withdraw your original statement then file a new statement during the nomination filing period. If you wish to withdraw your statement and not submit a new statement, you have until 5:00 p.m. of the next working day after the close of the nomination period. After this period, your statement cannot be withdrawn. **(E.C. § 13307(3))**

Please review your candidate statement carefully for proper grammar and format before submitting. Any voter of the jurisdiction in which the election is being held, or the election official may file a writ of mandate or an injunction to require any or all of the data/materials to be amended or deleted during the 10-day Public Examination Period. However, if the nomination period is extended for a particular office, the examination period for that office shall be adjusted.

(E.C. § 13313(b))

Q. Can a credit card be used to pay a candidate statement fee, or purchase voter material?

A. No. Cash, money orders, cashier's or personal checks are the only acceptable forms of payment. Checks for candidate statements (unless otherwise specified) are to be made payable to the Registrar-Recorder/County Clerk's Office.

Q. How soon will a list of qualified candidates be available after the close of the nomination (candidate filing) period?

A. This office will publish a tentative list, as well as a final list of candidates, daily on the internet and on hardcopy reports. Hardcopy reports will be available in the Election Information Section on the 2nd Floor, Room 2013.

Q. If a contest does not appear on the ballot due to an insufficient number of candidates, can a candidate statement fee be refunded?

A. Yes. A candidate statement fee can be refunded.

Q. How do I get election night results for Los Angeles County?

A. For local election results, we recommend using our website, www.lavote.net, or Secretary of State's website, www.ss.ca.gov for statewide results - results are updated approximately every 20 minutes. You are also welcome to come to the Tally Center which is open for public observation, please call (562) 462-2665 to make a reservation.

2008

JANUARY

S	M	T	W	Th	F	S
		1	2	3	4	5
6	7	8	9	10	11	12
13	14	15	16	17	18	19
20	21	22	23	24	25	26
27	28	29	30	31		

FEBRUARY

S	M	T	W	Th	F	S
					1	2
3	4	5	6	7	8	9
10	11	12	13	14	15	16
17	18	19	20	21	22	23
24	25	26	27	28	29	

MARCH

S	M	T	W	Th	F	S
						1
2	3	4	5	6	7	8
9	10	11	12	13	14	15
16	17	18	19	20	21	22
23	24	25	26	27	28	29
30	31					

APRIL

S	M	T	W	Th	F	S
		1	2	3	4	5
6	7	8	9	10	11	12
13	14	15	17	18	19	19
20	21	22	23	24	25	26
27	28	29	30			

MAY

S	M	T	W	Th	F	S
				1	2	3
4	5	6	7	8	9	10
11	12	13	14	15	16	17
18	19	20	21	22	23	24
25	26	27	28	29	30	31

JUNE

S	M	T	W	Th	F	S
1	2	3	4	5	6	7
8	9	10	11	12	13	14
15	16	17	18	19	20	21
22	23	24	25	26	27	28
29	30					

JULY

S	M	T	W	Th	F	S
		1	2	3	4	5
6	7	8	9	10	11	12
13	14	15	16	17	18	19
20	21	22	23	24	25	26
27	28	29	30	31		

AUGUST

S	M	T	W	Th	F	S
					1	2
3	4	5	6	7	8	9
11	12	13	14	15	16	17
18	19	20	21	22	23	24
25	26	27	28	29	30	31

SEPTEMBER

S	M	T	W	Th	F	S
	1	2	3	4	5	6
7	8	9	10	11	12	13
14	15	16	17	18	19	20
21	22	23	24	25	26	27
28	29	30				

OCTOBER

S	M	T	W	Th	F	S
			1	2	3	4
5	6	7	8	9	10	11
12	13	14	15	16	17	18
19	20	21	22	23	24	25
26	27	28	29	30	31	

NOVEMBER

S	M	T	W	Th	F	S
						1
2	3	4	5	6	7	8
9	10	11	12	13	14	15
16	17	18	19	20	21	22
23	24	25	26	27	28	29
30						

DECEMBER

S	M	T	W	Th	F	S
	1	2	3	4	5	6
7	8	9	10	11	12	13
14	15	16	17	18	19	20
21	22	23	24	25	26	27
28	29	30	31			